

Anti-CXCL13/BLC Picoband Antibody
Catalog # ABO12684**Specification**

Anti-CXCL13/BLC Picoband Antibody - Product Information

Application	WB, IHC-P, E
Primary Accession	O55038
Host	Rabbit
Reactivity	Mouse
Clonality	Polyclonal
Format	Lyophilized

Description

Rabbit IgG polyclonal antibody for C-X-C motif chemokine 13(CXCL13) detection. Tested with WB, IHC-P, ELISA in Mouse.

Reconstitution

Add 0.2ml of distilled water will yield a concentration of 500ug/ml.

Anti-CXCL13/BLC Picoband Antibody - Additional Information

Gene ID 55985

Other Names

C-X-C motif chemokine 13, B lymphocyte chemoattractant, CXC chemokine BLC, Small-inducible cytokine B13, Cxcl13, Blc, Scyb13

Calculated MW

11927 MW KDa

Application Details

Immunohistochemistry(Paraffin-embedded Section), 0.5-1 µg/ml, Mouse, By Heat

ELISA , 0.1-0.5 µg/ml, Mouse, -
Western blot, 0.1-0.5 µg/ml, Mouse

Subcellular Localization

Secreted.

Tissue Specificity

Found in spleen (B-cell-rich zone or follicles), Peyer patches (strongest within germinal centers and extending to the mantle zone) and lymph nodes (in reticular pattern in follicles).

Protein Name

C-X-C motif chemokine 13

Contents

Each vial contains 5mg BSA, 0.9mg NaCl, 0.2mg Na₂HPO₄, 0.05mg NaN₃.

Immunogen

E. coli-derived mouse BCA1 recombinant protein (Position: I22-A109). Mouse BCA1 shares 45.3% amino acid (aa) sequence identity with human BCA1.

Purification

Immunogen affinity purified.

Cross Reactivity

No cross reactivity with other proteins

Storage

At -20°C for one year. After reconstitution, at 4°C for one month. It can also be aliquotted and stored frozen at -20°C for a longer time. Avoid repeated freezing and thawing.

Anti-CXCL13/BLC Picoband Antibody - Protein Information

Name Cxcl13

Synonyms Blc, Scyb13

Function

Strongly chemotactic for B-lymphocytes, weakly for spleen monocytes and macrophages but no chemotactic activity for granulocytes. Binds to BLR1/CXCR5. May play a role in directing the migration of B- lymphocytes to follicles in secondary lymphoid organs.

Cellular Location

Secreted.

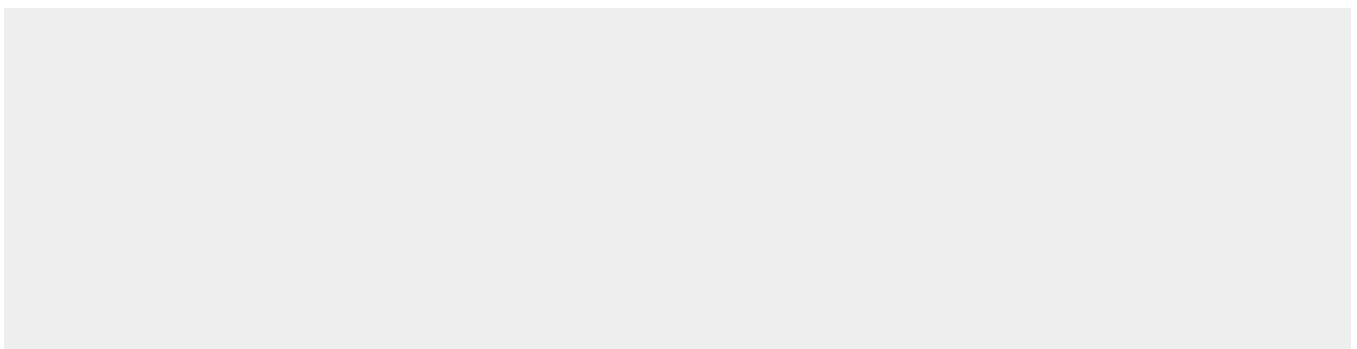
Tissue Location

Found in spleen (B-cell-rich zone or follicles), Peyer patches (strongest within germinal centers and extending to the mantle zone) and lymph nodes (in reticular pattern in follicles)

Anti-CXCL13/BLC Picoband Antibody - Protocols

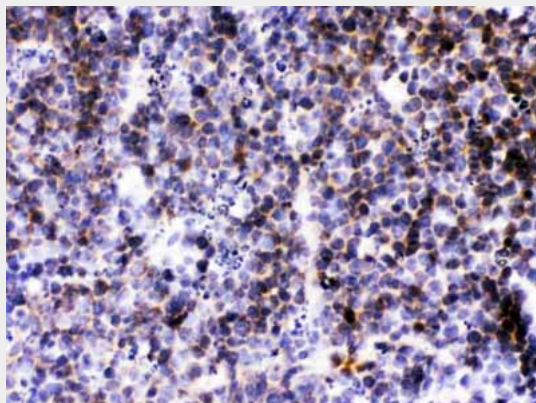
Provided below are standard protocols that you may find useful for product applications.

- [Western Blot](#)
- [Blocking Peptides](#)
- [Dot Blot](#)
- [Immunohistochemistry](#)
- [Immunofluorescence](#)
- [Immunoprecipitation](#)
- [Flow Cytometry](#)
- [Cell Culture](#)

Anti-CXCL13/BLC Picoband Antibody - Images



Western blot analysis of CXCL13/BLC expression in recombinant mouse CXCL13/BLC protein 1ng (lane 1). CXCL13/BLC at 13KD was detected using rabbit anti- CXCL13/BLC Antigen Affinity purified polyclonal antibody (Catalog # ABO12684) at 0.5 µg/mL. The blot was developed using chemiluminescence (ECL) method .



CXCL13/BLC was detected in paraffin-embedded sections of mouse lymphaden tissues using rabbit anti- CXCL13/BLC Antigen Affinity purified polyclonal antibody (Catalog # ABO12684) at 1 µg/mL. The immunohistochemical section was developed using SABC method .

Anti-CXCL13/BLC Picoband Antibody - Background

C-X-C motif chemokine 13 (CXCL13), also known as B cell-attracting chemokine 1 (BCA-1), is a protein that in humans is encoded by the CXCL13 gene. CXCL13 is a small cytokine belonging to the CXC chemokine family. Its gene is mapped to human chromosome 4 in a cluster of other CXC chemokines. This protein has contained 109 amino acids. It is expressed highly in the liver, spleen, lymph nodes and gut of humans. The protein induces chemotaxis of BLR1-expressing B cells.