

**Anti-Growth Hormone/GH1 Antibody**  
**Catalog # ABO12692****Specification**

---

**Anti-Growth Hormone/GH1 Antibody - Product Information**

Application	WB, IHC-P, E
Primary Accession	<a href="#">P01244</a>
Host	Rabbit
Reactivity	Rat
Clonality	Polyclonal
Format	Lyophilized

**Description**

Rabbit IgG polyclonal antibody for Somatotropin(GH1) detection. Tested with WB, IHC-P, ELISA in Rat.

**Reconstitution**

Add 0.2ml of distilled water will yield a concentration of 500ug/ml.

**Anti-Growth Hormone/GH1 Antibody - Additional Information**

**Gene ID** 24391

**Other Names**

Somatotropin, Growth hormone, Gh1, Gh

**Calculated MW**

24656 MW KDa

**Application Details**

Immunohistochemistry(Paraffin-embedded Section), 0.5-1 µg/ml, Rat, By Heat  
ELISA , 0.1-0.5 µg/ml, Rat, -  
Western blot, 0.1-0.5 µg/ml, Rat

**Subcellular Localization**

Secreted.

**Protein Name**

Somatotropin

**Contents**

Each vial contains 0.9mg NaCl, 0.2mg Na<sub>2</sub>HPO<sub>4</sub>, 0.05mg NaN<sub>3</sub>. Carrier free (No BSA) form available in stock. If you want this antibody carrier free please specify "Carrier Free" or "No BSA" in your order note. "

**Immunogen**

E. coli-derived rat GH recombinant protein(Position: F27-F216).

**Purification**

Immunogen affinity purified.

**Cross Reactivity**

No cross reactivity with other proteins

**Storage**

**At -20°C for one year. After reconstitution, at 4°C for one month. It can also be aliquotted and stored frozen at -20°C for a longer time. Avoid repeated freezing and thawing.**

**Anti-Growth Hormone/GH1 Antibody - Protein Information**

**Name** Gh1

**Synonyms** Gh

**Function**

Plays an important role in growth control. Its major role in stimulating body growth is to stimulate the liver and other tissues to secrete IGF1. It stimulates both the differentiation and proliferation of myoblasts. It also stimulates amino acid uptake and protein synthesis in muscle and other tissues.

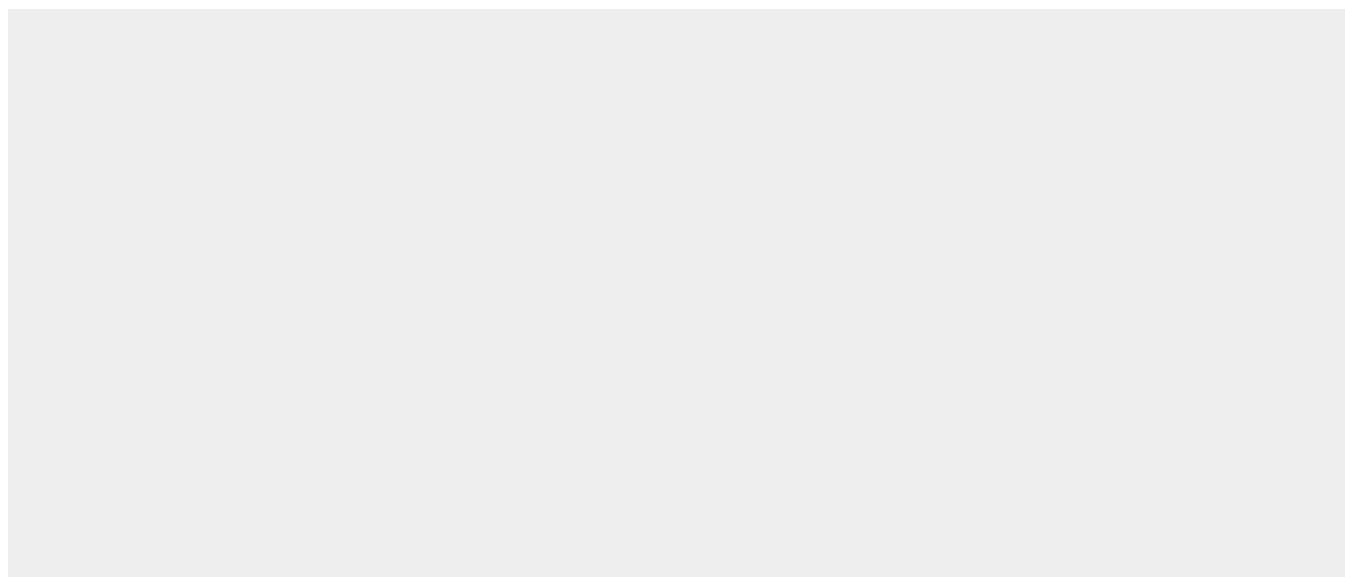
**Cellular Location**

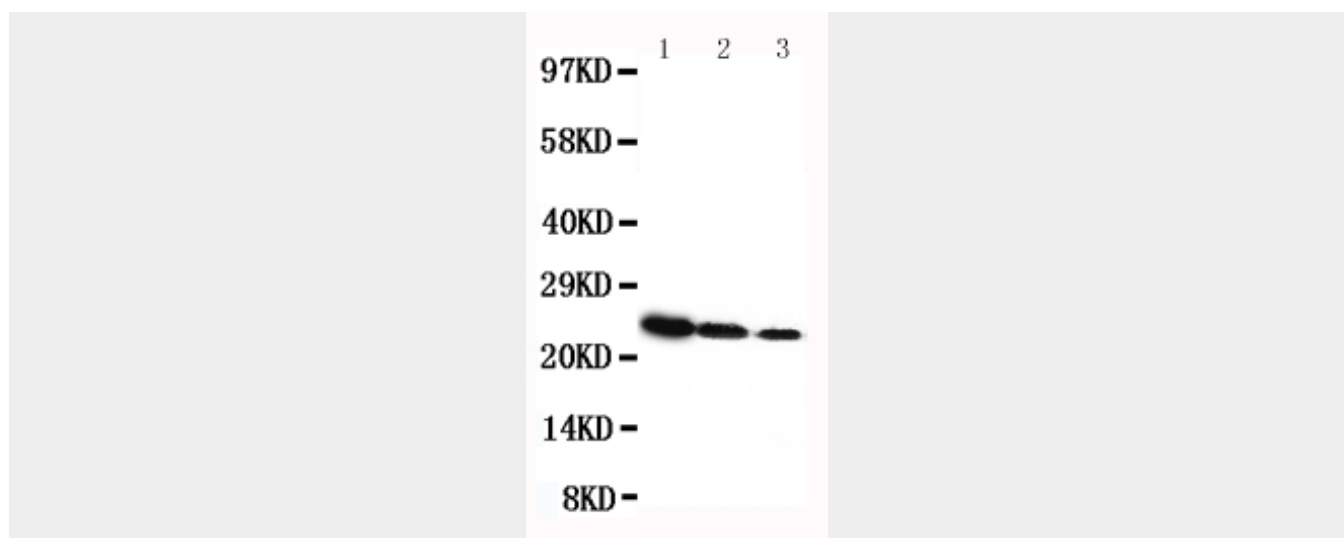
Secreted.

**Anti-Growth Hormone/GH1 Antibody - Protocols**

Provided below are standard protocols that you may find useful for product applications.

- [Western Blot](#)
- [Blocking Peptides](#)
- [Dot Blot](#)
- [Immunohistochemistry](#)
- [Immunofluorescence](#)
- [Immunoprecipitation](#)
- [Flow Cytometry](#)
- [Cell Culture](#)

**Anti-Growth Hormone/GH1 Antibody - Images**



Anti-rat Growth Hormone antibody, ABO12692, Western blotting  
Lane 1: Recombinant Rat GH Protein 10ng  
Lane 2: Recombinant Rat GH Protein 5ng  
Lane 3: Recombinant Rat GH Protein 2

### Anti-Growth Hormone/GH1 Antibody - Background

Growth Hormone(GH) is mapped to 17q22-q24. Human growth hormone has a molecular mass of 22,005 and contains 191 amino acid residues with 2 disulfide bridges. Rat GH shares 98% amino acid sequence homology with mouse. It binds two receptor molecules and thereby induces signal transduction through receptor dimerization. At high concentrations, GH acts as an antagonist because of a large difference in affinities at the respective binding sites.