

Anti-IL-7 Antibody
Catalog # ABO12698**Specification**

Anti-IL-7 Antibody - Product Information

Application	WB, E
Primary Accession	P13232
Host	Rabbit
Reactivity	Human
Clonality	Polyclonal
Format	Lyophilized

Description

Rabbit IgG polyclonal antibody for Interleukin-7(IL7) detection. Tested with WB, ELISA in Human.

Reconstitution

Add 0.2ml of distilled water will yield a concentration of 500ug/ml.

Anti-IL-7 Antibody - Additional Information

Gene ID 3574

Other Names

Interleukin-7, IL-7, IL7

Calculated MW

20187 MW KDa

Application Details

Western blot, 0.1-0.5 µg/ml, Human, -
ELISA , 0.1-0.5 µg/ml, Human

Subcellular Localization

Secreted.

Protein Name

Interleukin-7(IL-7)

Contents

Each vial contains 0.9mg NaCl, 0.2mg Na₂HPO₄, 0.05mg NaN₃. Carrier free (No BSA) form available in stock. If you want this antibody carrier free please specify "Carrier Free" or "No BSA" in your order note. "

Immunogen

E. coli-derived human IL-7 recombinant protein(Position: D26-H177).

Purification

Immunogen affinity purified.

Cross Reactivity

No cross reactivity with other proteins

Storage

At -20°C for one year. After reconstitution, at 4°C for one month. It can also be aliquotted and stored frozen at -20°C for a longer time. Avoid repeated freezing and thawing.

Sequence Similarities

Belongs to the IL-7/IL-9 family.

Anti-IL-7 Antibody - Protein Information**Name** IL7**Function**

Hematopoietic cytokine that plays an essential role in the development, expansion, and survival of naive and memory T-cells and B- cells thereby regulating the number of mature lymphocytes and maintaining lymphoid homeostasis (PubMed: [25870237](http://www.uniprot.org/citations/25870237), PubMed: [7527823](http://www.uniprot.org/citations/7527823)). Mechanistically, exerts its biological effects through a receptor composed of IL7RA subunit and the cytokine receptor common subunit gamma/CSF2RG (PubMed: [8128231](http://www.uniprot.org/citations/8128231)). Binding to the receptor leads to activation of various kinases including JAK1 or JAK3 depending on the cell type and subsequently propagation of signals through activation of several downstream signaling pathways including the PI3K/Akt/mTOR or the JAK-STAT5 (PubMed: [18523275](http://www.uniprot.org/citations/18523275), PubMed: [20974963](http://www.uniprot.org/citations/20974963)).

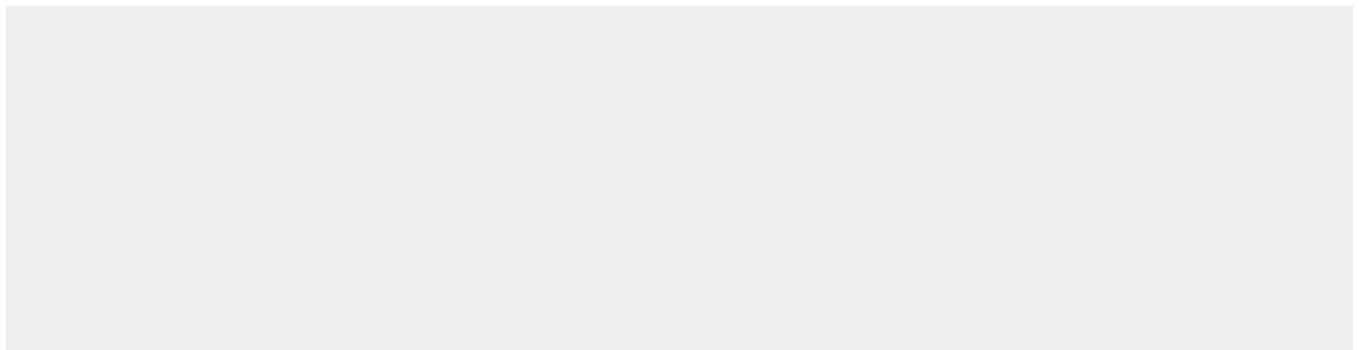
Cellular Location

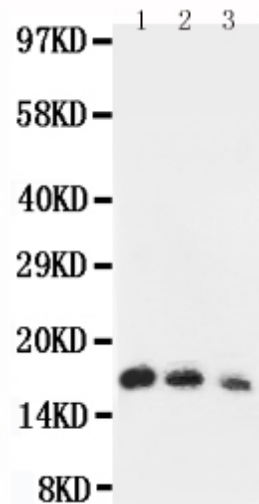
Secreted.

Anti-IL-7 Antibody - Protocols

Provided below are standard protocols that you may find useful for product applications.

- [Western Blot](#)
- [Blocking Peptides](#)
- [Dot Blot](#)
- [Immunohistochemistry](#)
- [Immunofluorescence](#)
- [Immunoprecipitation](#)
- [Flow Cytometry](#)
- [Cell Culture](#)

Anti-IL-7 Antibody - Images



Anti-human IL7 antibody, ABO12698, Western blotting Lane 1: Recombinant Human IL-7 Protein 10ng Lane 2: Recombinant Human IL-7 Protein 5ng Lane 3: Recombinant Human IL-7 Protein 2

Anti-IL-7 Antibody - Background

IL-7, Interleukin 7, is a protein that in humans is encoded by the IL-7 gene. IL-7 a hematopoietic growth factor secreted by stromal cells in the red marrow and thymus. It is also produced by keratinocytes, dendritic cells, hepatocytes, neurons, and epithelial cells but is not produced by lymphocytes. By the combination of approaches, IL-7 is located on 8q12-q13. IL-7 is critical for early T-cell development and homeostasis of naive and memory CD8-positive T cells. It signals through the IL-7 receptor complex, which consists of the IL7R-alpha chain and the common IL2R-gamma chain is critical for early T-cell development and homeostasis of naive and memory CD8 -positive T cells. It signals through the IL-7 receptor complex, which consists of the IL7R-alpha chain and the common IL2R-gamma chain.