

Anti-Growth Hormone Antibody
Catalog # ABO12708**Specification**

Anti-Growth Hormone Antibody - Product Information

Application	WB, IHC-P, E
Primary Accession	P01241
Host	Rabbit
Reactivity	Human
Clonality	Polyclonal
Format	Lyophilized

Description

Rabbit IgG polyclonal antibody for Somatotropin(GH1) detection. Tested with WB, IHC-P, ELISA in Human.

Reconstitution

Add 0.2ml of distilled water will yield a concentration of 500ug/ml.

Anti-Growth Hormone Antibody - Additional Information

Gene ID 2688

Other Names

Somatotropin, Growth hormone, GH, GH-N, Growth hormone 1, Pituitary growth hormone, GH1

Calculated MW

24847 MW KDa

Application Details

ELISA , 0.1-0.5 µg/ml, Human, -
Immunohistochemistry(Paraffin-embedded Section), 0.5-1 µg/ml, Human, By Heat
Western blot, 0.1-0.5 µg/ml, Human

Subcellular Localization

Secreted.

Protein Name

Somatotropin

Contents

Each vial contains 0.9mg NaCl, 0.2mg Na2HPO4, 0.05mg NaN3. Carrier free (No BSA) form available in stock. If you want this antibody carrier free please specify "Carrier Free" or "No BSA" in your order note. "

Immunogen

E. coli-derived human GH recombinant protein(Position: F27-F217).

Purification

Immunogen affinity purified.

Cross Reactivity

No cross reactivity with other proteins

Storage

At -20°C for one year. After reconstitution, at 4°C for one month. It can also be aliquotted and stored frozen at -20°C for a longer time. Avoid repeated freezing and thawing.

Sequence Similarities

Belongs to the somatotropin/prolactin family.

Anti-Growth Hormone Antibody - Protein Information

Name GH1

Function

Plays an important role in growth control. Its major role in stimulating body growth is to stimulate the liver and other tissues to secrete IGF1. It stimulates both the differentiation and proliferation of myoblasts. It also stimulates amino acid uptake and protein synthesis in muscle and other tissues.

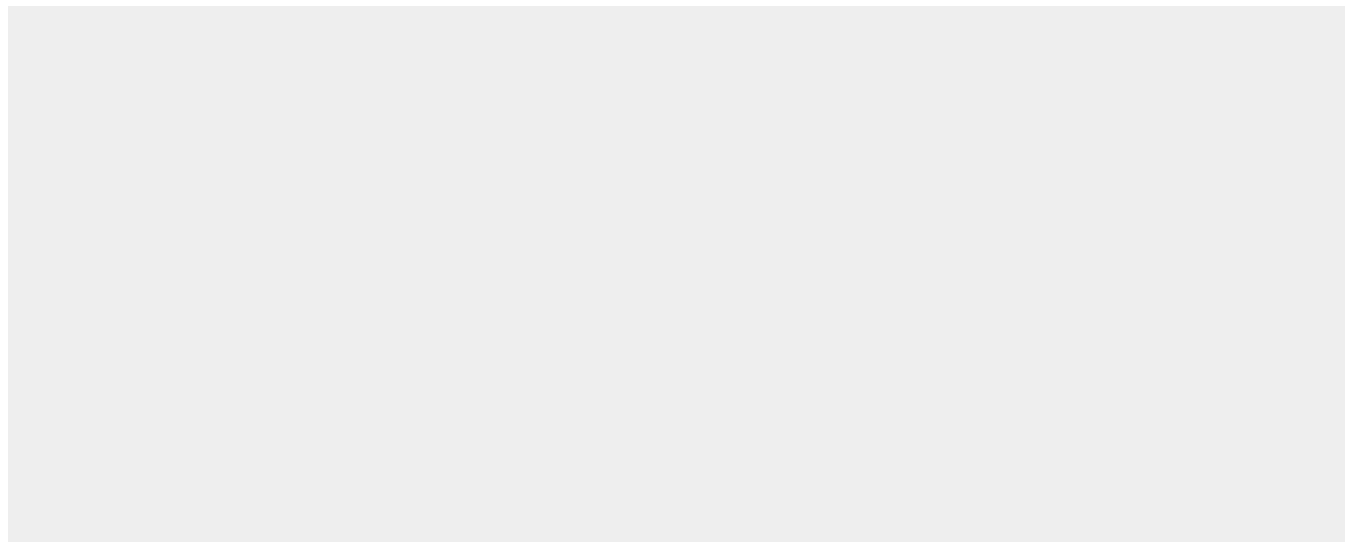
Cellular Location

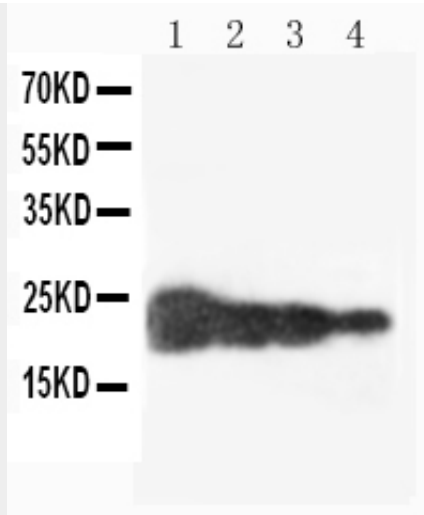
Secreted

Anti-Growth Hormone Antibody - Protocols

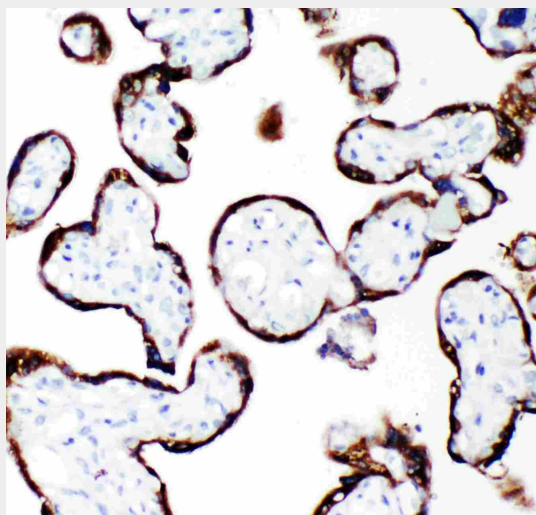
Provided below are standard protocols that you may find useful for product applications.

- [Western Blot](#)
- [Blocking Peptides](#)
- [Dot Blot](#)
- [Immunohistochemistry](#)
- [Immunofluorescence](#)
- [Immunoprecipitation](#)
- [Flow Cytometry](#)
- [Cell Culture](#)

Anti-Growth Hormone Antibody - Images



Anti-human Growth Hormone antibody, ABO12708, Western blotting
Lane 1: Recombinant Human GH Protein 10ng
Lane 2: Recombinant Human GH Protein 5ng
Lane 3: Recombinant Human GH Protein 2.5ng
Lane 4: Recombinant Human GH Protein 1.25ng



Anti-human Growth Hormone antibody, ABO12708, IHC(P)
IHC(P): Human Placenta Tissue

Anti-Growth Hormone Antibody - Background

Growth Hormone(GH) is mapped to 17q22-q24. Growth hormone(GH) is synthesized by acidophilic or somatotrophic cells of the anterior pituitary gland. Human growth hormone has a molecular mass of 22,005 and contains 191 amino acid residues with 2 disulfide bridges. It binds two receptor molecules and thereby induces signal transduction through receptor dimerization. At high concentrations, GH acts as an antagonist because of a large difference in affinities at the respective binding sites.