

Anti-Growth Hormone Antibody
Catalog # ABO12709**Specification**

Anti-Growth Hormone Antibody - Product Information

Application	WB
Primary Accession	P06880
Host	Rabbit
Reactivity	Mouse
Clonality	Polyclonal
Format	Lyophilized

Description

Rabbit IgG polyclonal antibody for Somatotropin(GH1) detection. Tested with WB in Mouse.

Reconstitution

Add 0.2ml of distilled water will yield a concentration of 500ug/ml.

Anti-Growth Hormone Antibody - Additional Information

Gene ID 14599

Other Names

Somatotropin, Growth hormone, Gh1, Gh

Calculated MW

24716 MW KDa

Application Details

Western blot, 0.1-0.5 µg/ml, Mouse

Subcellular Localization

Secreted.

Protein Name

Somatotropin

Contents

Each vial contains 0.9mg NaCl, 0.2mg Na₂HPO₄, 0.05mg NaN₃. Carrier free (No BSA) form available in stock. If you want this antibody carrier free please specify "Carrier Free" or "No BSA" in your order note. "

Immunogen

E. coli-derived mouse GH recombinant protein(Position: F27-F216).

Purification

Immunogen affinity purified.

Cross Reactivity

No cross reactivity with other proteins

Storage

At -20°C for one year. After reconstitution, at 4°C for one month. It can also be aliquotted and stored frozen at -20°C for a longer time. Avoid repeated freezing and thawing.

Anti-Growth Hormone Antibody - Protein Information

Name Gh1

Synonyms Gh

Function

Plays an important role in growth control. Its major role in stimulating body growth is to stimulate the liver and other tissues to secrete IGF1. It stimulates both the differentiation and proliferation of myoblasts. It also stimulates amino acid uptake and protein synthesis in muscle and other tissues.

Cellular Location

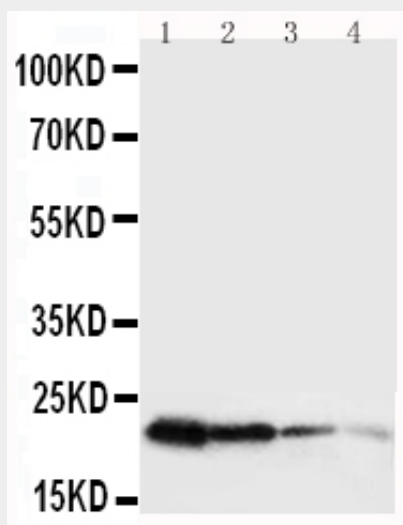
Secreted.

Anti-Growth Hormone Antibody - Protocols

Provided below are standard protocols that you may find useful for product applications.

- [Western Blot](#)
- [Blocking Peptides](#)
- [Dot Blot](#)
- [Immunohistochemistry](#)
- [Immunofluorescence](#)
- [Immunoprecipitation](#)
- [Flow Cytometry](#)
- [Cell Culture](#)

Anti-Growth Hormone Antibody - Images



Anti-mouse Growth Hormone antibody, ABO12709, Western blotting Lane 1: Recombinant Mouse

GH Protein 10ngLane 2: Recombinant Mouse GH Protein 5ngLane 3: Recombinant Mouse GH Protein 2

Anti-Growth Hormone Antibody - Background

Growth Hormone(GH) is mapped to 17q22-q24. Growth hormone(GH) is synthesized by acidophilic or somatotrophic cells of the anterior pituitary gland. Human growth hormone has a molecular mass of 22,005 and contains 191 amino acid residues with 2 disulfide bridges. It binds two receptor molecules and thereby induces signal transduction through receptor dimerization. At high concentrations, GH acts as an antagonist because of a large difference in affinities at the respective binding sites.