

Anti-Claudin 5 Antibody
Catalog # ABO12728**Specification**

Anti-Claudin 5 Antibody - Product Information

Application	WB
Primary Accession	O00501
Host	Rabbit
Reactivity	Human, Rat
Clonality	Polyclonal
Format	Lyophilized

Description

Rabbit IgG polyclonal antibody for Claudin-5(CLDN5) detection. Tested with WB in Human;Rat.

Reconstitution

Add 0.2ml of distilled water will yield a concentration of 500ug/ml.

Anti-Claudin 5 Antibody - Additional Information

Gene ID 7122

Other Names

Claudin-5, Transmembrane protein deleted in VCFS, TMDVCF, CLDN5, AWAL, TMVCF

Calculated MW

23147 MW KDa

Application Details

Western blot, 0.1-0.5 µg/ml, Rat, Human

Subcellular Localization

Cell junction, tight junction. Cell membrane; Multi-pass membrane protein.

Protein Name

Claudin-5

Contents

Each vial contains 5mg BSA, 0.9mg NaCl, 0.2mg Na₂HPO₄, 0.05mg Thimerosal, 0.05mg NaN₃.

Immunogen

A synthetic peptide corresponding to a sequence at the C-terminus of human Claudin 5(191-218aa RPDLSFPVKYSAPRRPTATGDYDKKNYV), different from the related mouse sequence by three amino acids and from the related rat sequence by four amino acids.

Purification

Immunogen affinity purified.

Cross Reactivity

No cross reactivity with other proteins

Storage

At -20°C for one year. After reconstitution, at 4°C for one month. It can also be aliquotted and stored frozen at -20°C for a longer time. Avoid repeated freezing and thawing.

Anti-Claudin 5 Antibody - Protein Information

Name CLDN5

Synonyms AWAL, TMVCF

Function

Plays a major role in tight junction-specific obliteration of the intercellular space.

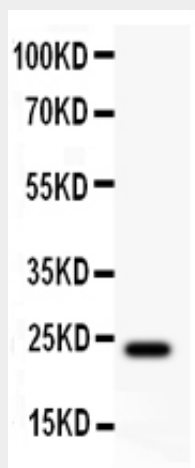
Cellular Location

Cell junction, tight junction. Cell membrane; Multi-pass membrane protein

Anti-Claudin 5 Antibody - Protocols

Provided below are standard protocols that you may find useful for product applications.

- [Western Blot](#)
- [Blocking Peptides](#)
- [Dot Blot](#)
- [Immunohistochemistry](#)
- [Immunofluorescence](#)
- [Immunoprecipitation](#)
- [Flow Cytometry](#)
- [Cell Culture](#)

Anti-Claudin 5 Antibody - Images

Anti- Claudin 5 Picoband antibody, ABO12728, Western blotting All lanes: Anti Claudin-5 (ABO12728) at 0.5ug/ml WB: Rat Liver Tissue Lysate at 50ug Predicted bind size: 23KD Observed bind size: 23KD

Anti-Claudin 5 Antibody - Background

Claudin-5 (CLDN5) also known as BEC1, is a protein that in humans is encoded by the CLDN5 gene. By use of yeast artificial chromosomes, Claudin-5 is localized between polymorphic markers D22S944 and D22S941 on chromosome 22q11, both of which are deleted in more than 80% of VCFS patients. This gene encodes a member of the claudin family. Claudins are integral membrane proteins and components of tight junction strands. Tight junction strands serve as a physical barrier to prevent solutes and water from passing freely through the paracellular space between epithelial or endothelial cell sheets. What's more, it plays a major role in tight junction-specific obliteration of the intercellular space.