

Anti-PTOV1 Antibody
Catalog # ABO12764**Specification**

Anti-PTOV1 Antibody - Product Information

Application	WB
Primary Accession	Q86YD1
Host	Rabbit
Reactivity	Human, Rat
Clonality	Polyclonal
Format	Lyophilized

Description

Rabbit IgG polyclonal antibody for Prostate tumor-overexpressed gene 1 protein(PTOV1) detection. Tested with WB in Human;Rat.

Reconstitution

Add 0.2ml of distilled water will yield a concentration of 500ug/ml.

Anti-PTOV1 Antibody - Additional Information

Gene ID 53635

Other Names

Prostate tumor-overexpressed gene 1 protein, PTOV-1, Activator interaction domain-containing protein 2, PTOV1, ACID2

Calculated MW

46869 MW KDa

Application Details

Western blot, 0.1-0.5 µg/ml, Rat, Human

Subcellular Localization

Cell membrane. Cytoplasm, perinuclear region. Nucleus. Translocates from the cytoplasm to the nucleus at the onset of S-phase. Also localizes to lipid rafts.

Tissue Specificity

Expressed in brain, heart, kidney, liver, placenta, skeletal muscle and small intestine. .

Protein Name

Prostate tumor-overexpressed gene 1 protein

Contents

Each vial contains 5mg BSA, 0.9mg NaCl, 0.2mg Na₂HPO₄, 0.05mg Na₃.

Immunogen

A synthetic peptide corresponding to a sequence at the C-terminus of human PTOV1 (385-414aa NFVNGIRRVIANQQQVLQRNLEQEQQQRGM), different from the related mouse and rat sequences by one amino acid.

Purification

Immunogen affinity purified.

Cross Reactivity

No cross reactivity with other proteins

Storage

At -20°C for one year. After reconstitution, at 4°C for one month. It can also be aliquotted and stored frozen at -20°C for a longer time. Avoid repeated freezing and thawing.

Sequence Similarities

Belongs to the Mediator complex subunit 25 family. PTOV1 subfamily.

Anti-PTOV1 Antibody - Protein Information

Name PTOV1

Synonyms ACID2

Function

May activate transcription. Required for nuclear translocation of FLOT1. Promotes cell proliferation.

Cellular Location

Cytoplasm. Nucleus. Cell membrane. Cytoplasm, perinuclear region. Note=Translocates from the cytoplasm to the nucleus at the onset of S-phase (PubMed:12598323). Also localizes to lipid rafts (PubMed:15713644).

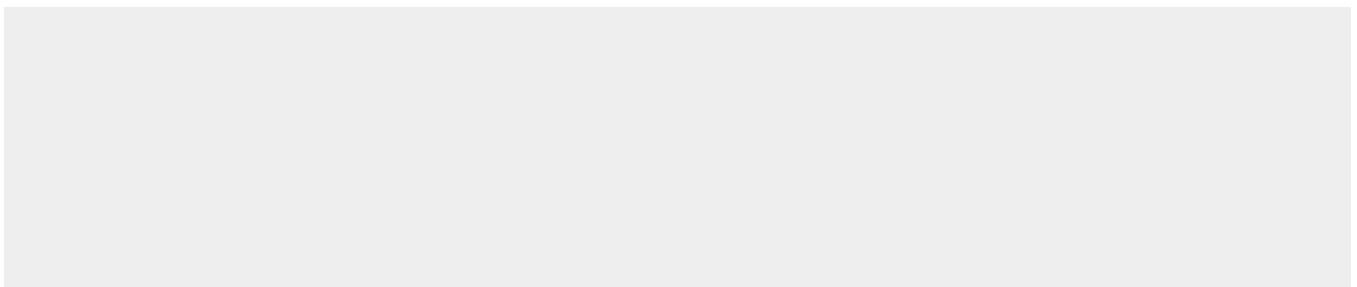
Tissue Location

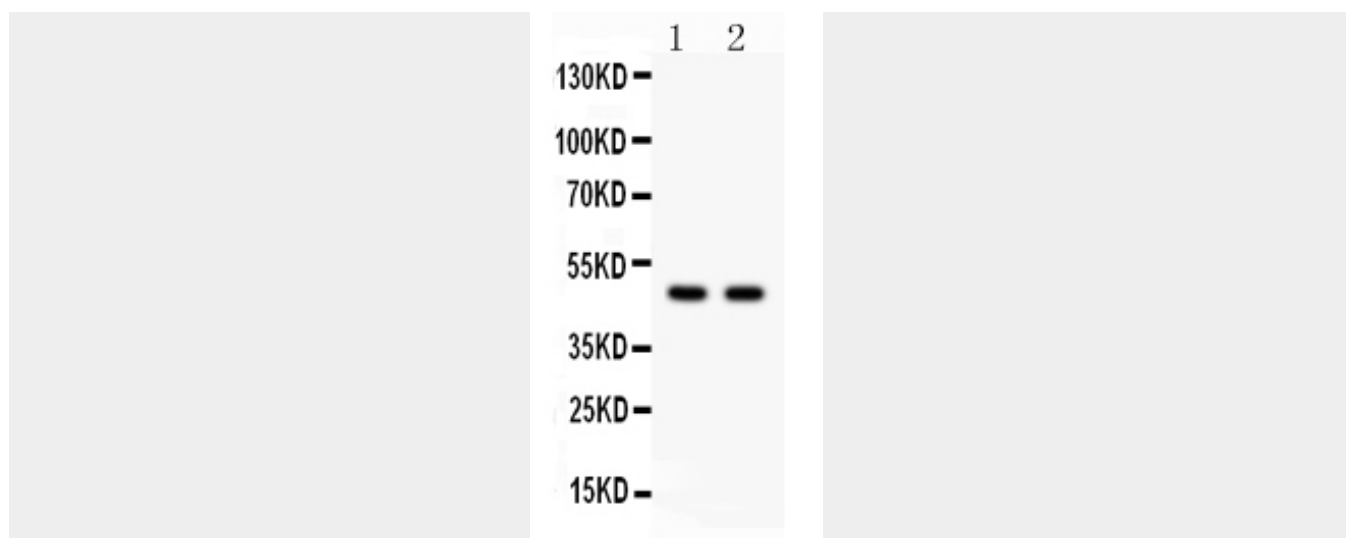
Expressed in brain, heart, kidney, liver, placenta, skeletal muscle and small intestine.

Anti-PTOV1 Antibody - Protocols

Provided below are standard protocols that you may find useful for product applications.

- [Western Blot](#)
- [Blocking Peptides](#)
- [Dot Blot](#)
- [Immunohistochemistry](#)
- [Immunofluorescence](#)
- [Immunoprecipitation](#)
- [Flow Cytometry](#)
- [Cell Culture](#)

Anti-PTOV1 Antibody - Images



Anti- PTOV1 antibody, ABO12764, Western blottingAll lanes: Anti PTOV1 (ABO12764) at 0.5ug/mlLane 1: Rat Brain Tissue Lysate at 50ugLane 2: Rat Kidney Tissue Lysate at 50ugPredicted bind size: 47KDObserved bind size: 47KD

Anti-PTOV1 Antibody - Background

Prostate tumor overexpressed gene 1 protein is a protein that in humans is encoded by the PTOV1 gene. It is mapped to 19q13.33. This gene encodes a protein that was found to be overexpressed in prostate adenocarcinomas. The encoded protein was found to interact with the lipid raft protein flotillin-1 and shuttle it from the cytoplasm to the nucleus in a cell cycle dependent manner. Alternative splicing of this gene results in multiple transcript variants.