

Anti-SR1 Antibody
Catalog # ABO12786**Specification**

Anti-SR1 Antibody - Product Information

Application	WB
Primary Accession	P30626
Host	Rabbit
Reactivity	Human, Rat
Clonality	Polyclonal
Format	Lyophilized

Description

Rabbit IgG polyclonal antibody for Sorcin(SRI) detection. Tested with WB in Human;Rat.

Reconstitution

Add 0.2ml of distilled water will yield a concentration of 500ug/ml.

Anti-SR1 Antibody - Additional Information

Gene ID 6717

Other Names

Sorcin, 22 kDa protein, CP-22, CP22, V19, SRI

Calculated MW

21676 MW KDa

Application Details

Western blot, 0.1-0.5 µg/ml, Human, Rat

Subcellular Localization

Cytoplasm. Sarcoplasmic reticulum membrane; Peripheral membrane protein; Cytoplasmic side. Relocates to the sarcoplasmic reticulum membrane in response to elevated calcium levels.

Tissue Specificity

Detected in cardiac myocytes.

Protein Name

Sorcin

Contents

Each vial contains 5mg BSA, 0.9mg NaCl, 0.2mg Na₂HPO₄, 0.05mg Na₃.

Immunogen

A synthetic peptide corresponding to a sequence in the middle region of human SR1 (89-116aa TMGFNEFKELWAVLNGWRQHFISFDTDR), different from the related mouse sequence by one amino acid.

Purification

Immunogen affinity purified.

Cross Reactivity

No cross reactivity with other proteins

Storage

At -20°C for one year. After reconstitution, at 4°C for one month. It can also be aliquotted and stored frozen at -20°C for a longer time. Avoid repeated freezing and thawing.

Anti-SR1 Antibody - Protein Information**Name** SRI**Function**

Calcium-binding protein that modulates excitation-contraction coupling in the heart. Contributes to calcium homeostasis in the heart sarcoplasmic reticulum. Modulates the activity of RYR2 calcium channels.

Cellular Location

Cytoplasm. Sarcoplasmic reticulum membrane; Peripheral membrane protein; Cytoplasmic side. Note=Relocates to the sarcoplasmic reticulum membrane in response to elevated calcium levels

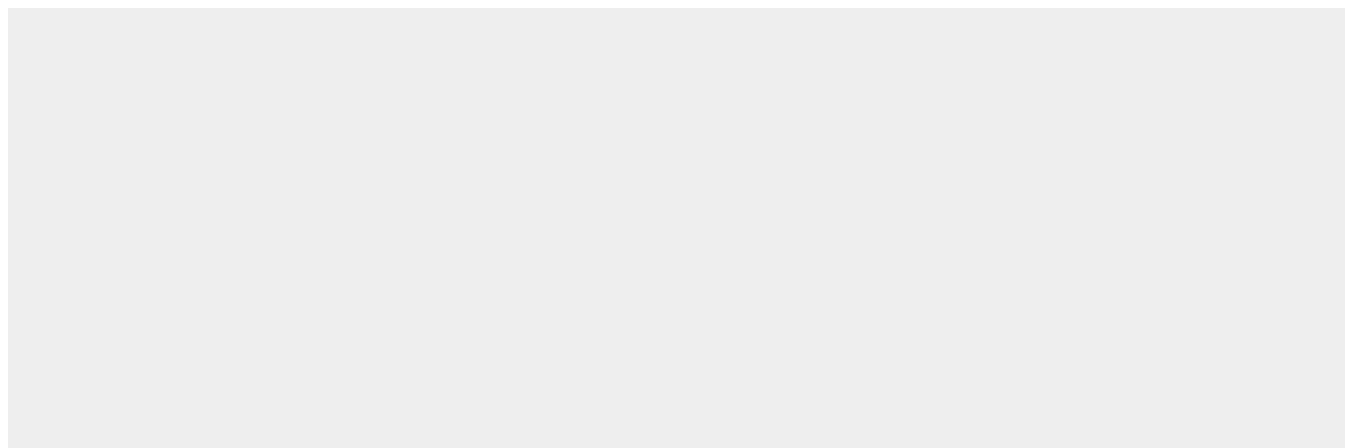
Tissue Location

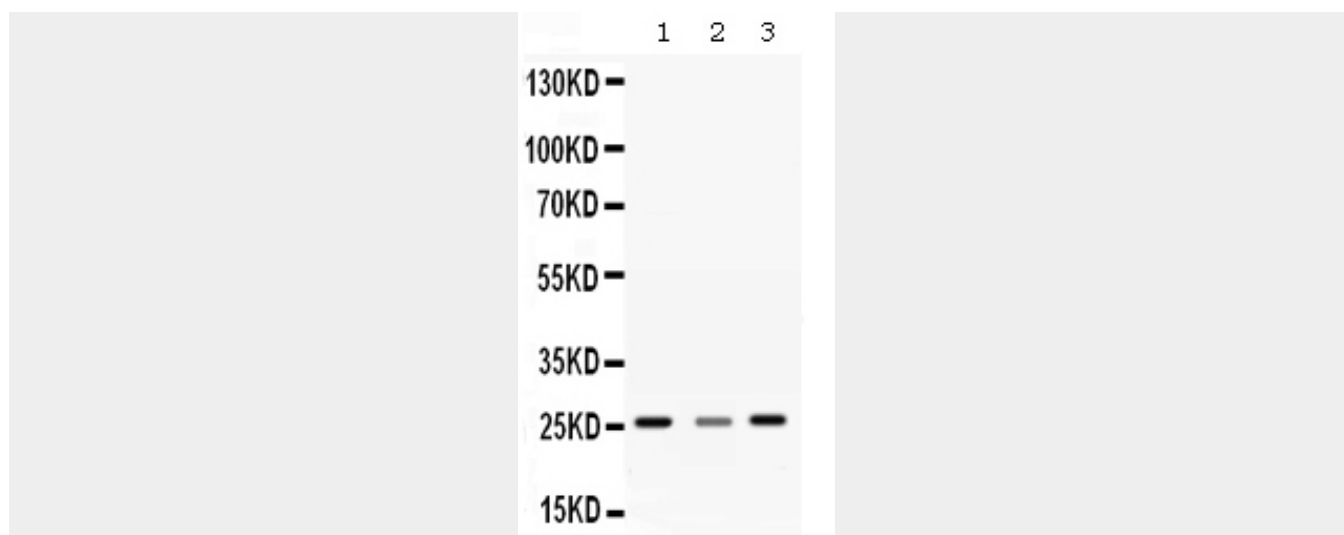
Detected in cardiac myocytes.

Anti-SR1 Antibody - Protocols

Provided below are standard protocols that you may find useful for product applications.

- [Western Blot](#)
- [Blocking Peptides](#)
- [Dot Blot](#)
- [Immunohistochemistry](#)
- [Immunofluorescence](#)
- [Immunoprecipitation](#)
- [Flow Cytometry](#)
- [Cell Culture](#)

Anti-SR1 Antibody - Images



Anti-SR1 Antibody - Background

Sorcin is a protein that in humans is encoded by the SRI gene. It is mapped to 7q21.1. This gene encodes a calcium-binding protein with multiple E-F hand domains that relocates from the cytoplasm to the sarcoplasmic reticulum in response to elevated calcium levels. In addition to regulating intracellular calcium homeostasis it also modulates excitation-contraction coupling in the heart. Alternative splicing results in multiple transcript variants encoding distinct proteins. Multiple pseudogenes exist for this gene.