

Anti-IL1 beta Picoband Antibody
Catalog # ABO12802**Specification**

Anti-IL1 beta Picoband Antibody - Product Information

Application	WB
Primary Accession	I11b: P10749
Host	Rabbit
Reactivity	Mouse, Rat
Clonality	Polyclonal
Format	Lyophilized

Description

Rabbit IgG polyclonal antibody for IL1 beta detection. Tested with WB in Mouse;Rat.

Reconstitution

Add 0.2ml of distilled water will yield a concentration of 500ug/ml.

Anti-IL1 beta Picoband Antibody - Additional Information**Application Details**

Western blot, 0.1-0.5 µg/ml

Subcellular Localization

Cytoplasm, cytosol

Tissue Specificity

Expressed in activated macrophages (at protein level).

Contents

Each vial contains 5mg BSA, 0.9mg NaCl, 0.2mg Na₂HPO₄, 0.05mg NaN₃.

Immunogen

A synthetic peptide corresponding to a sequence of mouse IL1 beta (DPKQYPKKKMEKR FVFNKIEVKSKVEFESAE).

Purification

Immunogen affinity purified.

Cross Reactivity

No cross reactivity with other proteins.

Storage

At -20°C for one year. After r°Constitution, at 4°C for one month. It°Can also be aliquotted and stored frozen at -20°C for a longer time. Avoid repeated freezing and thawing.

Anti-IL1 beta Picoband Antibody - Protein Information

Anti-IL1 beta Picoband Antibody - Protocols

Provided below are standard protocols that you may find useful for product applications.

- [Western Blot](#)
- [Blocking Peptides](#)
- [Dot Blot](#)
- [Immunohistochemistry](#)
- [Immunofluorescence](#)
- [Immunoprecipitation](#)
- [Flow Cytometry](#)
- [Cell Culture](#)

Anti-IL1 beta Picoband Antibody - Images

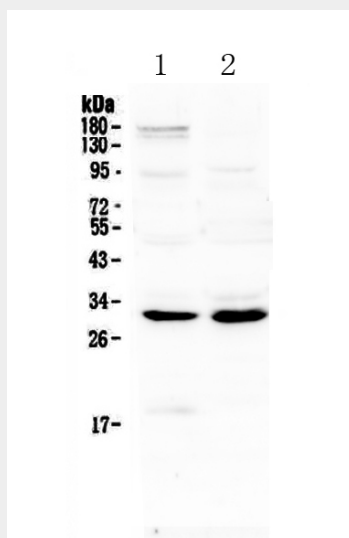


Figure 1. Western blot analysis of IL1 beta using anti-IL1 beta antibody (ABO12802). Electrophoresis was performed on a 5-20% SDS-PAGE gel at 70V (Stacking gel) / 90V (Resolving gel) for 2-3 hours. The sample well of each lane was loaded with 50ug of sample under reducing conditions. Lane 1: rat brain tissue lysates, Lane 2: mouse spleen tissue lysates. After Electrophoresis, proteins were transferred to a Nitrocellulose membrane at 150mA for 50-90 minutes. Blocked the membrane with 5% Non-fat Milk/ TBS for 1.5 hour at RT. The membrane was incubated with rabbit anti-IL1 beta antigen affinity purified polyclonal antibody (Catalog # ABO12802) at 0.5 µg/mL overnight at 4°C, then washed with TBS-0.1%Tween 3 times with 5 minutes each and probed with a goat anti-rabbit IgG-HRP secondary antibody at a dilution of 1:10000 for 1.5 hour at RT. The signal is developed using an Enhanced Chemiluminescent detection (ECL) kit with Tanon 5200 system. A specific band was detected for IL1 beta at approximately 31KD. The expected band size for IL1 beta is at 31KD.