

Anti-Syndecan-1/SDC1 Picoband Antibody
Catalog # ABO12911**Specification**

Anti-Syndecan-1/SDC1 Picoband Antibody - Product Information

Application	WB
Primary Accession	P18827
Host	Rabbit
Reactivity	Human
Clonality	Polyclonal
Format	Lyophilized

Description

Rabbit IgG polyclonal antibody for Syndecan-1(SDC1) detection. Tested with WB in Human.

Reconstitution

Add 0.2ml of distilled water will yield a concentration of 500ug/ml.

Anti-Syndecan-1/SDC1 Picoband Antibody - Additional Information

Gene ID 6382

Other Names

Syndecan-1, SYND1, CD138, SDC1, SDC

Calculated MW

32462 MW KDa

Application Details

Western blot, 0.1-0.5 µg/ml, Human

Subcellular Localization

Membrane; Single-pass type I membrane protein. Secreted. Shedding of the ectodomain produces a soluble form.

Contents

Each vial contains 5mg BSA, 0.9mg NaCl, 0.2mg Na₂HPO₄, 0.05mg Na₃.

Immunogen

E. coli-derived human Syndecan-1/SDC1 recombinant protein (Position: Q23-G254). Human Syndecan-1/SDC1 shares 69.2% and 69.8% amino acid (aa) sequence identity with mouse and rat Syndecan-1/SDC1, respectively.

Purification

Immunogen affinity purified.

Cross Reactivity

No cross reactivity with other proteins.

Storage

At -20°C for one year. After r°Constitution,

at 4°C for one month. It°Can also be aliquotted and stored frozen at -20°C for a longer time. Avoid repeated freezing and thawing.

Anti-Syndecan-1/SDC1 Picoband Antibody - Protein Information

Name SDC1 ([HGNC:10658](#))

Synonyms SDC

Function

Cell surface proteoglycan that contains both heparan sulfate and chondroitin sulfate and that links the cytoskeleton to the interstitial matrix (By similarity). Regulates exosome biogenesis in concert with SDCBP and PDCD6IP (PubMed:22660413). Able to induce its own expression in dental mesenchymal cells and also in the neighboring dental epithelial cells via an MSX1-mediated pathway (By similarity).

Cellular Location

Membrane; Single-pass type I membrane protein. Secreted Secreted, extracellular exosome
Note=Shedding of the ectodomain produces a soluble form

Tissue Location

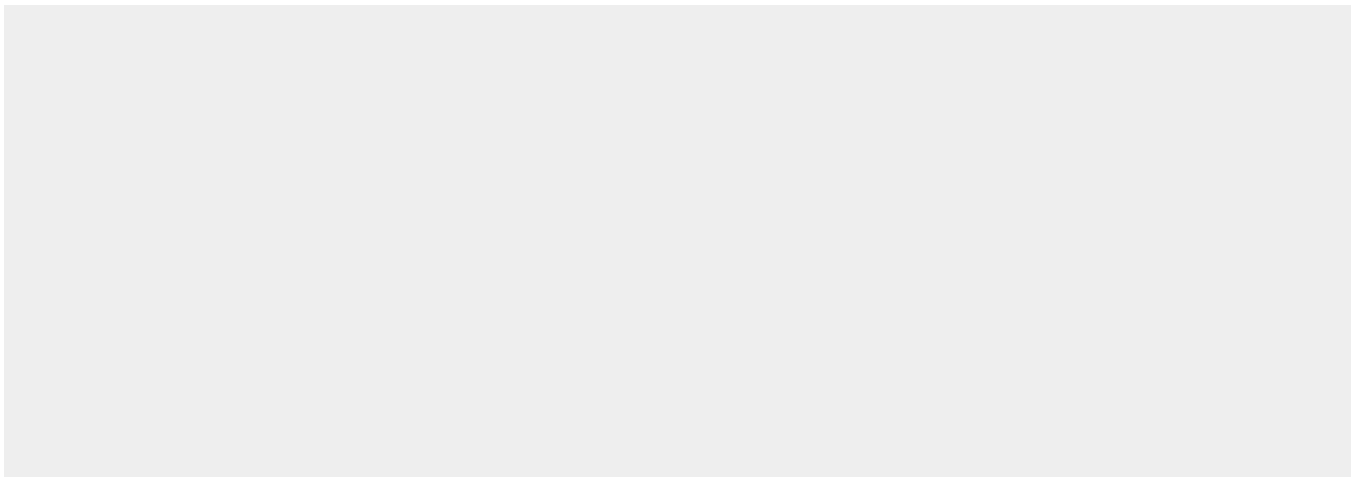
Detected in placenta (at protein level) (PubMed:32337544). Detected in fibroblasts (at protein level) (PubMed:36213313).

Anti-Syndecan-1/SDC1 Picoband Antibody - Protocols

Provided below are standard protocols that you may find useful for product applications.

- [Western Blot](#)
- [Blocking Peptides](#)
- [Dot Blot](#)
- [Immunohistochemistry](#)
- [Immunofluorescence](#)
- [Immunoprecipitation](#)
- [Flow Cytometry](#)
- [Cell Culture](#)

Anti-Syndecan-1/SDC1 Picoband Antibody - Images



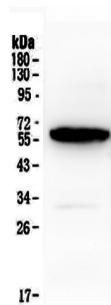


Figure 1. Western blot analysis of Syndecan-1/SDC1 using anti-Syndecan-1/SDC1 antibody (ABO12911).

Anti-Syndecan-1/SDC1 Picoband Antibody - Background

Syndecan 1 is a protein which in humans is encoded by the SDC1 gene. The protein encoded by this gene is a transmembrane (type I) heparan sulfate proteoglycan and is a member of the syndecan proteoglycan family. The syndecans mediate cell binding, cell signaling, and cytoskeletal organization and syndecan receptors are required for internalization of the HIV-1 tat protein. The syndecan-1 protein functions as an integral membrane protein and participates in cell proliferation, cell migration and cell-matrix interactions via its receptor for extracellular matrix proteins. Altered syndecan-1 expression has been detected in several different tumor types. While several transcript variants may exist for this gene, the full-length nature of only two have been described to date. These two represent the major variants of this gene and encode the same protein.