

**Anti-IL12B Picoband Antibody**  
**Catalog # ABO12929****Specification****Anti-IL12B Picoband Antibody - Product Information**

Application	WB, E
Primary Accession	<a href="#">P29460</a>
Host	Rabbit
Reactivity	Human, Mouse
Clonality	Polyclonal
Format	Lyophilized

**Description**

Rabbit IgG polyclonal antibody for IL12B detection. Tested with WB, Direct ELISA in Human;Mouse.

**Reconstitution**

Add 0.2ml of distilled water will yield a concentration of 500ug/ml.

**Anti-IL12B Picoband Antibody - Additional Information**

**Gene ID** 3593

**Other Names**

Interleukin-12 subunit beta, IL-12B, Cytotoxic lymphocyte maturation factor 40 kDa subunit, CLMF p40, IL-12 subunit p40, NK cell stimulatory factor chain 2, NKSF2, IL12B, NKSF2

**Application Details**

Western blot, 0.1-0.5 µg/ml<br> Direct ELISA, 0.1-0.5 µg/ml<br>

**Subcellular Localization**

Secreted.

**Contents**

Each vial contains 4mg Trehalose, 0.9mg NaCl, 0.2mg Na<sub>2</sub>HPO<sub>4</sub>, 0.05mg NaN<sub>3</sub>.

**Immunogen**

E. coli-derived human IL12B recombinant protein (Position: I23-E253).

**Cross Reactivity**

No cross reactivity with other proteins.

**Storage**

**At -20°C; for one year. After r°Constitution, at 4°C; for one month. It°Can also be aliquotted and stored frozen at -20°C; for a longer time. Avoid repeated freezing and thawing.**

**Anti-IL12B Picoband Antibody - Protein Information**

**Name** IL12B

**Synonyms** NKSF2

**Function**

Cytokine that can act as a growth factor for activated T and NK cells, enhance the lytic activity of NK/lymphokine-activated killer cells, and stimulate the production of IFN-gamma by resting PBMC.

**Cellular Location**

Secreted.

**Anti-IL12B Picoband Antibody - Protocols**

Provided below are standard protocols that you may find useful for product applications.

- [Western Blot](#)
- [Blocking Peptides](#)
- [Dot Blot](#)
- [Immunohistochemistry](#)
- [Immunofluorescence](#)
- [Immunoprecipitation](#)
- [Flow Cytometry](#)
- [Cell Culture](#)

**Anti-IL12B Picoband Antibody - Images**

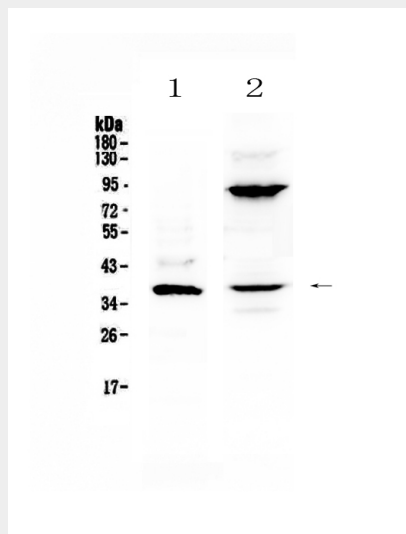


Figure 1. Western blot analysis of IL12B using anti-IL12B antibody (ABO12929).

**Anti-IL12B Picoband Antibody - Background**

Subunit beta of interleukin 12 (IL12B), also known as interleukin 12B, or interleukin-12 subunit p40, is a subunit of human interleukin 12. It is mapped to 5q33.3. This cytokine is expressed by activated macrophages that serve as an essential inducer of Th1 cells development. This cytokine has been found to be important for sustaining a sufficient number of memory/effector Th1 cells to mediate long-term protection to an intracellular pathogen. Overexpression of this gene was observed in the central nervous system of patients with multiple sclerosis (MS), suggesting a role of this cytokine in the pathogenesis of the disease.