

Anti-Carboxypeptidase A Picoband Antibody
Catalog # ABO13048**Specification**

Anti-Carboxypeptidase A Picoband Antibody - Product Information

Application	WB
Primary Accession	P15085
Host	Rabbit
Reactivity	Human, Mouse, Rat
Clonality	Polyclonal
Format	Lyophilized

Description

Rabbit IgG polyclonal antibody for Carboxypeptidase A detection. Tested with WB in Human;Mouse;Rat.

Reconstitution

Add 0.2ml of distilled water will yield a concentration of 500ug/ml.

Anti-Carboxypeptidase A Picoband Antibody - Additional Information

Gene ID 1357

Other Names

Carboxypeptidase A1, 3.4.17.1, CPA1, CPA

Application Details

Western blot, 0.1-0.5 µg/ml

Subcellular Localization

Secreted.

Contents

Each vial contains 4mg Trehalose, 0.9mg NaCl, 0.2mg Na₂HPO₄, 0.05mg NaN₃.

Immunogen

A synthetic peptide corresponding to a sequence of human Carboxypeptidase A (KRPAIWIDTGIHSREWVTQASGVWFAKKITQDYGDAAFTAILDTLD).

Cross Reactivity

No cross reactivity with other proteins.

Storage

At -20°C; for one year. After r°Constitution, at 4°C; for one month. It°Can also be aliquotted and stored frozen at -20°C; for a longer time. Avoid repeated freezing and thawing.

Anti-Carboxypeptidase A Picoband Antibody - Protein Information

Name CPA1 ([HGNC:2296](#))

Synonyms CPA

Function

Carboxypeptidase that catalyzes the release of a C-terminal amino acid, but has little or no action with -Asp, -Glu, -Arg, -Lys or -Pro (PubMed:8806703). Catalyzes the conversion of leukotriene C4 to leukotriene F4 via the hydrolysis of an amide bond (By similarity).

Cellular Location

Secreted.

Anti-Carboxypeptidase A Picoband Antibody - Protocols

Provided below are standard protocols that you may find useful for product applications.

- [Western Blot](#)
- [Blocking Peptides](#)
- [Dot Blot](#)
- [Immunohistochemistry](#)
- [Immunofluorescence](#)
- [Immunoprecipitation](#)
- [Flow Cytometry](#)
- [Cell Culture](#)

Anti-Carboxypeptidase A Picoband Antibody - Images

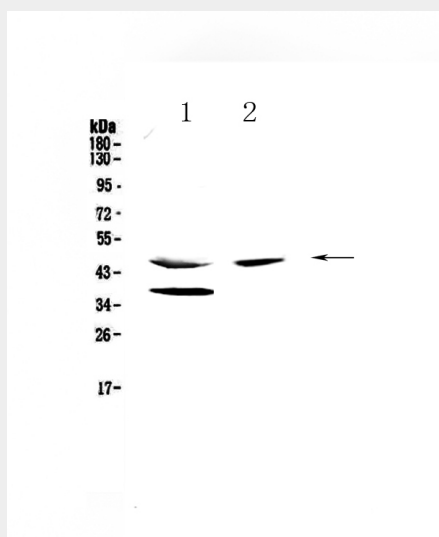


Figure 1. Western blot analysis of Carboxypeptidase A using anti-Carboxypeptidase A antibody (ABO13048).

Anti-Carboxypeptidase A Picoband Antibody - Background

Carboxypeptidase A1 is an enzyme that in humans is encoded by the CPA1 gene. This gene encodes a member of the carboxypeptidase A family of zinc metalloproteases. This enzyme is produced in the pancreas and preferentially cleaves C-terminal branched-chain and aromatic amino

acids from dietary proteins. This gene and several family members are present in a gene cluster on chromosome 7. Mutations in this gene may be linked to chronic pancreatitis, while elevated protein levels may be associated with pancreatic cancer.