

Anti-RND1 Picoband Antibody
Catalog # ABO13051**Specification**

Anti-RND1 Picoband Antibody - Product Information

Application	WB
Primary Accession	Q92730
Host	Rabbit
Reactivity	Human, Mouse
Clonality	Polyclonal
Format	Lyophilized

Description

Rabbit IgG polyclonal antibody for Rho-related GTP-binding protein Rho6(RND1) detection. Tested with WB in Human;Mouse.

Reconstitution

Add 0.2ml of distilled water will yield a concentration of 500ug/ml.

Anti-RND1 Picoband Antibody - Additional Information

Gene ID 27289

Other Names

Rho-related GTP-binding protein Rho6, Rho family GTPase 1, Rnd1, RND1, RHO6

Calculated MW

26056 MW KDa

Application Details

Western blot, 0.1-0.5 µg/ml, Mouse, Human

Subcellular Localization

Cell membrane ; Lipid-anchor ; Cytoplasmic side . Cytoplasm, cytoskeleton .

Tissue Specificity

Mostly expressed in brain and liver.

Contents

Each vial contains 5mg BSA, 0.9mg NaCl, 0.2mg Na₂HPO₄, 0.05mg NaN₃.

Immunogen

E. coli-derived human RND1 recombinant protein (Position: K105-C229). Human RND1 shares 95.2% amino acid (aa) sequence identity with mouse RND1.

Purification

Immunogen affinity purified.

Cross Reactivity

No cross reactivity with other proteins.

Storage

At -20°C for one year. After reconstitution, at 4°C for one month. It can also be aliquotted and stored frozen at -20°C for a longer time. Avoid repeated freezing and thawing.

Anti-RND1 Picoband Antibody - Protein Information

Name RND1

Synonyms RHO6

Function

Lacks intrinsic GTPase activity. Has a low affinity for GDP, and constitutively binds GTP. Controls rearrangements of the actin cytoskeleton. Induces the Rac-dependent neuritic process formation in part by disruption of the cortical actin filaments. Causes the formation of many neuritic processes from the cell body with disruption of the cortical actin filaments.

Cellular Location

Cell membrane; Lipid-anchor; Cytoplasmic side. Cytoplasm, cytoskeleton

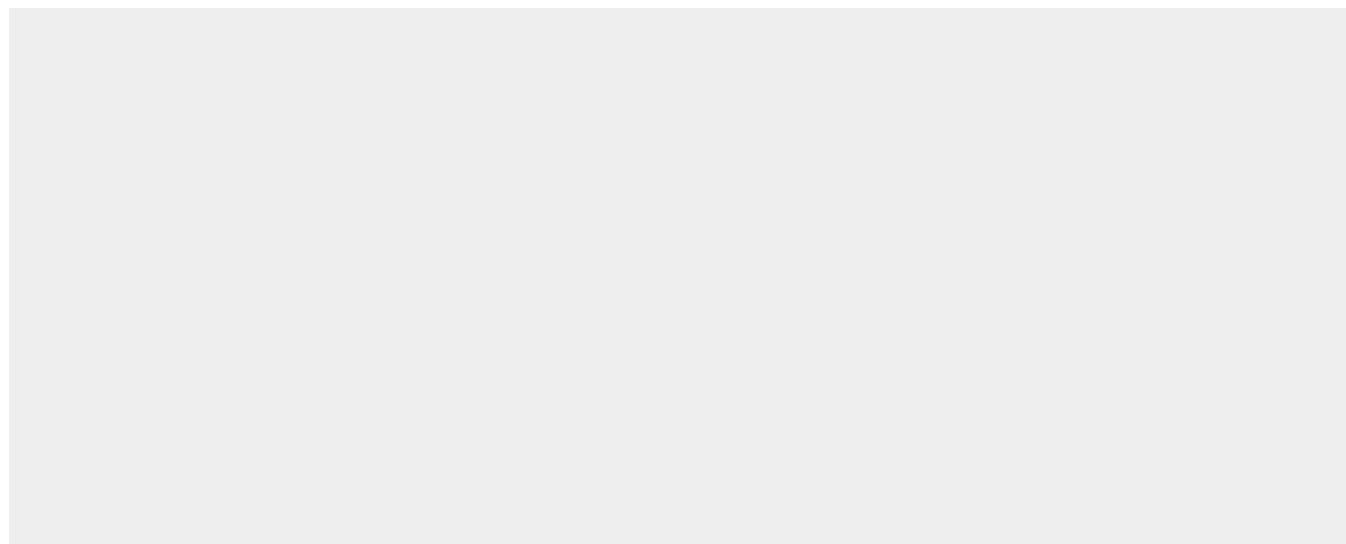
Tissue Location

Mostly expressed in brain and liver.

Anti-RND1 Picoband Antibody - Protocols

Provided below are standard protocols that you may find useful for product applications.

- [Western Blot](#)
- [Blocking Peptides](#)
- [Dot Blot](#)
- [Immunohistochemistry](#)
- [Immunofluorescence](#)
- [Immunoprecipitation](#)
- [Flow Cytometry](#)
- [Cell Culture](#)

Anti-RND1 Picoband Antibody - Images

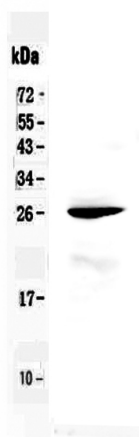


Figure 1. Western blot analysis of RND1 using anti-RND1 antibody (ABO13051).

Anti-RND1 Picoband Antibody - Background

Rnd1 is a small (~21 kDa) signaling G protein (to be specific, a GTPase), and is a member of the Rndsubgroup of the Rho family of GTPases. Members of this family regulate the organization of the actin cytoskeleton in response to extracellular growth factors. A similar protein in rat interacts with a microtubule regulator to control axon extension. The RND1 gene is mapped to chromosome 12q12-q13.