

Anti-SIX6 Picoband Antibody
Catalog # ABO13054**Specification**

Anti-SIX6 Picoband Antibody - Product Information

Application	WB
Primary Accession	O95475
Host	Rabbit
Reactivity	Human
Clonality	Polyclonal
Format	Lyophilized

Description

Rabbit IgG polyclonal antibody for Homeobox protein SIX6(SIX6) detection. Tested with WB in Human.

Reconstitution

Add 0.2ml of distilled water will yield a concentration of 500ug/ml.

Anti-SIX6 Picoband Antibody - Additional Information

Gene ID 4990

Other Names

Homeobox protein SIX6, Homeodomain protein OPTX2, Optic homeobox 2, Sine oculis homeobox homolog 6, SIX6, OPTX2, SIX9

Calculated MW

27687 MW KDa

Application Details

Western blot, 0.1-0.5 µg/ml, Human

Subcellular Localization

Nucleus .

Tissue Specificity

Expressed in the developing and adult retina. Also expressed in the hypothalamic and the pituitary regions.

Contents

Each vial contains 5mg BSA, 0.9mg NaCl, 0.2mg Na2HPO4, 0.05mg NaN3.

Immunogen

E. coli-derived human SIX6 recombinant protein (Position: A188-I246). Human SIX6 shares 91.5% amino acid (aa) sequence identity with mouse SIX6.

Purification

Immunogen affinity purified.

Cross Reactivity

No cross reactivity with other proteins.

Storage

At -20°C for one year. After reconstitution, at 4°C for one month. It can also be aliquotted and stored frozen at -20°C for a longer time. Avoid repeated freezing and thawing.

Anti-SIX6 Picoband Antibody - Protein Information

Name SIX6

Synonyms OPTX2, SIX9

Function

May be involved in eye development.

Cellular Location

Nucleus {ECO:0000255|PROSITE-ProRule:PRU00108}.

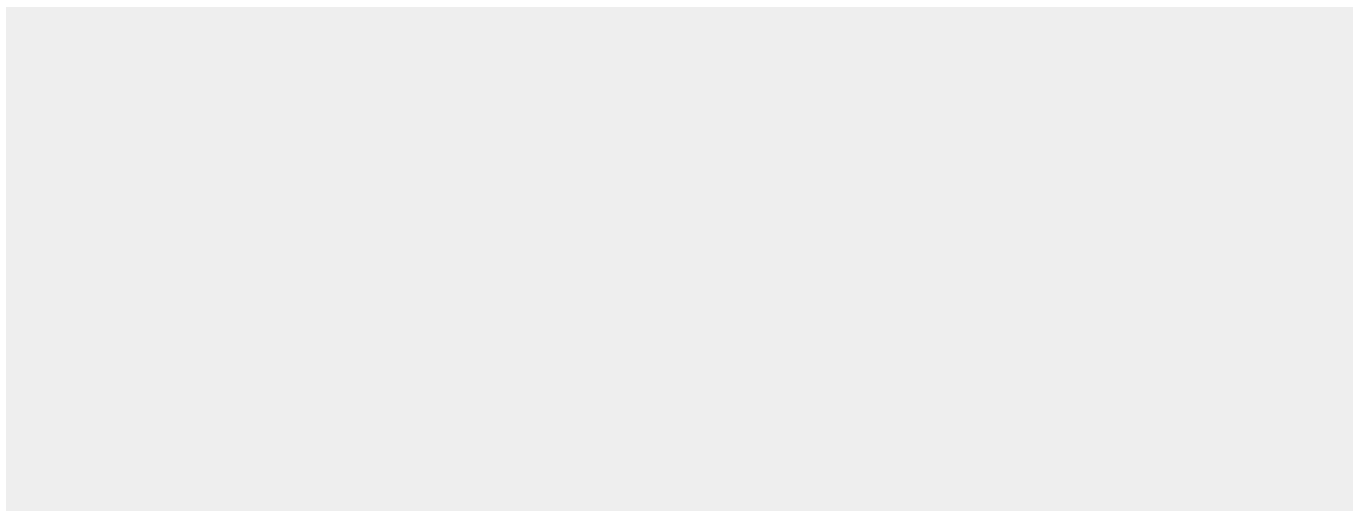
Tissue Location

Expressed in the developing and adult retina. Also expressed in the hypothalamic and the pituitary regions

Anti-SIX6 Picoband Antibody - Protocols

Provided below are standard protocols that you may find useful for product applications.

- [Western Blot](#)
- [Blocking Peptides](#)
- [Dot Blot](#)
- [Immunohistochemistry](#)
- [Immunofluorescence](#)
- [Immunoprecipitation](#)
- [Flow Cytometry](#)
- [Cell Culture](#)

Anti-SIX6 Picoband Antibody - Images

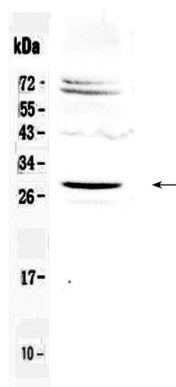


Figure 1. Western blot analysis of SIX6 using anti-SIX6 antibody (ABO13054).

Anti-SIX6 Picoband Antibody - Background

The protein encoded by this gene is a homeobox protein that is similar to the *Drosophila* 'sine oculis' gene product. This gene is found in a cluster of related genes on chromosome 14 and is thought to be involved in eye development. Defects in this gene are a cause of isolated microphthalmia with cataract type 2 (MCOPCT2).