

Anti-Phospho-LAT (Y191) Rabbit Monoclonal Antibody
Catalog # ABO13107**Specification**

Anti-Phospho-LAT (Y191) Rabbit Monoclonal Antibody - Product Information

Application	WB, IHC, IF, ICC, IP
Primary Accession	O43561
Host	Rabbit
Isotype	Rabbit IgG
Reactivity	Rat, Human, Mouse
Clonality	Monoclonal
Format	Liquid

Description

Anti-Phospho-LAT (Y191) Rabbit Monoclonal Antibody . Tested in WB, IHC, ICC/IF, IP applications. This antibody reacts with Human, Mouse, Rat.

Anti-Phospho-LAT (Y191) Rabbit Monoclonal Antibody - Additional Information

Gene ID 27040

Other Names

Linker for activation of T-cells family member 1, 36 kDa phosphotyrosine adapter protein, pp36, p36-38, LAT

Calculated MW

27930 MW KDa

Application Details

WB 1:500-1:2000
IHC 1:50-1:200
ICC/IF 1:50-1:200
IP 1:30

Subcellular Localization

Cell membrane ; Single-pass type III membrane protein. Present in lipid rafts.

Tissue Specificity

Expressed in thymus, T-cells, NK cells, mast cells and, at lower levels, in spleen. Present in T-cells but not B-cells (at protein level)..

Contents

Rabbit IgG in phosphate buffered saline, pH 7.4, 150mM NaCl, 0.02% sodium azide and 50% glycerol, 0.4-0.5mg/ml BSA.

Immunogen

A synthesized peptide derived from human Phospho-LAT (Y191)

Purification

Affinity-chromatography

Storage

Store at -20°C for one year. For short term storage and frequent use, store at 4°C for

**up to one month. Avoid repeated
freeze-thaw cycles.**

Anti-Phospho-LAT (Y191) Rabbit Monoclonal Antibody - Protein Information

Name LAT

Function

Required for TCR (T-cell antigen receptor)- and pre-TCR- mediated signaling, both in mature T-cells and during their development (PubMed:23514740, PubMed:25907557). Involved in FCGR3 (low affinity immunoglobulin gamma Fc region receptor III)-mediated signaling in natural killer cells and FCER1 (high affinity immunoglobulin epsilon receptor)-mediated signaling in mast cells. Couples activation of these receptors and their associated kinases with distal intracellular events such as mobilization of intracellular calcium stores, PKC activation, MAPK activation or cytoskeletal reorganization through the recruitment of PLCG1, GRB2, GRAP2, and other signaling molecules.

Cellular Location

Cell membrane; Single-pass type III membrane protein. Note=Present in lipid rafts

Tissue Location

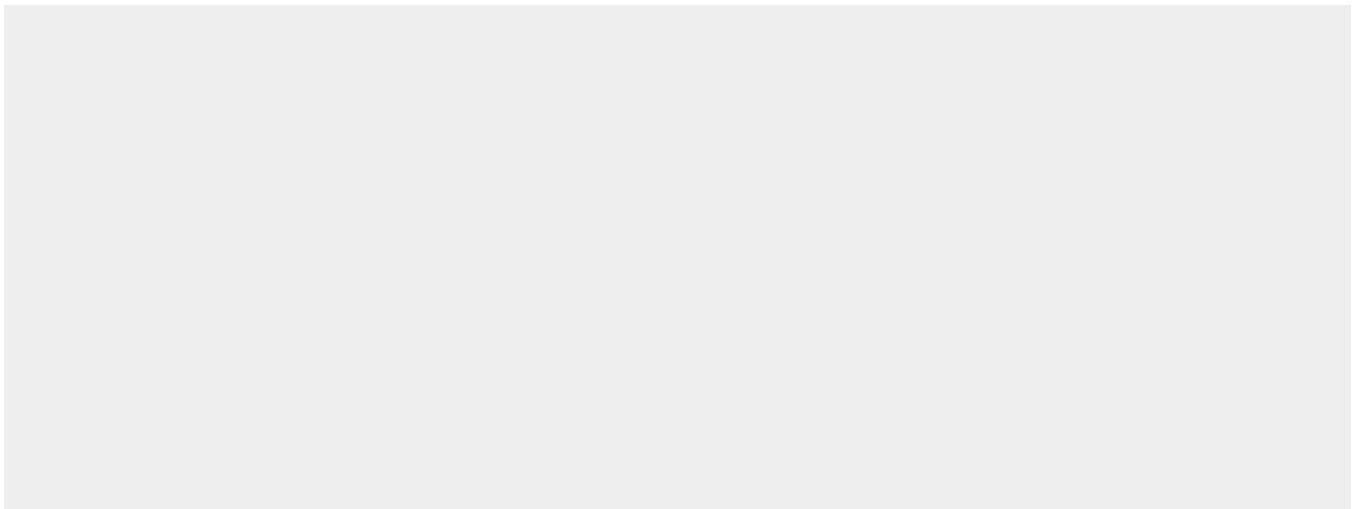
Expressed in thymus, T-cells, NK cells, mast cells and, at lower levels, in spleen. Present in T-cells but not B-cells (at protein level).

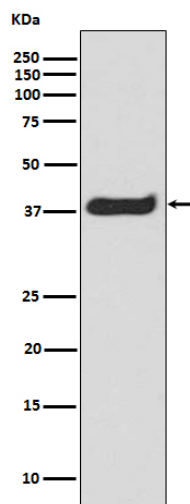
Anti-Phospho-LAT (Y191) Rabbit Monoclonal Antibody - Protocols

Provided below are standard protocols that you may find useful for product applications.

- [Western Blot](#)
- [Blocking Peptides](#)
- [Dot Blot](#)
- [Immunohistochemistry](#)
- [Immunofluorescence](#)
- [Immunoprecipitation](#)
- [Flow Cytometry](#)
- [Cell Culture](#)

Anti-Phospho-LAT (Y191) Rabbit Monoclonal Antibody - Images





Western blot analysis of Phospho-LAT (Y220) in Jurkat cell treated with CD3 lysate.