

Anti-Phospho-Cdc6 (S54) Rabbit Monoclonal Antibody
Catalog # ABO13119**Specification**

Anti-Phospho-Cdc6 (S54) Rabbit Monoclonal Antibody - Product Information

Application	WB, IF, ICC
Primary Accession	Q99741
Host	Rabbit
Isotype	Rabbit IgG
Reactivity	Human
Clonality	Monoclonal
Format	Liquid

Description

Anti-Phospho-Cdc6 (S54) Rabbit Monoclonal Antibody . Tested in WB, ICC/IF applications. This antibody reacts with Human.

Anti-Phospho-Cdc6 (S54) Rabbit Monoclonal Antibody - Additional Information

Gene ID 990

Other Names

Cell division control protein 6 homolog, CDC6-related protein, Cdc18-related protein, HsCdc18, p62(cdc6), HsCDC6, CDC6, CDC18L

Calculated MW

62720 MW KDa

Application Details

WB 1:500-1:1000
ICC/IF 1:50-1:200

Subcellular Localization

Nucleus. Cytoplasm. The protein is nuclear in G1 and cytoplasmic in S-phase cells.

Contents

Rabbit IgG in phosphate buffered saline, pH 7.4, 150mM NaCl, 0.02% sodium azide and 50% glycerol, 0.4-0.5mg/ml BSA.

Immunogen

A synthesized peptide derived from human Phospho-Cdc6 (S54)

Purification

Affinity-chromatography

Storage

Store at -20°C for one year. For short term storage and frequent use, store at 4°C for up to one month. Avoid repeated freeze-thaw cycles.

Anti-Phospho-Cdc6 (S54) Rabbit Monoclonal Antibody - Protein Information

Name CDC6

Synonyms CDC18L

Function

Involved in the initiation of DNA replication. Also participates in checkpoint controls that ensure DNA replication is completed before mitosis is initiated.

Cellular Location

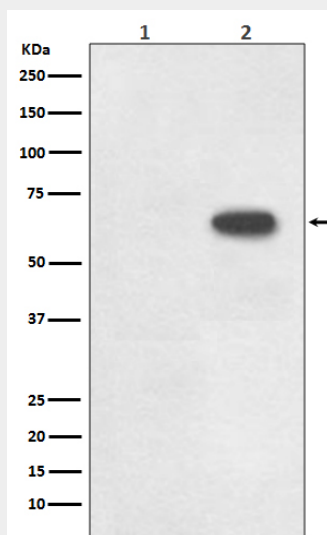
Nucleus. Cytoplasm Note=The protein is nuclear in G1 and cytoplasmic in S-phase cells (PubMed:9566895).

Anti-Phospho-Cdc6 (S54) Rabbit Monoclonal Antibody - Protocols

Provided below are standard protocols that you may find useful for product applications.

- [Western Blot](#)
- [Blocking Peptides](#)
- [Dot Blot](#)
- [Immunohistochemistry](#)
- [Immunofluorescence](#)
- [Immunoprecipitation](#)
- [Flow Cytometry](#)
- [Cell Culture](#)

Anti-Phospho-Cdc6 (S54) Rabbit Monoclonal Antibody - Images



Western blot analysis of Phospho-Cdc6 (S54) expression in (1) Raji cell lysate; (2) Raji + FBS cell lysate.