

## Anti-Phospho-Creb (S133) CREB1 Rabbit Monoclonal Antibody Catalog # ABO13123

### Specification

---

#### Anti-Phospho-Creb (S133) CREB1 Rabbit Monoclonal Antibody - Product Information

Application	WB, IHC, IF, ICC, IP, FC
Primary Accession	<a href="#">P16220</a>
Host	Rabbit
Isotype	Rabbit IgG
Reactivity	Rat, Human, Mouse
Clonality	Monoclonal
Format	Liquid

#### Description

Anti-Phospho-Creb (S133) CREB1 Rabbit Monoclonal Antibody . Tested in WB, IHC, ICC/IF, IP, Flow Cytometry applications. This antibody reacts with Human, Mouse, Rat.

#### Anti-Phospho-Creb (S133) CREB1 Rabbit Monoclonal Antibody - Additional Information

Gene ID 1385

#### Other Names

Cyclic AMP-responsive element-binding protein 1, CREB-1, cAMP-responsive element-binding protein 1, CREB1

#### Calculated MW

36688 MW KDa

#### Application Details

WB 1:500-1:2000<br>IHC 1:50-1:200<br>ICC/IF 1:50-1:200<br>IP 1:40<br>FC 1:40

#### Subcellular Localization

Nucleus.

#### Contents

Rabbit IgG in phosphate buffered saline, pH 7.4, 150mM NaCl, 0.02% sodium azide and 50% glycerol, 0.4-0.5mg/ml BSA.

#### Immunogen

A synthesized peptide derived from human Phospho-Creb (S133)

#### Purification

Affinity-chromatography

Storage

Store at -20°C for one year. For short term storage and frequent use, store at 4°C for up to one month. Avoid repeated freeze-thaw cycles.

#### Anti-Phospho-Creb (S133) CREB1 Rabbit Monoclonal Antibody - Protein Information

## Name CREB1

### Function

Phosphorylation-dependent transcription factor that stimulates transcription upon binding to the DNA cAMP response element (CRE), a sequence present in many viral and cellular promoters (By similarity). Transcription activation is enhanced by the TORC coactivators which act independently of Ser-119 phosphorylation (PubMed:<a href="http://www.uniprot.org/citations/14536081" target="\_blank">14536081</a>). Involved in different cellular processes including the synchronization of circadian rhythmicity and the differentiation of adipose cells (By similarity). Regulates the expression of apoptotic and inflammatory response factors in cardiomyocytes in response to ERFE-mediated activation of AKT signaling (By similarity).

### Cellular Location

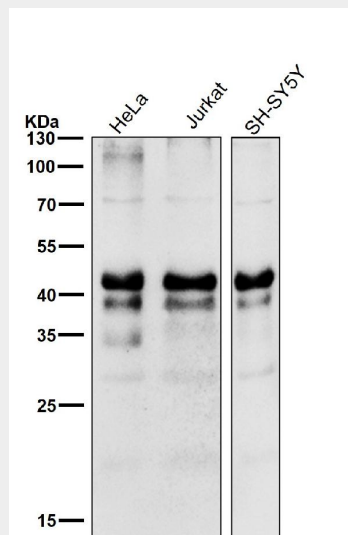
Nucleus {ECO:0000255|PROSITE-ProRule:PRU00312, ECO:0000255|PROSITE-ProRule:PRU00978, ECO:0000269|PubMed:12552083}

## Anti-Phospho-Creb (S133) CREB1 Rabbit Monoclonal Antibody - Protocols

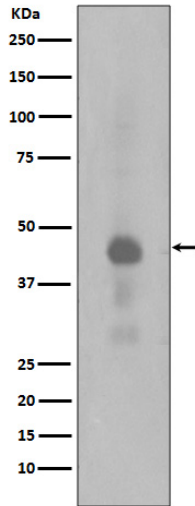
Provided below are standard protocols that you may find useful for product applications.

- [Western Blot](#)
- [Blocking Peptides](#)
- [Dot Blot](#)
- [Immunohistochemistry](#)
- [Immunofluorescence](#)
- [Immunoprecipitation](#)
- [Flow Cytometry](#)
- [Cell Culture](#)

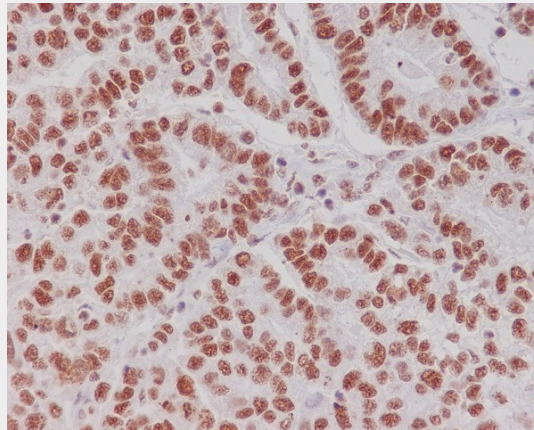
## Anti-Phospho-Creb (S133) CREB1 Rabbit Monoclonal Antibody - Images



All lanes use the Antibody at 1:1k dilution for 1 hour at room temperature.



Western blot analysis of Phospho-Creb(Ser133) expression in HeLa cell lysates treated with Calyculin A.



Immunohistochemical analysis of paraffin-embedded human gastric carcinoma, using Phospho-Creb (S133) Antibody.