

**Anti-Phospho-c-Myc (S62) Rabbit Monoclonal Antibody**  
Catalog # ABO13127**Specification****Anti-Phospho-c-Myc (S62) Rabbit Monoclonal Antibody - Product Information**

Application	WB, IHC, IF, ICC, IP
Primary Accession	<a href="#">P01106</a>
Host	Rabbit
Isotype	Rabbit IgG
Reactivity	Rat, Human, Mouse
Clonality	Monoclonal
Format	Liquid

**Description**

Anti-Phospho-c-Myc (S62) Rabbit Monoclonal Antibody . Tested in WB, IHC, ICC/IF, IP applications. This antibody reacts with Human, Mouse, Rat.

**Anti-Phospho-c-Myc (S62) Rabbit Monoclonal Antibody - Additional Information**

**Gene ID** 4609

**Other Names**

Myc proto-oncogene protein, Class E basic helix-loop-helix protein 39, bHLHe39, Proto-oncogene c-Myc, Transcription factor p64, MYC, BHLHE39

**Calculated MW**

48804 MW KDa

**Application Details**

WB 1:500-1:2000<br>IHC 1:50-1:200<br>ICC/IF 100-1:500<br>IP 1:50

**Subcellular Localization**

Nucleus, nucleoplasm. Nucleus, nucleolus.

**Contents**

Rabbit IgG in phosphate buffered saline, pH 7.4, 150mM NaCl, 0.02% sodium azide and 50% glycerol, 0.4-0.5mg/ml BSA.

**Immunogen**

A synthesized peptide derived from human Phospho-c-Myc (S62)

**Purification**

Affinity-chromatography

**Storage**

Store at -20°C for one year. For short term storage and frequent use, store at 4°C for up to one month. Avoid repeated freeze-thaw cycles.

**Anti-Phospho-c-Myc (S62) Rabbit Monoclonal Antibody - Protein Information**

**Name** MYC**Synonyms** BHLHE39**Function**

Transcription factor that binds DNA in a non-specific manner, yet also specifically recognizes the core sequence 5'-CAC[GA]TG-3' (PubMed:<a href="http://www.uniprot.org/citations/24940000" target="\_blank">24940000</a>, PubMed:<a href="http://www.uniprot.org/citations/25956029" target="\_blank">25956029</a>). Activates the transcription of growth-related genes (PubMed:<a href="http://www.uniprot.org/citations/24940000" target="\_blank">24940000</a>, PubMed:<a href="http://www.uniprot.org/citations/25956029" target="\_blank">25956029</a>). Binds to the VEGFA promoter, promoting VEGFA production and subsequent sprouting angiogenesis (PubMed:<a href="http://www.uniprot.org/citations/24940000" target="\_blank">24940000</a>, PubMed:<a href="http://www.uniprot.org/citations/25956029" target="\_blank">25956029</a>). Regulator of somatic reprogramming, controls self-renewal of embryonic stem cells (By similarity). Functions with TAF6L to activate target gene expression through RNA polymerase II pause release (By similarity). Positively regulates transcription of HNRNPA1, HNRNPA2 and PTBP1 which in turn regulate splicing of pyruvate kinase PKM by binding repressively to sequences flanking PKM exon 9, inhibiting exon 9 inclusion and resulting in exon 10 inclusion and production of the PKM M2 isoform (PubMed:<a href="http://www.uniprot.org/citations/20010808" target="\_blank">20010808</a>).

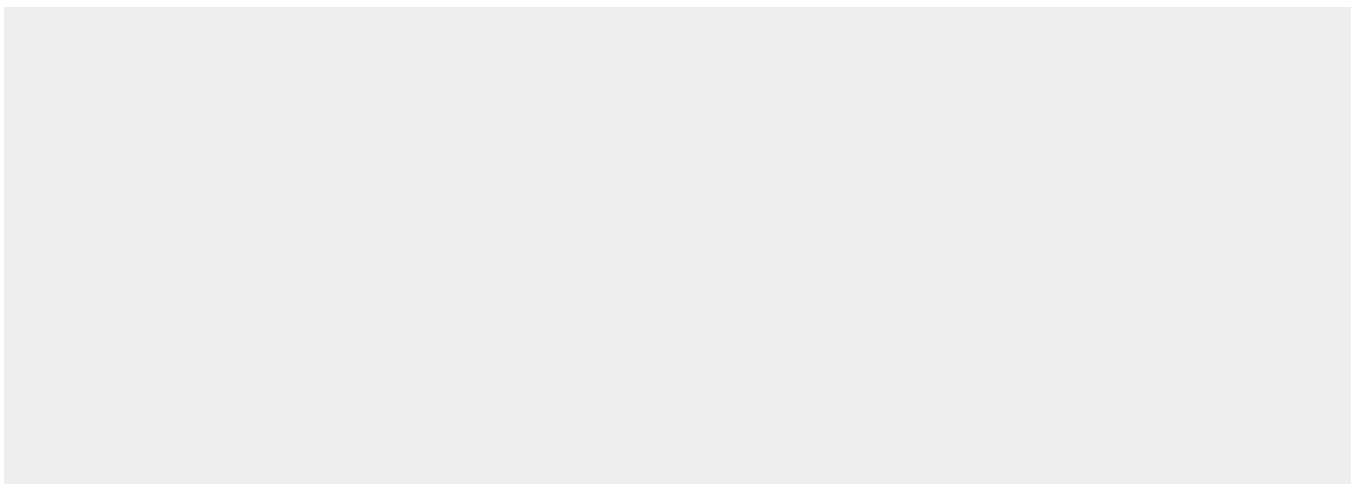
**Cellular Location**

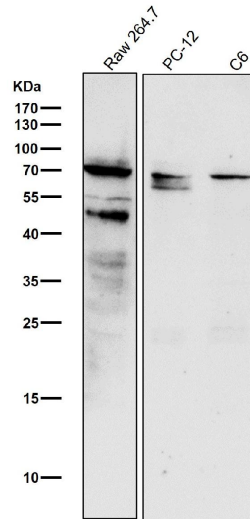
Nucleus, nucleoplasm. Nucleus, nucleolus. Nucleus. Cytoplasm Note=Localization to the nucleolus is dependent on HEATR1

**Anti-Phospho-c-Myc (S62) Rabbit Monoclonal Antibody - Protocols**

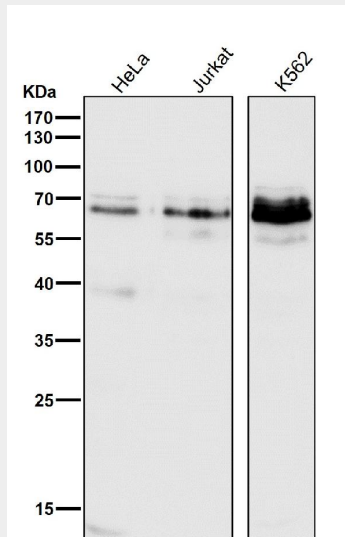
Provided below are standard protocols that you may find useful for product applications.

- [Western Blot](#)
- [Blocking Peptides](#)
- [Dot Blot](#)
- [Immunohistochemistry](#)
- [Immunofluorescence](#)
- [Immunoprecipitation](#)
- [Flow Cytometry](#)
- [Cell Culture](#)

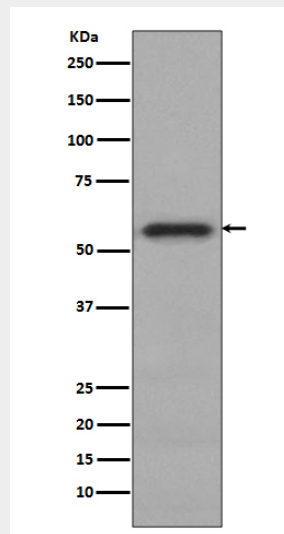
**Anti-Phospho-c-Myc (S62) Rabbit Monoclonal Antibody - Images**



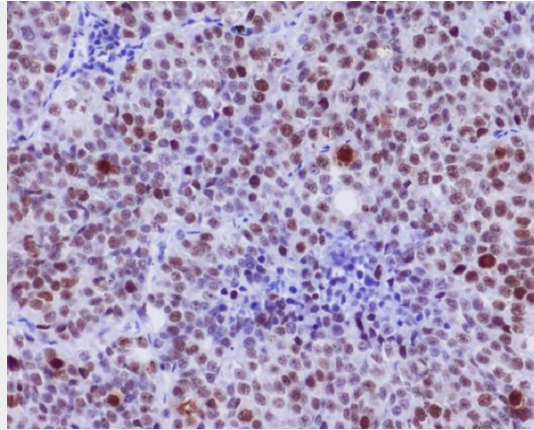
All lanes use the Antibody at 1:1K dilution for 1 hour at room temperature.



All lanes use the Antibody at 1:1K dilution for 1 hour at room temperature.



Western blot analysis of Phospho-c-Myc (S62) expression in HeLa cell lysate.



Immunohistochemical analysis of paraffin-embedded human lung carcinoma, using Phospho-c-Myc (S62) Antibody.