

## Anti-Phospho-POLR2A (S2) Rabbit Monoclonal Antibody Catalog # ABO13153

### Specification

---

#### Anti-Phospho-POLR2A (S2) Rabbit Monoclonal Antibody - Product Information

Application	WB, IHC, IF, ICC, IP, FC
Primary Accession	<a href="#">P24928</a>
Host	Rabbit
Isotype	Rabbit IgG
Reactivity	Rat, Human, Mouse
Clonality	Monoclonal
Format	Liquid

#### Description

Anti-Phospho-POLR2A (S2) Rabbit Monoclonal Antibody . Tested in WB, IHC, ICC/IF, IP, Flow Cytometry applications. This antibody reacts with Human, Mouse, Rat.

#### Anti-Phospho-POLR2A (S2) Rabbit Monoclonal Antibody - Additional Information

Gene ID 5430

#### Other Names

DNA-directed RNA polymerase II subunit RPB1, RNA polymerase II subunit B1, 2.7.7.6, 3'-5' exoribonuclease, 3.1.13.-, DNA-directed RNA polymerase II subunit A, DNA-directed RNA polymerase III largest subunit, RNA-directed RNA polymerase II subunit RPB1, 2.7.7.48, POLR2A ([http://www.genenames.org/cgi-bin/gene\\_symbol\\_report?hgnc\\_id=9187](http://www.genenames.org/cgi-bin/gene_symbol_report?hgnc_id=9187)), POLR2

#### Calculated MW

217176 MW KDa

#### Application Details

WB 1:500-1:2000<br>IHC 1:50-1:200<br>ICC/IF 1:50-1:200<br>IP 1:50<br>FC 1:50

#### Subcellular Localization

Nucleus.

#### Contents

Rabbit IgG in phosphate buffered saline, pH 7.4, 150mM NaCl, 0.02% sodium azide and 50% glycerol, 0.4-0.5mg/ml BSA.

#### Immunogen

A synthesized peptide derived from human POLR2A

#### Purification

Affinity-chromatography

#### Storage

Store at -20°C for one year. For short term storage and frequent use, store at 4°C for up to one month. Avoid repeated

## freeze-thaw cycles.

### Anti-Phospho-POLR2A (S2) Rabbit Monoclonal Antibody - Protein Information

Name POLR2A ([HGNC:9187](#))

Synonyms POLR2

#### Function

Catalytic core component of RNA polymerase II (Pol II), a DNA-dependent RNA polymerase which synthesizes mRNA precursors and many functional non-coding RNAs using the four ribonucleoside triphosphates as substrates (By similarity) (PubMed:<a href="http://www.uniprot.org/citations/23748380" target="\_blank">23748380</a>, PubMed:<a href="http://www.uniprot.org/citations/27193682" target="\_blank">27193682</a>, PubMed:<a href="http://www.uniprot.org/citations/30190596" target="\_blank">30190596</a>, PubMed:<a href="http://www.uniprot.org/citations/9852112" target="\_blank">9852112</a>). Pol II-mediated transcription cycle proceeds through transcription initiation, transcription elongation and transcription termination stages. During transcription initiation, Pol II pre-initiation complex (PIC) is recruited to DNA promoters, with focused-type promoters containing either the initiator (Inr) element, or the TATA-box found in cell-type specific genes and dispersed-type promoters that often contain hypomethylated CpG islands usually found in housekeeping genes. Once the polymerase has escaped from the promoter it enters the elongation phase during which RNA is actively polymerized, based on complementarity with the template DNA strand. Transcription termination involves the release of the RNA transcript and polymerase from the DNA (By similarity) (PubMed:<a href="http://www.uniprot.org/citations/23748380" target="\_blank">23748380</a>, PubMed:<a href="http://www.uniprot.org/citations/27193682" target="\_blank">27193682</a>, PubMed:<a href="http://www.uniprot.org/citations/28108474" target="\_blank">28108474</a>, PubMed:<a href="http://www.uniprot.org/citations/30190596" target="\_blank">30190596</a>, PubMed:<a href="http://www.uniprot.org/citations/9852112" target="\_blank">9852112</a>). Forms Pol II active center together with the second largest subunit POLR2B/RPB2. Appends one nucleotide at a time to the 3' end of the nascent RNA, with POLR2A/RPB1 most likely contributing a Mg(2+)-coordinating DxDGD motif, and POLR2B/RPB2 participating in the coordination of a second Mg(2+) ion and providing lysine residues believed to facilitate Watson-Crick base pairing between the incoming nucleotide and template base. Typically, Mg(2+) ions direct a 5' nucleoside triphosphate to form a phosphodiester bond with the 3' hydroxyl of the preceding nucleotide of the nascent RNA, with the elimination of pyrophosphate. The reversible pyrophosphorolysis can occur at high pyrophosphate concentrations (By similarity) (PubMed:<a href="http://www.uniprot.org/citations/30190596" target="\_blank">30190596</a>, PubMed:<a href="http://www.uniprot.org/citations/8381534" target="\_blank">8381534</a>, PubMed:<a href="http://www.uniprot.org/citations/9852112" target="\_blank">9852112</a>). Can proofread the nascent RNA transcript by means of a 3' -> 5' exonuclease activity. If a ribonucleotide is mis-incorporated, backtracks along the template DNA and cleaves the phosphodiester bond releasing the mis-incorporated 5'-ribonucleotide (By similarity) (PubMed:<a href="http://www.uniprot.org/citations/8381534" target="\_blank">8381534</a>). Through its unique C-terminal domain (CTD, 52 heptapeptide tandem repeats) serves as a platform for assembly of factors that regulate transcription initiation, elongation and termination. CTD phosphorylation on Ser-5 mediates Pol II promoter escape, whereas phosphorylation on Ser-2 is required for Pol II pause release during transcription elongation and further pre-mRNA processing. Additionally, the regulation of gene expression levels depends on the balance between methylation and acetylation levels of the CTD-lysines. Initiation or early elongation steps of transcription of growth-factor-induced immediate early genes are regulated by the acetylation status of the CTD. Methylation and dimethylation have a repressive effect on target genes expression. Cooperates with mRNA splicing machinery in co-transcriptional 5'-end capping and co-transcriptional splicing of pre-mRNA (By similarity) (PubMed:<a href="http://www.uniprot.org/citations/24207025" target="\_blank">24207025</a>, PubMed:<a href="http://www.uniprot.org/citations/26124092" target="\_blank">26124092</a>).

### Cellular Location

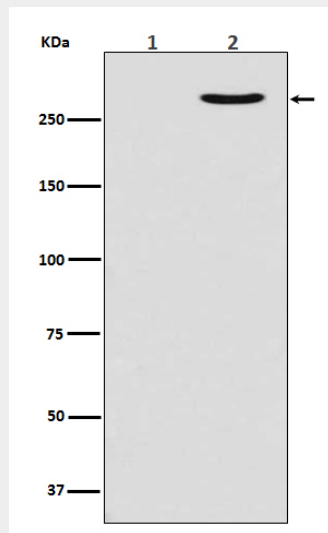
Nucleus. Cytoplasm. Chromosome. Note=Hypophosphorylated form is mainly found in the cytoplasm, while the hyperphosphorylated and active form is nuclear (PubMed:26566685). Co-localizes with kinase SRPK2 and helicase DDX23 at chromatin loci where unscheduled R-loops form (PubMed:28076779).

### Anti-Phospho-POLR2A (S2) Rabbit Monoclonal Antibody - Protocols

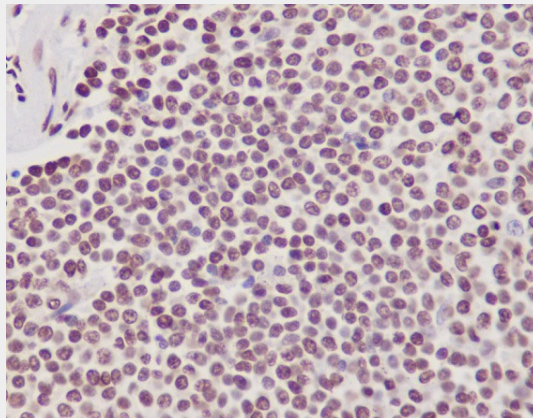
Provided below are standard protocols that you may find useful for product applications.

- [Western Blot](#)
- [Blocking Peptides](#)
- [Dot Blot](#)
- [Immunohistochemistry](#)
- [Immunofluorescence](#)
- [Immunoprecipitation](#)
- [Flow Cytometry](#)
- [Cell Culture](#)

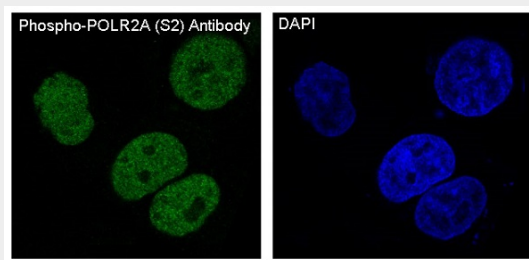
### Anti-Phospho-POLR2A (S2) Rabbit Monoclonal Antibody - Images



Western blot analysis of Phospho-POLR2A (S2) expression in (1) MCF7 cell lysate treated with Lambda Phosphatase; (2) MCF7 cell lysate.



Immunohistochemical analysis of paraffin-embedded human spleen, using Phospho-POLR2A (S2) Antibody.



Immunofluorescent analysis of MCF7 cells, using Phospho-POLR2A (S2) Antibody.