

Anti-Phospho-PKA R2 (S99) PRKAR2A Rabbit Monoclonal Antibody
Catalog # ABO13156**Specification****Anti-Phospho-PKA R2 (S99) PRKAR2A Rabbit Monoclonal Antibody - Product Information**

Application	WB, IHC, IF, ICC, IP
Primary Accession	P13861
Host	Rabbit
Isotype	Rabbit IgG
Reactivity	Rat, Human, Mouse
Clonality	Monoclonal
Format	Liquid

Description

Anti-Phospho-PKA R2 (S99) PRKAR2A Rabbit Monoclonal Antibody . Tested in WB, IHC, ICC/IF, IP applications. This antibody reacts with Human, Mouse, Rat.

Anti-Phospho-PKA R2 (S99) PRKAR2A Rabbit Monoclonal Antibody - Additional Information

Gene ID 5576

Other Names

cAMP-dependent protein kinase type II-alpha regulatory subunit, PRKAR2A, PKR2, PRKAR2

Calculated MW

45518 MW KDa

Application Details

WB 1:500-1:2000
IHC 1:50-1:200
ICC/IF 1:50-1:200
IP 1:50

Subcellular Localization

Cytoplasm. Cell membrane. Colocalizes with PJA2 in the cytoplasm and the cell membrane.

Tissue Specificity

Four types of regulatory chains are found: I- alpha, I-beta, II-alpha, and II-beta. Their expression varies among tissues and is in some cases constitutive and in others inducible.

Contents

Rabbit IgG in phosphate buffered saline, pH 7.4, 150mM NaCl, 0.02% sodium azide and 50% glycerol, 0.4-0.5mg/ml BSA.

Immunogen

A synthesized peptide derived from human Phospho-PKA R2 (S99)

Purification

Affinity-chromatography

Storage

Store at -20°C for one year. For short term storage and frequent use, store at 4°C for

**up to one month. Avoid repeated
freeze-thaw cycles.**

Anti-Phospho-PKA R2 (S99) PRKAR2A Rabbit Monoclonal Antibody - Protein Information

Name PRKAR2A

Synonyms PKR2, PRKAR2

Function

Regulatory subunit of the cAMP-dependent protein kinases involved in cAMP signaling in cells. Type II regulatory chains mediate membrane association by binding to anchoring proteins, including the MAP2 kinase.

Cellular Location

Cytoplasm. Cell membrane. Note=Colocalizes with PJA2 in the cytoplasm and the cell membrane

Tissue Location

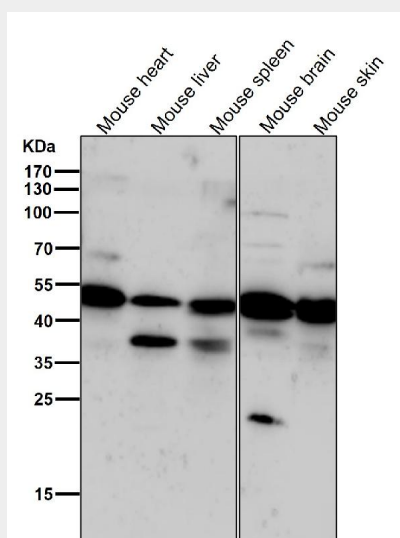
Four types of regulatory chains are found: I-alpha, I-beta, II-alpha, and II-beta. Their expression varies among tissues and is in some cases constitutive and in others inducible

Anti-Phospho-PKA R2 (S99) PRKAR2A Rabbit Monoclonal Antibody - Protocols

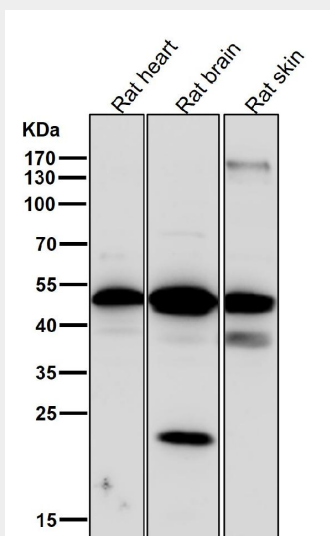
Provided below are standard protocols that you may find useful for product applications.

- [Western Blot](#)
- [Blocking Peptides](#)
- [Dot Blot](#)
- [Immunohistochemistry](#)
- [Immunofluorescence](#)
- [Immunoprecipitation](#)
- [Flow Cytometry](#)
- [Cell Culture](#)

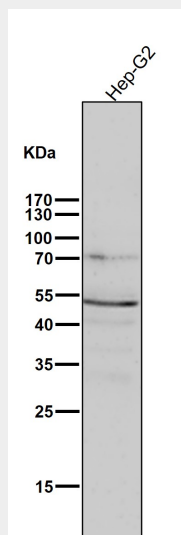
Anti-Phospho-PKA R2 (S99) PRKAR2A Rabbit Monoclonal Antibody - Images



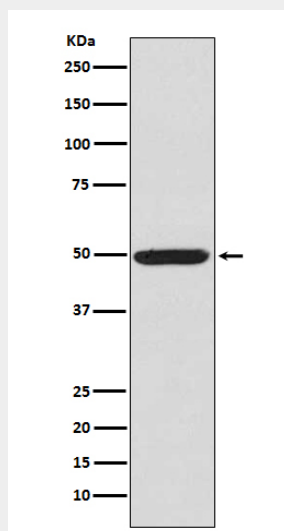
All lanes use the Antibody at 1:1K dilution for 1 hour at room temperature.



All lanes use the Antibody at 1:1K dilution for 1 hour at room temperature.



All lanes use the Antibody at 1:1K dilution for 1 hour at room temperature.



Western blot analysis of Phospho-PKA R2 (Ser99) in K562 cell lysate.