

**Anti-Phospho-STAT3 (S727) Rabbit Monoclonal Antibody**  
**Catalog # ABO13159****Specification****Anti-Phospho-STAT3 (S727) Rabbit Monoclonal Antibody - Product Information**

Application	WB, IHC, IF, ICC, IP
Primary Accession	<a href="#">P40763</a>
Host	Rabbit
Isotype	Rabbit IgG
Reactivity	Rat, Human, Mouse
Clonality	Monoclonal
Format	Liquid

**Description**

Anti-Phospho-STAT3 (S727) Rabbit Monoclonal Antibody . Tested in WB, IHC, ICC/IF, IP applications. This antibody reacts with Human, Mouse, Rat.

**Anti-Phospho-STAT3 (S727) Rabbit Monoclonal Antibody - Additional Information**

**Gene ID** 6774

**Other Names**

Signal transducer and activator of transcription 3, Acute-phase response factor, STAT3  
{ECO:0000303|PubMed:9630560, ECO:0000312|HGNC:HGNC:11364}

**Calculated MW**

88068 MW KDa

**Application Details**

WB 1:1000-1:2000<br>IHC 1:50-1:200<br>ICC/IF 1:50-1:200<br>IP 1:50

**Subcellular Localization**

Cytoplasm. Nucleus. Shuttles between the nucleus and the cytoplasm. Translocated into the nucleus upon tyrosine phosphorylation and dimerization, in response to signaling by activated FGFR1, FGFR2, FGFR3 or FGFR4. Constitutive nuclear presence is independent of tyrosine phosphorylation. Predominantly present in the cytoplasm without stimuli. Upon leukemia inhibitory factor (LIF) stimulation, accumulates in the nucleus. The complex composed of BART and ARL2 plays an important role in the nuclear translocation and retention of STAT3. Identified in a complex with LYN and PAG1.

**Tissue Specificity**

Heart, brain, placenta, lung, liver, skeletal muscle, kidney and pancreas.

**Contents**

Rabbit IgG in phosphate buffered saline, pH 7.4, 150mM NaCl, 0.02% sodium azide and 50% glycerol, 0.4-0.5mg/ml BSA.

**Immunogen**

A synthesized peptide derived from human Phospho-STAT3 (S727)

**Purification**

Affinity-chromatography

**Storage****Store at -20°C for one year. For short term storage and frequent use, store at 4°C for up to one month. Avoid repeated freeze-thaw cycles.****Anti-Phospho-STAT3 (S727) Rabbit Monoclonal Antibody - Protein Information****Name** STAT3 {ECO:0000303|PubMed:9630560, ECO:0000312|HGNC:HGNC:11364}**Function**

Signal transducer and transcription activator that mediates cellular responses to interleukins, KITLG/SCF, LEP and other growth factors (PubMed:<a href="http://www.uniprot.org/citations/10688651" target="\_blank">10688651</a>, PubMed:<a href="http://www.uniprot.org/citations/12359225" target="\_blank">12359225</a>, PubMed:<a href="http://www.uniprot.org/citations/12873986" target="\_blank">12873986</a>, PubMed:<a href="http://www.uniprot.org/citations/15194700" target="\_blank">15194700</a>, PubMed:<a href="http://www.uniprot.org/citations/15653507" target="\_blank">15653507</a>, PubMed:<a href="http://www.uniprot.org/citations/16285960" target="\_blank">16285960</a>, PubMed:<a href="http://www.uniprot.org/citations/17344214" target="\_blank">17344214</a>, PubMed:<a href="http://www.uniprot.org/citations/18242580" target="\_blank">18242580</a>, PubMed:<a href="http://www.uniprot.org/citations/18782771" target="\_blank">18782771</a>, PubMed:<a href="http://www.uniprot.org/citations/22306293" target="\_blank">22306293</a>, PubMed:<a href="http://www.uniprot.org/citations/23084476" target="\_blank">23084476</a>, PubMed:<a href="http://www.uniprot.org/citations/28262505" target="\_blank">28262505</a>, PubMed:<a href="http://www.uniprot.org/citations/32929201" target="\_blank">32929201</a>, PubMed:<a href="http://www.uniprot.org/citations/38404237" target="\_blank">38404237</a>). Once activated, recruits coactivators, such as NCOA1 or MED1, to the promoter region of the target gene (PubMed:<a href="http://www.uniprot.org/citations/15653507" target="\_blank">15653507</a>, PubMed:<a href="http://www.uniprot.org/citations/16285960" target="\_blank">16285960</a>, PubMed:<a href="http://www.uniprot.org/citations/17344214" target="\_blank">17344214</a>, PubMed:<a href="http://www.uniprot.org/citations/18782771" target="\_blank">18782771</a>, PubMed:<a href="http://www.uniprot.org/citations/28262505" target="\_blank">28262505</a>, PubMed:<a href="http://www.uniprot.org/citations/32929201" target="\_blank">32929201</a>). May mediate cellular responses to activated FGFR1, FGFR2, FGFR3 and FGFR4 (PubMed:<a href="http://www.uniprot.org/citations/12873986" target="\_blank">12873986</a>). Upon activation of IL6ST/gp130 signaling by interleukin-6 (IL6), binds to the IL6-responsive elements identified in the promoters of various acute-phase protein genes (PubMed:<a href="http://www.uniprot.org/citations/12359225" target="\_blank">12359225</a>). Activated by IL31 through IL31RA (PubMed:<a href="http://www.uniprot.org/citations/15194700" target="\_blank">15194700</a>). Acts as a regulator of inflammatory response by regulating differentiation of naive CD4(+) T-cells into T-helper Th17 or regulatory T-cells (Treg): acetylation promotes its transcription activity and cell differentiation while deacetylation and oxidation of lysine residues by LOXL3 inhibits differentiation (PubMed:<a href="http://www.uniprot.org/citations/28065600" target="\_blank">28065600</a>, PubMed:<a href="http://www.uniprot.org/citations/28262505" target="\_blank">28262505</a>). Involved in cell cycle regulation by inducing the expression of key genes for the progression from G1 to S phase, such as CCND1 (PubMed:<a href="http://www.uniprot.org/citations/17344214" target="\_blank">17344214</a>). Mediates the effects of LEP on melanocortin production, body energy homeostasis and lactation (By similarity). May play an apoptotic role by transactivating BIRC5 expression under LEP activation (PubMed:<a href="http://www.uniprot.org/citations/18242580" target="\_blank">18242580</a>). Cytoplasmic STAT3 represses macroautophagy by inhibiting EIF2AK2/PKR activity (PubMed:<a href="http://www.uniprot.org/citations/23084476" target="\_blank">23084476</a>). Plays a

crucial role in basal beta cell functions, such as regulation of insulin secretion (By similarity). Following JAK/STAT signaling activation and as part of a complex with NFATC3 and NFATC4, binds to the alpha-beta E4 promoter region of CRYAB and activates transcription in cardiomyocytes (By similarity).

#### Cellular Location

Cytoplasm. Nucleus Note=Shuttles between the nucleus and the cytoplasm (PubMed:29162862) Translocated into the nucleus upon tyrosine phosphorylation and dimerization, in response to signaling by activated FGFR1, FGFR2, FGFR3 or FGFR4 (PubMed:15653507, PubMed:16285960). Constitutive nuclear presence is independent of tyrosine phosphorylation. Predominantly present in the cytoplasm without stimuli. Upon leukemia inhibitory factor (LIF) stimulation, accumulates in the nucleus. The complex composed of BART and ARL2 plays an important role in the nuclear translocation and retention of STAT3. Identified in a complex with LYN and PAG1. Translocates to the nucleus in the presence of EDN1 (By similarity). {ECO:0000250|UniProtKB:P52631, ECO:0000269|PubMed:15653507, ECO:0000269|PubMed:16285960, ECO:0000269|PubMed:29162862}

#### Tissue Location

Heart, brain, placenta, lung, liver, skeletal muscle, kidney and pancreas. Expressed in naive CD4(+) T cells as well as T-helper Th17, Th1 and Th2 cells (PubMed:31899195)

### Anti-Phospho-STAT3 (S727) Rabbit Monoclonal Antibody - Protocols

Provided below are standard protocols that you may find useful for product applications.

- [Western Blot](#)
- [Blocking Peptides](#)
- [Dot Blot](#)
- [Immunohistochemistry](#)
- [Immunofluorescence](#)
- [Immunoprecipitation](#)
- [Flow Cytometry](#)
- [Cell Culture](#)

### Anti-Phospho-STAT3 (S727) Rabbit Monoclonal Antibody - Images

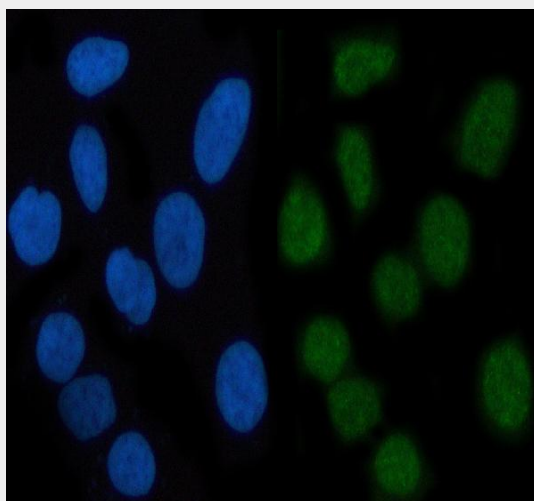
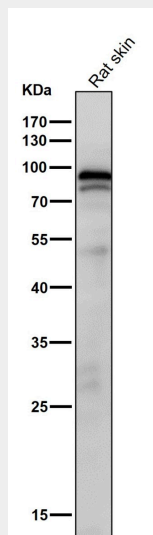
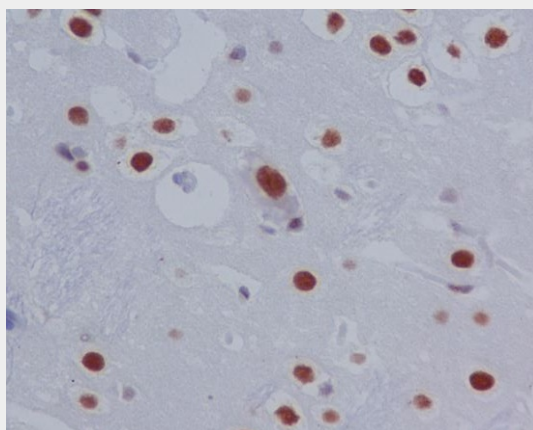


Figure 2. IF analysis of STAT3 using anti-STAT3 antibody (P00007-1). STAT3 was detected in immunocytochemical section of Hela cell. Enzyme antigen retrieval was

performed using IHC enzyme antigen retrieval reagent (AR0022) for 15 mins. The cells were blocked with 10% goat serum. And then incubated at 1:50 with rabbit anti-STAT3 Antibody (P00007-1) overnight at 4°C. DyLight®488 Conjugated Goat Anti-Rabbit IgG (BA1127) was used as secondary antibody at 1:500 dilution and incubated for 30 minutes at 37°C. The section was counterstained with DAPI. Visualize using a fluorescence microscope and filter sets appropriate for the label used.



All lanes use the Antibody at 1:1K dilution for 1 hour at room temperature.



Immunohistochemical analysis of paraffin-embedded rat brain, using Phospho-STAT3 (S727) Antibody.