

Anti-Phospho-GATA3 (S308) Rabbit Monoclonal Antibody
Catalog # ABO13162**Specification**

Anti-Phospho-GATA3 (S308) Rabbit Monoclonal Antibody - Product Information

Application	WB, IHC, IP
Primary Accession	P23771
Host	Rabbit
Isotype	Rabbit IgG
Reactivity	Human
Clonality	Monoclonal
Format	Liquid

Description

Anti-Phospho-GATA3 (S308) Rabbit Monoclonal Antibody . Tested in WB, IHC, IP applications. This antibody reacts with Human.

Anti-Phospho-GATA3 (S308) Rabbit Monoclonal Antibody - Additional Information

Gene ID 2625

Other Names

Trans-acting T-cell-specific transcription factor GATA-3, GATA-binding factor 3, GATA3

Calculated MW

47916 MW KDa

Application Details

WB 1:500-1:2000
IHC 1:50-1:100
IP 1:50

Subcellular Localization

Nucleus.

Tissue Specificity

T-cells and endothelial cells.

Contents

Rabbit IgG in phosphate buffered saline, pH 7.4, 150mM NaCl, 0.02% sodium azide and 50% glycerol, 0.4-0.5mg/ml BSA.

Immunogen

A synthesized peptide derived from human Phospho-GATA3 (S308)

Purification

Affinity-chromatography

Storage

Store at -20°C for one year. For short term storage and frequent use, store at 4°C for up to one month. Avoid repeated freeze-thaw cycles.

Anti-Phospho-GATA3 (S308) Rabbit Monoclonal Antibody - Protein Information

Name GATA3

Function

Transcriptional activator which binds to the enhancer of the T-cell receptor alpha and delta genes. Binds to the consensus sequence 5'-AGATAG-3'. Required for the T-helper 2 (Th2) differentiation process following immune and inflammatory responses. Positively regulates ASB2 expression (By similarity). Coordinates macrophage transcriptional activation and UCP2-dependent metabolic reprogramming in response to IL33. Upon tissue injury, acts downstream of IL33 signaling to drive differentiation of inflammation-resolving alternatively activated macrophages.

Cellular Location

Nucleus.

Tissue Location

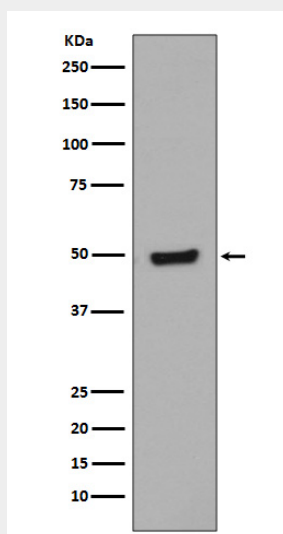
T-cells and endothelial cells.

Anti-Phospho-GATA3 (S308) Rabbit Monoclonal Antibody - Protocols

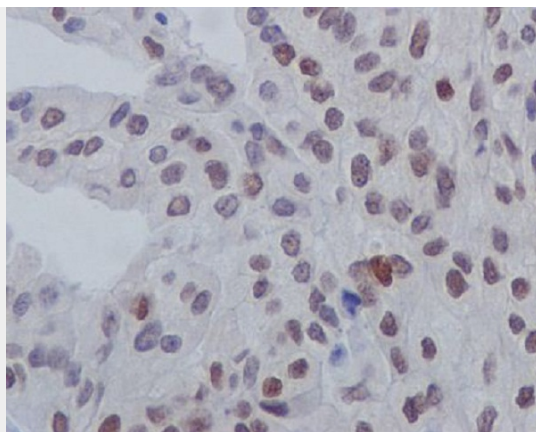
Provided below are standard protocols that you may find useful for product applications.

- [Western Blot](#)
- [Blocking Peptides](#)
- [Dot Blot](#)
- [Immunohistochemistry](#)
- [Immunofluorescence](#)
- [Immunoprecipitation](#)
- [Flow Cytometry](#)
- [Cell Culture](#)

Anti-Phospho-GATA3 (S308) Rabbit Monoclonal Antibody - Images



Western blot analysis of Phospho-GATA3 (S308) Jurkat cell lysate treated with Bromo-cAMP.



Immunohistochemical analysis of paraffin-embedded human bladder cancer, using Phospho-GATA3 (S308) Antibody.