

Anti-Phospho-Paxillin (Y118) PXN Rabbit Monoclonal Antibody Catalog # ABO13185

Specification

Anti-Phospho-Paxillin (Y118) PXN Rabbit Monoclonal Antibody - Product Information

Application	WB
Primary Accession	P49023
Host	Rabbit
Isotype	Rabbit IgG
Reactivity	Rat, Human, Mouse
Clonality	Monoclonal
Format	Liquid

Description

Anti-Phospho-Paxillin (Y118) PXN Rabbit Monoclonal Antibody . Tested in WB application. This antibody reacts with Human, Mouse, Rat.

Anti-Phospho-Paxillin (Y118) PXN Rabbit Monoclonal Antibody - Additional Information

Gene ID 5829

Other Names

Paxillin, PXN

Calculated MW

64505 MW KDa

Application Details

WB 1:1000-1:2000

Subcellular Localization

Cytoplasm, cytoskeleton. Cell junction, focal adhesion. Cytoplasm, cell cortex. Colocalizes with integrins at the cell periphery..

Contents

Rabbit IgG in phosphate buffered saline, pH 7.4, 150mM NaCl, 0.02% sodium azide and 50% glycerol, 0.4-0.5mg/ml BSA.

Immunogen

A synthesized peptide derived from human Paxillin

Purification

Affinity-chromatography

Storage

Store at -20°C for one year. For short term storage and frequent use, store at 4°C for up to one month. Avoid repeated freeze-thaw cycles.

Anti-Phospho-Paxillin (Y118) PXN Rabbit Monoclonal Antibody - Protein Information

Name PXN**Function**

Cytoskeletal protein involved in actin-membrane attachment at sites of cell adhesion to the extracellular matrix (focal adhesion). Recruits other proteins such as TRIM15 to focal adhesion.

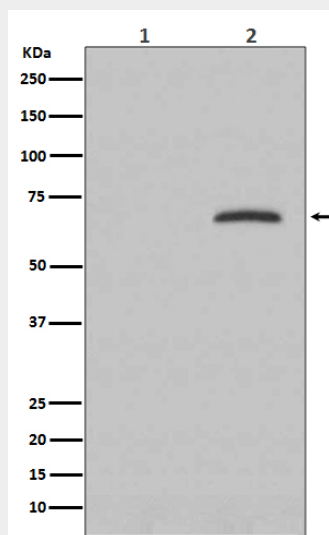
Cellular Location

Cytoplasm, cytoskeleton. Cell junction, focal adhesion. Cytoplasm, cell cortex {ECO:0000250|UniProtKB:Q8VI36}. Note=Colocalizes with integrins at the cell periphery. Colocalize with PXN to membrane ruffles and the leading edge of migrating cells (PubMed:23128389). {ECO:0000250, ECO:0000269|PubMed:23128389}

Anti-Phospho-Paxillin (Y118) PXN Rabbit Monoclonal Antibody - Protocols

Provided below are standard protocols that you may find useful for product applications.

- [Western Blot](#)
- [Blocking Peptides](#)
- [Dot Blot](#)
- [Immunohistochemistry](#)
- [Immunofluorescence](#)
- [Immunoprecipitation](#)
- [Flow Cytometry](#)
- [Cell Culture](#)

Anti-Phospho-Paxillin (Y118) PXN Rabbit Monoclonal Antibody - Images

Western blot analysis of Phospho-Paxillin (Y118) expression in (1) HeLa cell lysate; (2) HeLa cell treated with pervanadate.