

**Anti-Phospho-Glycogen synthase 1 (S641) GYS1 Rabbit Monoclonal Antibody**  
**Catalog # ABO13210****Specification****Anti-Phospho-Glycogen synthase 1 (S641) GYS1 Rabbit Monoclonal Antibody - Product Information**

Application	WB, IHC, IF, ICC, IP
Primary Accession	<a href="#">P13807</a>
Host	Rabbit
Isotype	Rabbit IgG
Reactivity	Human, Mouse
Clonality	Monoclonal
Format	Liquid

**Description**

Anti-Phospho-Glycogen synthase 1 (S641) GYS1 Rabbit Monoclonal Antibody . Tested in WB, IHC, ICC/IF, IP applications. This antibody reacts with Human, Mouse.

**Anti-Phospho-Glycogen synthase 1 (S641) GYS1 Rabbit Monoclonal Antibody - Additional Information**

**Gene ID** 2997

**Other Names**

Glycogen [starch] synthase, muscle, 2.4.1.11, GYS1 ([http://www.genenames.org/cgi-bin/gene\\_symbol\\_report?hgnc\\_id=4706](http://www.genenames.org/cgi-bin/gene_symbol_report?hgnc_id=4706)), GYS

**Calculated MW**

83786 MW KDa

**Application Details**

WB 1:1000-1:2000<br>IHC 1:50-1:200<br>ICC/IF 1:50-1:200<br>IP 1:50

**Contents**

Rabbit IgG in phosphate buffered saline, pH 7.4, 150mM NaCl, 0.02% sodium azide and 50% glycerol, 0.4-0.5mg/ml BSA.

**Immunogen**

A synthesized peptide derived from human Phospho-Glycogen synthase 1 (S641)

**Purification**

Affinity-chromatography

**Storage**

**Store at -20°C for one year. For short term storage and frequent use, store at 4°C for up to one month. Avoid repeated freeze-thaw cycles.**

**Anti-Phospho-Glycogen synthase 1 (S641) GYS1 Rabbit Monoclonal Antibody - Protein**

## Information

**Name** GYS1 ([HGNC:4706](#))

**Synonyms** GYS

### Function

Glycogen synthase participates in the glycogen biosynthetic process along with glycogenin and glycogen branching enzyme. Extends the primer composed of a few glucose units formed by glycogenin by adding new glucose units to it. In this context, glycogen synthase transfers the glycosyl residue from UDP-Glc to the non-reducing end of alpha-1,4-glucan.

### Tissue Location

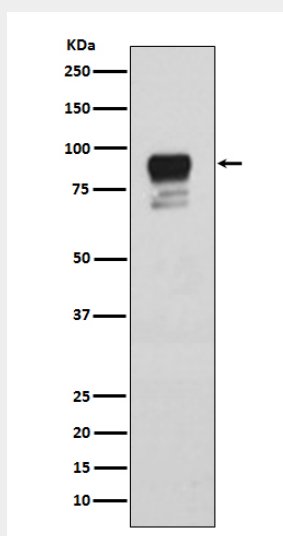
Expressed in skeletal muscle and most other cell types where glycogen is present.

## Anti-Phospho-Glycogen synthase 1 (S641) GYS1 Rabbit Monoclonal Antibody - Protocols

Provided below are standard protocols that you may find useful for product applications.

- [Western Blot](#)
- [Blocking Peptides](#)
- [Dot Blot](#)
- [Immunohistochemistry](#)
- [Immunofluorescence](#)
- [Immunoprecipitation](#)
- [Flow Cytometry](#)
- [Cell Culture](#)

## Anti-Phospho-Glycogen synthase 1 (S641) GYS1 Rabbit Monoclonal Antibody - Images



Western blot analysis of Phospho-Glycogen synthase 1 (S641) expression in HeLa cell lysate.