

**Anti-5T4 TPBG Rabbit Monoclonal Antibody**  
**Catalog # ABO13237****Specification**

---

**Anti-5T4 TPBG Rabbit Monoclonal Antibody - Product Information**

Application	WB, IP
Primary Accession	<a href="#">Q13641</a>
Host	Rabbit
Isotype	Rabbit IgG
Reactivity	Rat, Human, Mouse
Clonality	Monoclonal
Format	Liquid

**Description**

Anti-5T4 TPBG Rabbit Monoclonal Antibody . Tested in WB, IP applications. This antibody reacts with Human, Mouse, Rat.

**Anti-5T4 TPBG Rabbit Monoclonal Antibody - Additional Information**

**Gene ID** 7162

**Other Names**

Trophoblast glycoprotein, 5T4 oncofetal antigen, 5T4 oncofetal trophoblast glycoprotein, 5T4 oncotrophoblast glycoprotein, M6P1, Wnt-activated inhibitory factor 1, WAIF1, TPBG, 5T4

**Calculated MW**

46032 MW KDa

**Application Details**

WB 1:500-1:2000<br>IP 1:50

**Subcellular Localization**

Cell membrane ; Single-pass type I membrane protein.

**Tissue Specificity**

Expressed by all types of trophoblasts as early as 9 weeks of development. Specific for trophoblastic cells except for amniotic epithelium. In adult tissues, the expression is limited to a few epithelial cell types but is found on a variety of carcinoma.

**Contents**

Rabbit IgG in phosphate buffered saline, pH 7.4, 150mM NaCl, 0.02% sodium azide and 50% glycerol, 0.4-0.5mg/ml BSA.

**Immunogen**

A synthesized peptide derived from human 5T4

**Purification**

Affinity-chromatography

Storage

**Store at -20°C for one year. For short term**

**storage and frequent use, store at 4°C for up to one month. Avoid repeated freeze-thaw cycles.**

## **Anti-5T4 TPBG Rabbit Monoclonal Antibody - Protein Information**

**Name** TPBG

**Synonyms** 5T4

### **Function**

May function as an inhibitor of Wnt/beta-catenin signaling by indirectly interacting with LRP6 and blocking Wnt3a-dependent LRP6 internalization.

### **Cellular Location**

Cell membrane; Single-pass type I membrane protein

### **Tissue Location**

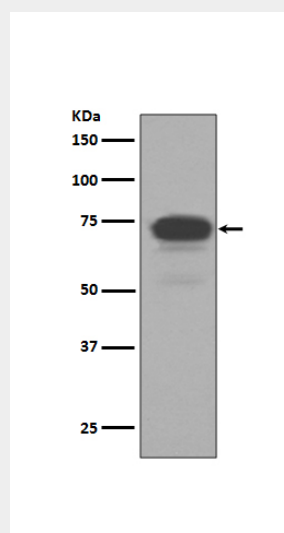
Expressed by all types of trophoblasts as early as 9 weeks of development. Specific for trophoblastic cells except for amniotic epithelium. In adult tissues, the expression is limited to a few epithelial cell types but is found on a variety of carcinoma

## **Anti-5T4 TPBG Rabbit Monoclonal Antibody - Protocols**

Provided below are standard protocols that you may find useful for product applications.

- [Western Blot](#)
- [Blocking Peptides](#)
- [Dot Blot](#)
- [Immunohistochemistry](#)
- [Immunofluorescence](#)
- [Immunoprecipitation](#)
- [Flow Cytometry](#)
- [Cell Culture](#)

## **Anti-5T4 TPBG Rabbit Monoclonal Antibody - Images**



Western blot analysis of 5T4 expression in MCF-7 cell lysate.