

Anti-SCF Rabbit Monoclonal Antibody
Catalog # ABO13254**Specification**

Anti-SCF Rabbit Monoclonal Antibody - Product Information

Application	WB, IHC, IF, ICC, FC
Primary Accession	P21583
Host	Rabbit
Isotype	Rabbit IgG
Reactivity	Human
Clonality	Monoclonal
Format	Liquid

Description

Anti-SCF Rabbit Monoclonal Antibody . Tested in WB, IHC, ICC/IF, Flow Cytometry applications. This antibody reacts with Human.

Anti-SCF Rabbit Monoclonal Antibody - Additional Information

Gene ID 4254

Other Names

Kit ligand, Mast cell growth factor, MGF, Stem cell factor, SCF, c-Kit ligand, Soluble KIT ligand, sKITLG, KITLG (http://www.genenames.org/cgi-bin/gene_symbol_report?hgnc_id=6343 target="_blank">HGNC:6343), MGF, SCF

Calculated MW

30899 MW KDa

Application Details

WB 1:500-1:2000
IHC 1:50-1:200
ICC/IF 1:50-1:200
FC 1:20

Subcellular Localization

Isoform 1: Cell membrane; Single-pass type I membrane protein.

Contents

Rabbit IgG in phosphate buffered saline, pH 7.4, 150mM NaCl, 0.02% sodium azide and 50% glycerol, 0.4-0.5mg/ml BSA.

Immunogen

A synthesized peptide derived from human SCF

Purification

Affinity-chromatography

Storage

Store at -20°C for one year. For short term storage and frequent use, store at 4°C for up to one month. Avoid repeated freeze-thaw cycles.

Anti-SCF Rabbit Monoclonal Antibody - Protein Information

Name KITLG ([HGNC:6343](#))

Synonyms MGF, SCF

Function

Ligand for the receptor-type protein-tyrosine kinase KIT. Plays an essential role in the regulation of cell survival and proliferation, hematopoiesis, stem cell maintenance, gametogenesis, mast cell development, migration and function, and in melanogenesis. KITLG/SCF binding can activate several signaling pathways. Promotes phosphorylation of PIK3R1, the regulatory subunit of phosphatidylinositol 3-kinase, and subsequent activation of the kinase AKT1. KITLG/SCF and KIT also transmit signals via GRB2 and activation of RAS, RAF1 and the MAP kinases MAPK1/ERK2 and/or MAPK3/ERK1. KITLG/SCF and KIT promote activation of STAT family members STAT1, STAT3 and STAT5. KITLG/SCF and KIT promote activation of PLCG1, leading to the production of the cellular signaling molecules diacylglycerol and inositol 1,4,5-trisphosphate. KITLG/SCF acts synergistically with other cytokines, probably interleukins.

Cellular Location

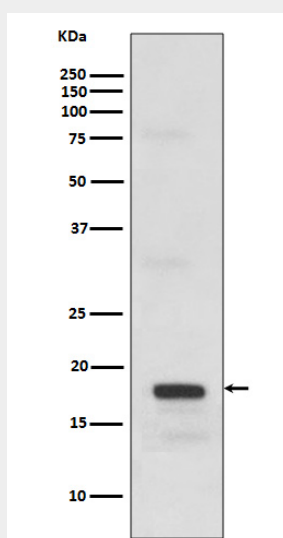
[Isoform 1]: Cell membrane; Single-pass type I membrane protein [Soluble KIT ligand]: Secreted.

Anti-SCF Rabbit Monoclonal Antibody - Protocols

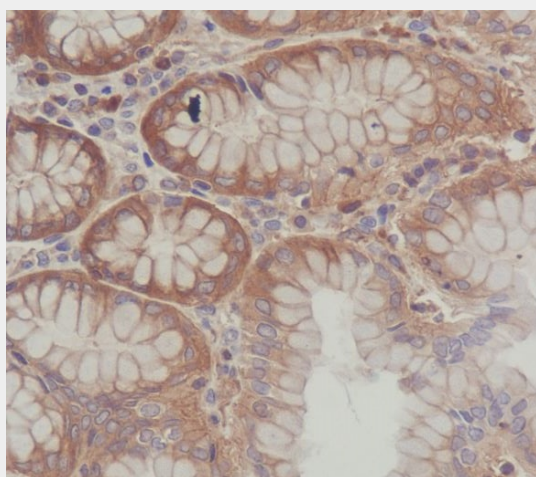
Provided below are standard protocols that you may find useful for product applications.

- [Western Blot](#)
- [Blocking Peptides](#)
- [Dot Blot](#)
- [Immunohistochemistry](#)
- [Immunofluorescence](#)
- [Immunoprecipitation](#)
- [Flow Cytometry](#)
- [Cell Culture](#)

Anti-SCF Rabbit Monoclonal Antibody - Images



Western blot analysis of SCF expression in recombinant protein.



Immunohistochemical analysis of paraffin-embedded human stomach, using SCF Antibody.