

Anti-BPI Rabbit Monoclonal Antibody
Catalog # ABO13258**Specification**

Anti-BPI Rabbit Monoclonal Antibody - Product Information

Application	WB, IF, ICC, FC
Primary Accession	P17213
Host	Rabbit
Isotype	Rabbit IgG
Reactivity	Human
Clonality	Monoclonal
Format	Liquid

Description

Anti-BPI Rabbit Monoclonal Antibody . Tested in WB, ICC/IF, Flow Cytometry applications. This antibody reacts with Human.

Anti-BPI Rabbit Monoclonal Antibody - Additional Information

Gene ID 671

Other Names

Bactericidal permeability-increasing protein, BPI, CAP 57, BPI

Calculated MW

53900 MW KDa

Application Details

WB 1:500-1:2000
ICC/IF 1:50-1:200
FC 1:50

Subcellular Localization

Secreted. Cytoplasmic granule membrane. Membrane-associated in polymorphonuclear Leukocytes (PMN) granules..

Tissue Specificity

Restricted to cells of the myeloid series.

Contents

Rabbit IgG in phosphate buffered saline, pH 7.4, 150mM NaCl, 0.02% sodium azide and 50% glycerol, 0.4-0.5mg/ml BSA.

Immunogen

A synthesized peptide derived from human BPI

Purification

Affinity-chromatography

Storage

Store at -20°C for one year. For short term storage and frequent use, store at 4°C for up to one month. Avoid repeated

freeze-thaw cycles.

Anti-BPI Rabbit Monoclonal Antibody - Protein Information

Name BPI

Function

The cytotoxic action of BPI is limited to many species of Gram-negative bacteria; this specificity may be explained by a strong affinity of the very basic N-terminal half for the negatively charged lipopolysaccharides that are unique to the Gram-negative bacterial outer envelope. Has antibacterial activity against the Gram-negative bacterium *P.aeruginosa*, this activity is inhibited by LPS from *P.aeruginosa*.

Cellular Location

Secreted. Cytoplasmic granule membrane Note=Membrane-associated in polymorphonuclear Leukocytes (PMN) granules.

Tissue Location

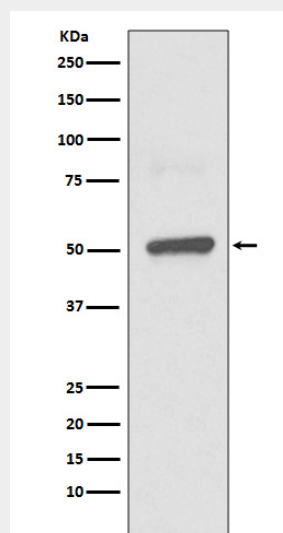
Restricted to cells of the myeloid series.

Anti-BPI Rabbit Monoclonal Antibody - Protocols

Provided below are standard protocols that you may find useful for product applications.

- [Western Blot](#)
- [Blocking Peptides](#)
- [Dot Blot](#)
- [Immunohistochemistry](#)
- [Immunofluorescence](#)
- [Immunoprecipitation](#)
- [Flow Cytometry](#)
- [Cell Culture](#)

Anti-BPI Rabbit Monoclonal Antibody - Images



Western blot analysis of BPI expression in THP1 lysate.