

Anti-VWF/Von Willebrand Factor Rabbit Monoclonal Antibody
Catalog # ABO13266**Specification**

Anti-VWF/Von Willebrand Factor Rabbit Monoclonal Antibody - Product Information

Application	WB, IHC
Primary Accession	P04275
Host	Rabbit
Isotype	Rabbit IgG
Reactivity	Human
Clonality	Monoclonal
Format	Liquid

Description

Anti-VWF/Von Willebrand Factor Rabbit Monoclonal Antibody . Tested in WB, IHC applications. This antibody reacts with Human.

Anti-VWF/Von Willebrand Factor Rabbit Monoclonal Antibody - Additional Information

Gene ID 7450

Other Names

von Willebrand factor, vWF, von Willebrand antigen 2, von Willebrand antigen II, VWF, F8VWF

Calculated MW

309265 MW KDa

Application Details

WB 1:500-1:2000
IHC 1:50-1:200

Subcellular Localization

Secreted. Secreted, extracellular space, extracellular matrix. Localized to storage granules.

Tissue Specificity

Plasma.

Contents

Rabbit IgG in phosphate buffered saline, pH 7.4, 150mM NaCl, 0.02% sodium azide and 50% glycerol, 0.4-0.5mg/ml BSA.

Immunogen

A synthesized peptide derived from human VWF

Purification

Affinity-chromatography

Storage

Store at -20°C for one year. For short term storage and frequent use, store at 4°C for up to one month. Avoid repeated freeze-thaw cycles.

Anti-VWF/Von Willebrand Factor Rabbit Monoclonal Antibody - Protein Information

Name VWF

Synonyms F8VWF

Function

Important in the maintenance of hemostasis, it promotes adhesion of platelets to the sites of vascular injury by forming a molecular bridge between sub-endothelial collagen matrix and platelet- surface receptor complex GPIb-IX-V. Also acts as a chaperone for coagulation factor VIII, delivering it to the site of injury, stabilizing its heterodimeric structure and protecting it from premature clearance from plasma.

Cellular Location

Secreted. Secreted, extracellular space, extracellular matrix. Note=Localized to storage granules

Tissue Location

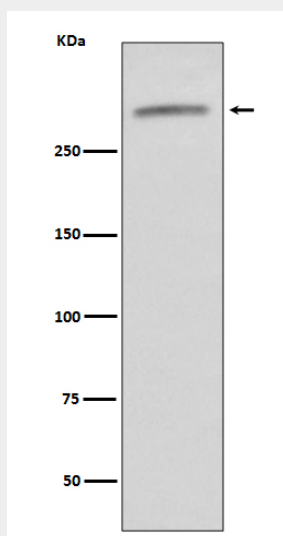
Plasma.

Anti-VWF/Von Willebrand Factor Rabbit Monoclonal Antibody - Protocols

Provided below are standard protocols that you may find useful for product applications.

- [Western Blot](#)
- [Blocking Peptides](#)
- [Dot Blot](#)
- [Immunohistochemistry](#)
- [Immunofluorescence](#)
- [Immunoprecipitation](#)
- [Flow Cytometry](#)
- [Cell Culture](#)

Anti-VWF/Von Willebrand Factor Rabbit Monoclonal Antibody - Images



Western blot analysis of VWF expression in human serum lysate.