

Anti-PDI PDIA2 Rabbit Monoclonal Antibody
Catalog # ABO13273**Specification**

Anti-PDI PDIA2 Rabbit Monoclonal Antibody - Product Information

Application	WB, FC
Primary Accession	Q13087
Host	Rabbit
Isotype	Rabbit IgG
Reactivity	Rat, Human, Mouse
Clonality	Monoclonal
Format	Liquid

Description

Anti-PDI PDIA2 Rabbit Monoclonal Antibody . Tested in WB, Flow Cytometry applications. This antibody reacts with Human, Mouse, Rat.

Anti-PDI PDIA2 Rabbit Monoclonal Antibody - Additional Information

Gene ID 64714

Other Names

Protein disulfide-isomerase A2, 5.3.4.1, Pancreas-specific protein disulfide isomerase, PDIp, PDIA2, PDIP

Calculated MW

58206 MW KDa

Application Details

WB 1:500-1:2000
FC 1:50

Subcellular Localization

Endoplasmic reticulum lumen.

Tissue Specificity

Highly expressed in pancreas (at protein level)..

Contents

Rabbit IgG in phosphate buffered saline, pH 7.4, 150mM NaCl, 0.02% sodium azide and 50% glycerol, 0.4-0.5mg/ml BSA.

Immunogen

A synthesized peptide derived from human PDI

Purification

Affinity-chromatography

Storage

Store at -20°C for one year. For short term storage and frequent use, store at 4°C for up to one month. Avoid repeated

freeze-thaw cycles.

Anti-PDI PDIA2 Rabbit Monoclonal Antibody - Protein Information

Name PDIA2

Synonyms PDIP

Function

Acts as an intracellular estrogen-binding protein. May be involved in modulating cellular levels and biological functions of estrogens in the pancreas. May act as a chaperone that inhibits aggregation of misfolded proteins.

Cellular Location

Endoplasmic reticulum lumen {ECO:0000255|PROSITE- ProRule:PRU10138}

Tissue Location

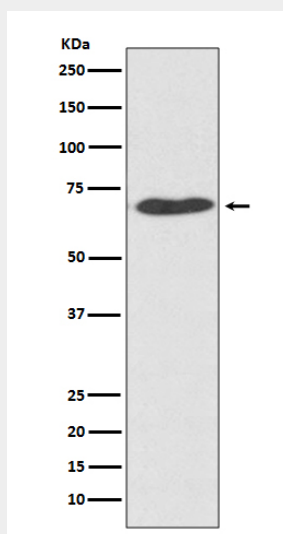
Highly expressed in pancreas (at protein level).

Anti-PDI PDIA2 Rabbit Monoclonal Antibody - Protocols

Provided below are standard protocols that you may find useful for product applications.

- [Western Blot](#)
- [Blocking Peptides](#)
- [Dot Blot](#)
- [Immunohistochemistry](#)
- [Immunofluorescence](#)
- [Immunoprecipitation](#)
- [Flow Cytometry](#)
- [Cell Culture](#)

Anti-PDI PDIA2 Rabbit Monoclonal Antibody - Images



Western blot analysis of PDI expression in HeLa cell lysate.