

**Anti-IL4 Rabbit Monoclonal Antibody**  
**Catalog # ABO13281****Specification**

---

**Anti-IL4 Rabbit Monoclonal Antibody - Product Information**

Application	WB, IF, ICC
Primary Accession	<a href="#">P05112</a>
Host	Rabbit
Isotype	Rabbit IgG
Reactivity	Human
Clonality	Monoclonal
Format	Liquid

**Description**

Anti-IL4 Rabbit Monoclonal Antibody . Tested in WB, ICC/IF applications. This antibody reacts with Human.

**Anti-IL4 Rabbit Monoclonal Antibody - Additional Information**

**Gene ID** 3565

**Other Names**

Interleukin-4, IL-4, B-cell stimulatory factor 1, BSF-1, Binetrakin, Lymphocyte stimulatory factor 1, Pitrakinra, IL4

**Calculated MW**

17492 MW KDa

**Application Details**

WB 1:500-1:2000<br>ICC/IF 1:50-1:200

**Subcellular Localization**

Secreted.

**Contents**

Rabbit IgG in phosphate buffered saline, pH 7.4, 150mM NaCl, 0.02% sodium azide and 50% glycerol, 0.4-0.5mg/ml BSA.

**Immunogen**

A synthesized peptide derived from human IL4

**Purification**

Affinity-chromatography

**Storage**

**Store at -20°C for one year. For short term storage and frequent use, store at 4°C for up to one month. Avoid repeated freeze-thaw cycles.**

**Anti-IL4 Rabbit Monoclonal Antibody - Protein Information**

**Name IL4****Function**

Cytokine secreted primarily by mast cells, T-cells, eosinophils, and basophils that plays a role in regulating antibody production, hematopoiesis and inflammation, and the development of effector T-cell responses (PubMed:<a href="http://www.uniprot.org/citations/1993171" target="\_blank">1993171</a>, PubMed:<a href="http://www.uniprot.org/citations/3016727" target="\_blank">3016727</a>). Induces the expression of class II MHC molecules on resting B-cells. Enhances both secretion and cell surface expression of IgE and IgG1 (PubMed:<a href="http://www.uniprot.org/citations/1993171" target="\_blank">1993171</a>). Also regulates the expression of the low affinity Fc receptor for IgE (CD23) on both lymphocytes and monocytes (PubMed:<a href="http://www.uniprot.org/citations/2521231" target="\_blank">2521231</a>). Positively regulates IL31RA expression in macrophages. Stimulates autophagy in dendritic cells by interfering with mTORC1 signaling and through the induction of RUFY4. In addition, plays a critical role in higher functions of the normal brain, such as memory and learning (By similarity). Upon binding to IL4, IL4R receptor dimerizes either with the common IL2R gamma chain/IL2RG to produce the type 1 signaling complex, located mainly on hematopoietic cells, or with the IL13RA1 to produce the type 2 complex, which is also expressed on nonhematopoietic cells (PubMed:<a href="http://www.uniprot.org/citations/10219247" target="\_blank">10219247</a>, PubMed:<a href="http://www.uniprot.org/citations/11526337" target="\_blank">11526337</a>, PubMed:<a href="http://www.uniprot.org/citations/18243101" target="\_blank">18243101</a>). Engagement of both types of receptors initiates JAK3 and to a lower extend JAK1 phosphorylation leading to activation of the signal transducer and activator of transcription 6/STAT6 (PubMed:<a href="http://www.uniprot.org/citations/7721895" target="\_blank">7721895</a>).

**Cellular Location**

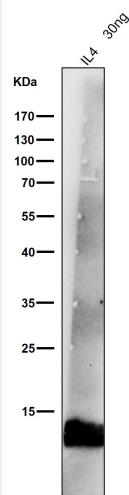
Secreted.

**Anti-IL4 Rabbit Monoclonal Antibody - Protocols**

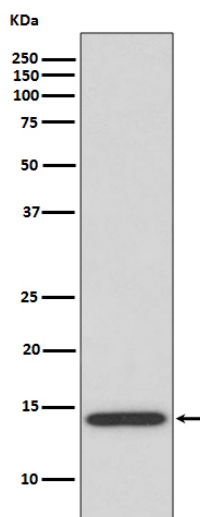
Provided below are standard protocols that you may find useful for product applications.

- [Western Blot](#)
- [Blocking Peptides](#)
- [Dot Blot](#)
- [Immunohistochemistry](#)
- [Immunofluorescence](#)
- [Immunoprecipitation](#)
- [Flow Cytometry](#)
- [Cell Culture](#)

**Anti-IL4 Rabbit Monoclonal Antibody - Images**



All lanes use the Antibody at 1:1W dilution for 1 hour at room temperature.



Western blot analysis of IL4 expression in human tonsil lysate.