

**Anti-A2M/Alpha 2 Macroglobulin Rabbit Monoclonal Antibody**  
**Catalog # ABO13286****Specification**

---

**Anti-A2M/Alpha 2 Macroglobulin Rabbit Monoclonal Antibody - Product Information**

Application	WB, IHC
Primary Accession	<a href="#">P01023</a>
Host	Rabbit
Isotype	Rabbit IgG
Reactivity	Human
Clonality	Monoclonal
Format	Liquid

**Description**

Anti-A2M/Alpha 2 Macroglobulin Rabbit Monoclonal Antibody . Tested in WB, IHC applications. This antibody reacts with Human.

**Anti-A2M/Alpha 2 Macroglobulin Rabbit Monoclonal Antibody - Additional Information****Gene ID 2****Other Names**

Alpha-2-macroglobulin, Alpha-2-M, C3 and PZP-like alpha-2-macroglobulin domain-containing protein 5, A2M, CPAMD5

**Calculated MW**

163291 MW KDa

**Application Details**

WB 1:500-1:2000<br>IHC 1:50-1:200

**Subcellular Localization**

Secreted.

**Tissue Specificity**

Secreted in plasma..

**Contents**

Rabbit IgG in phosphate buffered saline, pH 7.4, 150mM NaCl, 0.02% sodium azide and 50% glycerol, 0.4-0.5mg/ml BSA.

**Immunogen**

A synthesized peptide derived from human A2M

**Purification**

Affinity-chromatography

**Storage**

**Store at -20°C for one year. For short term storage and frequent use, store at 4°C for up to one month. Avoid repeated**

freeze-thaw cycles.

## **Anti-A2M/Alpha 2 Macroglobulin Rabbit Monoclonal Antibody - Protein Information**

**Name** A2M

**Synonyms** CPAMD5

### **Function**

Is able to inhibit all four classes of proteinases by a unique 'trapping' mechanism. This protein has a peptide stretch, called the 'bait region' which contains specific cleavage sites for different proteinases. When a proteinase cleaves the bait region, a conformational change is induced in the protein which traps the proteinase. The entrapped enzyme remains active against low molecular weight substrates (activity against high molecular weight substrates is greatly reduced). Following cleavage in the bait region, a thioester bond is hydrolyzed and mediates the covalent binding of the protein to the proteinase.

### **Cellular Location**

Secreted.

### **Tissue Location**

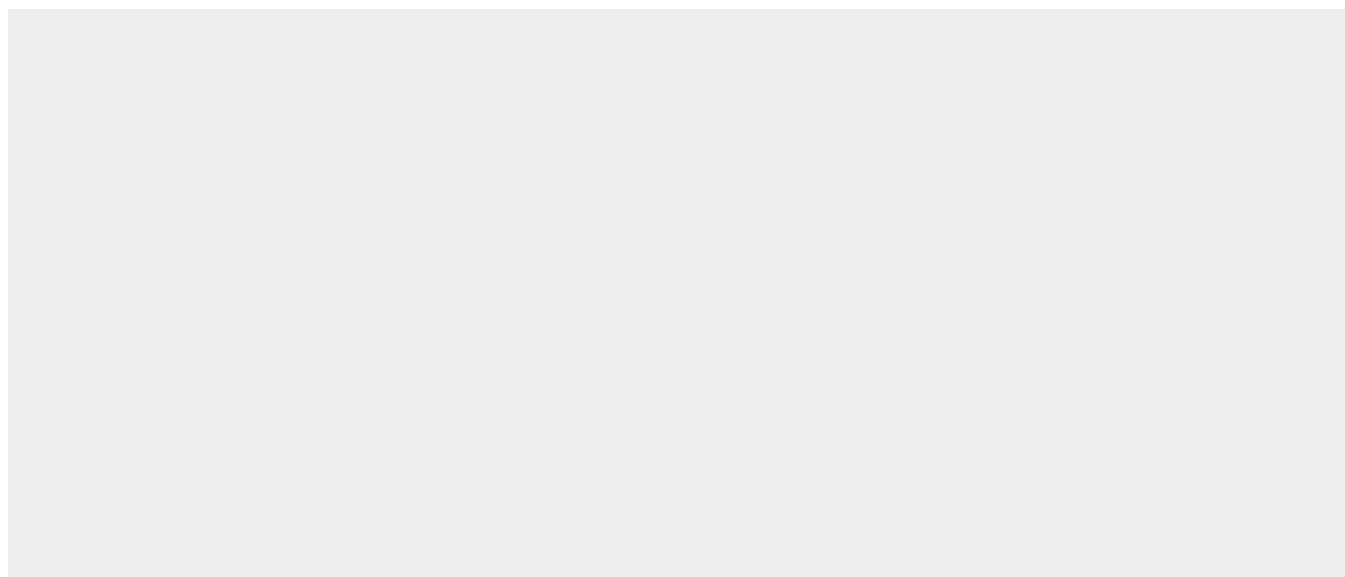
Secreted in plasma..

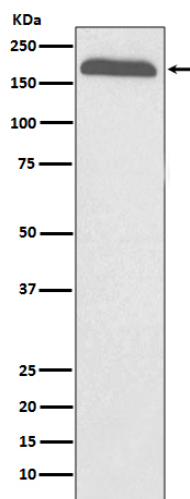
## **Anti-A2M/Alpha 2 Macroglobulin Rabbit Monoclonal Antibody - Protocols**

Provided below are standard protocols that you may find useful for product applications.

- [Western Blot](#)
- [Blocking Peptides](#)
- [Dot Blot](#)
- [Immunohistochemistry](#)
- [Immunofluorescence](#)
- [Immunoprecipitation](#)
- [Flow Cytometry](#)
- [Cell Culture](#)

## **Anti-A2M/Alpha 2 Macroglobulin Rabbit Monoclonal Antibody - Images**





Western blot analysis of A2M expression in human plasma lysate.