

**Anti-ENO1/Alpha Enolase Rabbit Monoclonal Antibody**  
**Catalog # ABO13306****Specification**

---

**Anti-ENO1/Alpha Enolase Rabbit Monoclonal Antibody - Product Information**

Application	WB, IF, ICC, IP
Primary Accession	<a href="#">P06733</a>
Host	Rabbit
Isotype	Rabbit IgG
Reactivity	Rat, Human, Mouse
Clonality	Monoclonal
Format	Liquid

**Description**

Anti-ENO1/Alpha Enolase Rabbit Monoclonal Antibody . Tested in WB, ICC/IF, IP applications. This antibody reacts with Human, Mouse, Rat.

**Anti-ENO1/Alpha Enolase Rabbit Monoclonal Antibody - Additional Information**

**Gene ID** 2023

**Other Names**

Alpha-enolase, 4.2.1.11, 2-phospho-D-glycerate hydro-lyase, C-myc promoter-binding protein, Enolase 1, MBP-1, MPB-1, Non-neural enolase, NNE, Phosphopyruvate hydratase, Plasminogen-binding protein, ENO1, ENO1L1, MBPB1, MPB1

**Calculated MW**

47169 MW KDa

**Application Details**

WB 1:500-1:2000<br>ICC/IF 1:50-1:200<br>IP 1:50

**Subcellular Localization**

Cytoplasm. Cell membrane. Cytoplasm, myofibril, sarcomere, M line. Can translocate to the plasma membrane in either the homodimeric (alpha/alpha) or heterodimeric (alpha/gamma) form. ENO1 is localized to the M line.

**Tissue Specificity**

The alpha/alpha homodimer is expressed in embryo and in most adult tissues. The alpha/beta heterodimer and the beta/beta homodimer are found in striated muscle, and the alpha/gamma heterodimer and the gamma/gamma homodimer in neurons.

**Contents**

Rabbit IgG in phosphate buffered saline, pH 7.4, 150mM NaCl, 0.02% sodium azide and 50% glycerol, 0.4-0.5mg/ml BSA.

**Immunogen**

A synthesized peptide derived from human ENO1

**Purification**

Affinity-chromatography

Storage

**Store at -20°C for one year. For short term storage and frequent use, store at 4°C for up to one month. Avoid repeated freeze-thaw cycles.**

## **Anti-ENO1/Alpha Enolase Rabbit Monoclonal Antibody - Protein Information**

**Name** ENO1 ([HGNC:3350](#))

**Synonyms** ENO1L1, MBPB1, MPB1

### **Function**

Enolase that catalyzes the conversion of 2-phosphoglycerate to phosphoenolpyruvate in glycolysis and the reverse reaction in gluconeogenesis (PubMed:<a href="http://www.uniprot.org/citations/1369209" target="\_blank">1369209</a>, PubMed:<a href="http://www.uniprot.org/citations/29775581" target="\_blank">29775581</a>). Also involved in various processes such as growth control, hypoxia tolerance and allergic responses (PubMed:<a href="http://www.uniprot.org/citations/10802057" target="\_blank">10802057</a>, PubMed:<a href="http://www.uniprot.org/citations/12666133" target="\_blank">12666133</a>, PubMed:<a href="http://www.uniprot.org/citations/2005901" target="\_blank">2005901</a>, PubMed:<a href="http://www.uniprot.org/citations/29775581" target="\_blank">29775581</a>). May also function in the intravascular and pericellular fibrinolytic system due to its ability to serve as a receptor and activator of plasminogen on the cell surface of several cell-types such as leukocytes and neurons (PubMed:<a href="http://www.uniprot.org/citations/12666133" target="\_blank">12666133</a>). Stimulates immunoglobulin production (PubMed:<a href="http://www.uniprot.org/citations/1369209" target="\_blank">1369209</a>).

### **Cellular Location**

Cytoplasm. Cell membrane. Cytoplasm, myofibril, sarcomere, M line. Note=Can translocate to the plasma membrane in either the homodimeric (alpha/alpha) or heterodimeric (alpha/gamma) form. ENO1 is localized to the M line

### **Tissue Location**

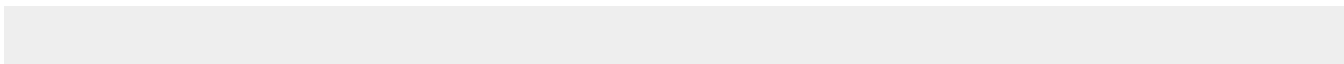
The alpha/alpha homodimer is expressed in embryo and in most adult tissues. The alpha/beta heterodimer and the beta/beta homodimer are found in striated muscle, and the alpha/gamma heterodimer and the gamma/gamma homodimer in neurons

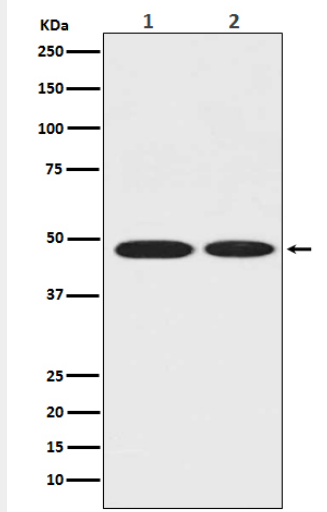
## **Anti-ENO1/Alpha Enolase Rabbit Monoclonal Antibody - Protocols**

Provided below are standard protocols that you may find useful for product applications.

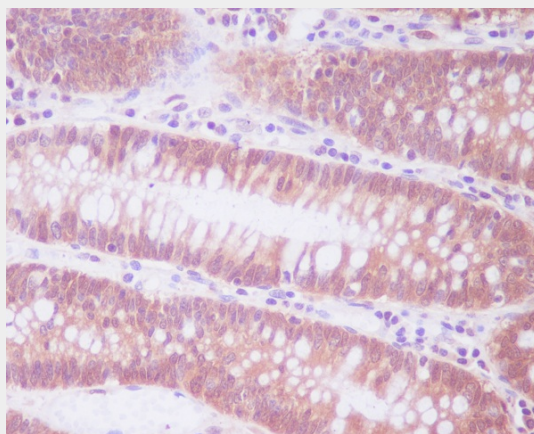
- [Western Blot](#)
- [Blocking Peptides](#)
- [Dot Blot](#)
- [Immunohistochemistry](#)
- [Immunofluorescence](#)
- [Immunoprecipitation](#)
- [Flow Cytometry](#)
- [Cell Culture](#)

## **Anti-ENO1/Alpha Enolase Rabbit Monoclonal Antibody - Images**





Western blot analysis of ENO1 in (1)MCF-7 whole cell lysate; (2)Rat brain tissue lysate.



Immunohistochemical analysis of paraffin-embedded human colon, using ENO1 Antibody.