

Anti-PDX1/Ipf1 Rabbit Monoclonal Antibody
Catalog # ABO13308**Specification**

Anti-PDX1/Ipf1 Rabbit Monoclonal Antibody - Product Information

Application	WB, IHC, IF, ICC
Primary Accession	P52945
Host	Rabbit
Isotype	Rabbit IgG
Reactivity	Human
Clonality	Monoclonal
Format	Liquid

Description

Anti-PDX1/Ipf1 Rabbit Monoclonal Antibody . Tested in WB, IHC, ICC/IF applications. This antibody reacts with Human.

Anti-PDX1/Ipf1 Rabbit Monoclonal Antibody - Additional Information

Gene ID 3651

Other Names

Pancreas/duodenum homeobox protein 1, PDX-1, Glucose-sensitive factor, GSF, Insulin promoter factor 1, IPF-1, Insulin upstream factor 1, IUF-1, Islet/duodenum homeobox-1, IDX-1, Somatostatin-transactivating factor 1, STF-1, PDX1, IPF1, STF1

Calculated MW

30771 MW KDa

Application Details

WB 1:500-1:2000
IHC 1:50-1:200
ICC/IF 1:50-1:200

Subcellular Localization

Nucleus. Cytoplasm, cytosol.

Tissue Specificity

Duodenum and pancreas (Langerhans islet beta cells and small subsets of endocrine non-beta-cells, at low levels in acinar cells).

Contents

Rabbit IgG in phosphate buffered saline, pH 7.4, 150mM NaCl, 0.02% sodium azide and 50% glycerol, 0.4-0.5mg/ml BSA.

Immunogen

A synthesized peptide derived from human PDX1

Purification

Affinity-chromatography

Storage

Store at -20°C for one year. For short term

storage and frequent use, store at 4°C for up to one month. Avoid repeated freeze-thaw cycles.

Anti-PDX1/Ip1f1 Rabbit Monoclonal Antibody - Protein Information

Name PDX1

Synonyms IPF1, STF1

Function

Activates insulin, somatostatin, glucokinase, islet amyloid polypeptide and glucose transporter type 2 gene transcription. Particularly involved in glucose-dependent regulation of insulin gene transcription. As part of a PDX1:PBX1b:MEIS2b complex in pancreatic acinar cells is involved in the transcriptional activation of the ELA1 enhancer; the complex binds to the enhancer B element and cooperates with the transcription factor 1 complex (PTF1) bound to the enhancer A element. Binds preferentially the DNA motif 5'-[CT]TAAT[TG]-3'. During development, specifies the early pancreatic epithelium, permitting its proliferation, branching and subsequent differentiation. At adult stage, required for maintaining the hormone-producing phenotype of the beta-cell.

Cellular Location

Nucleus. Cytoplasm, cytosol.

Tissue Location

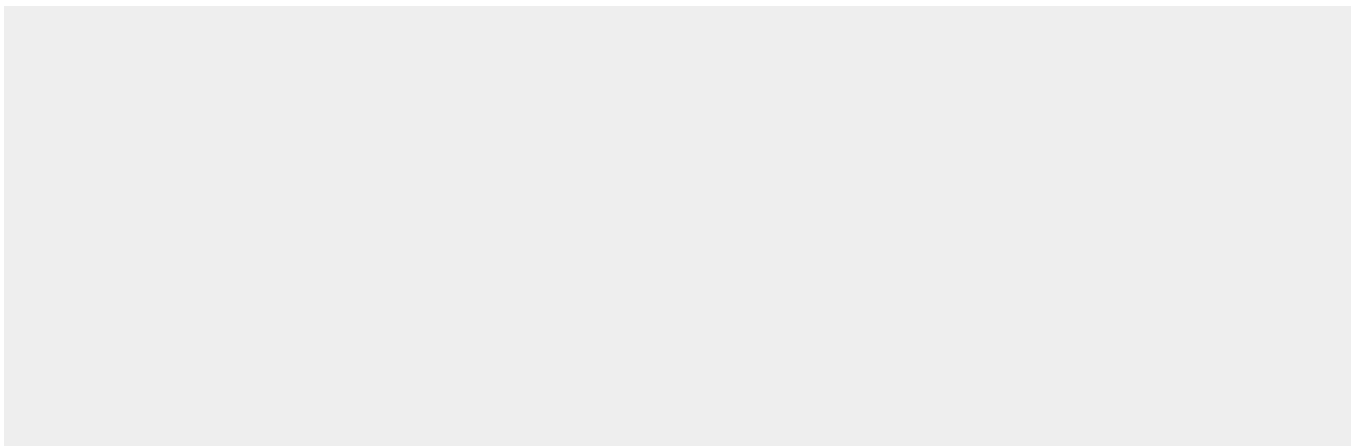
Duodenum and pancreas (Langerhans islet beta cells and small subsets of endocrine non-beta-cells, at low levels in acinar cells)

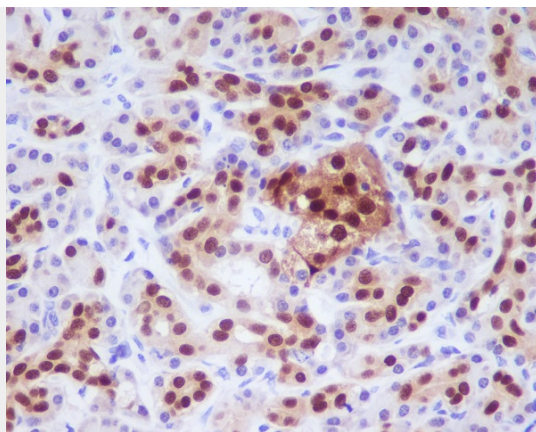
Anti-PDX1/Ip1f1 Rabbit Monoclonal Antibody - Protocols

Provided below are standard protocols that you may find useful for product applications.

- [Western Blot](#)
- [Blocking Peptides](#)
- [Dot Blot](#)
- [Immunohistochemistry](#)
- [Immunofluorescence](#)
- [Immunoprecipitation](#)
- [Flow Cytometry](#)
- [Cell Culture](#)

Anti-PDX1/Ip1f1 Rabbit Monoclonal Antibody - Images





Immunohistochemical analysis of paraffin-embedded human pancreas, using PDX1 Antibody.

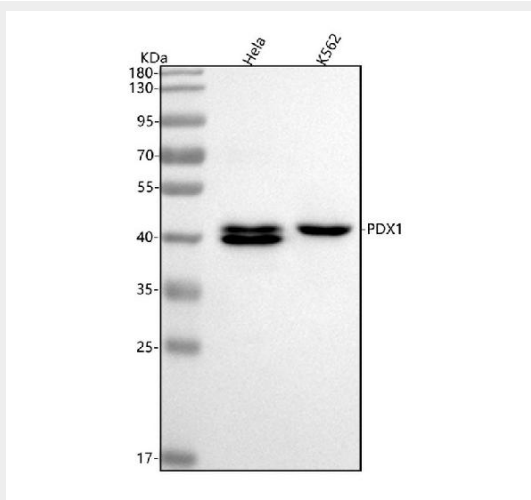


Figure 1. Western blot analysis of PDX1/lpf1 using anti-PDX1/lpf1 antibody (M00491). Electrophoresis was performed on a 5-20% SDS-PAGE gel at 70V (Stacking gel) / 90V (Resolving gel) for 2-3 hours. The sample well of each lane was loaded with 30 ug of sample under reducing conditions.

Lane 1: human HeLa whole cell lysates,

Lane 2: human K562 whole cell lysates.

After electrophoresis, proteins were transferred to a nitrocellulose membrane at 150 mA for 50-90 minutes. Blocked the membrane with 5% non-fat milk/TBS for 1.5 hour at RT. The membrane was incubated with rabbit anti-PDX1/lpf1 antigen affinity purified monoclonal antibody (Catalog # M00491) at 1:500 overnight at 4°C, then washed with TBS-0.1%Tween 3 times with 5 minutes each and probed with a goat anti-rabbit IgG-HRP secondary antibody at a dilution of 1:5000 for 1.5 hour at RT. The signal is developed using an Enhanced Chemiluminescent detection (ECL) kit (Catalog # EK1002) with Tanon 5200 system. A specific band was detected for PDX1/lpf1 at approximately 42 kDa. The expected band size for PDX1/lpf1 is at 31 kDa.