

**Anti-Pax2 Rabbit Monoclonal Antibody**  
**Catalog # ABO13331****Specification**

---

**Anti-Pax2 Rabbit Monoclonal Antibody - Product Information**

Application	WB, IHC, FC
Primary Accession	<a href="#">Q02962</a>
Host	Rabbit
Isotype	Rabbit IgG
Reactivity	Human, Mouse
Clonality	Monoclonal
Format	Liquid

**Description**

Anti-Pax2 Rabbit Monoclonal Antibody . Tested in WB, IHC, Flow Cytometry applications. This antibody reacts with Human, Mouse.

**Anti-Pax2 Rabbit Monoclonal Antibody - Additional Information**

**Gene ID** 5076

**Other Names**

Paired box protein Pax-2, PAX2

**Calculated MW**

44706 MW KDa

**Application Details**

WB 1:500-1:2000<br>IHC 1:50-1:200<br>FC 1:50

**Subcellular Localization**

Nucleus.

**Tissue Specificity**

Expressed in primitive cells of the kidney, ureter, eye, ear and central nervous system.

**Contents**

Rabbit IgG in phosphate buffered saline, pH 7.4, 150mM NaCl, 0.02% sodium azide and 50% glycerol, 0.4-0.5mg/ml BSA.

**Immunogen**

A synthesized peptide derived from human Pax2

**Purification**

Affinity-chromatography

**Storage**

**Store at -20°C for one year. For short term storage and frequent use, store at 4°C for up to one month. Avoid repeated freeze-thaw cycles.**

## Anti-Pax2 Rabbit Monoclonal Antibody - Protein Information

**Name** PAX2

### Function

Transcription factor that may have a role in kidney cell differentiation (PubMed:<a href="http://www.uniprot.org/citations/24676634" target="\_blank">24676634</a>). Has a critical role in the development of the urogenital tract, the eyes, and the CNS.

### Cellular Location

Nucleus.

### Tissue Location

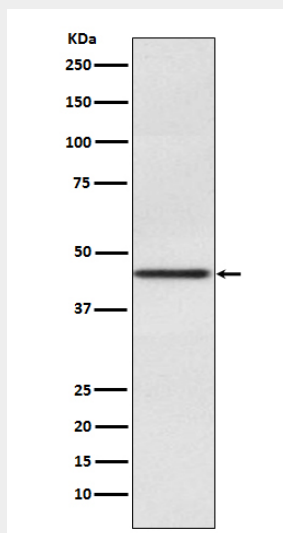
Expressed in primitive cells of the kidney, ureter, eye, ear and central nervous system

## Anti-Pax2 Rabbit Monoclonal Antibody - Protocols

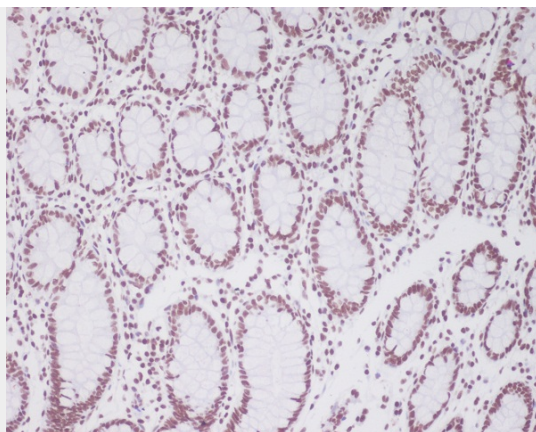
Provided below are standard protocols that you may find useful for product applications.

- [Western Blot](#)
- [Blocking Peptides](#)
- [Dot Blot](#)
- [Immunohistochemistry](#)
- [Immunofluorescence](#)
- [Immunoprecipitation](#)
- [Flow Cytometry](#)
- [Cell Culture](#)

## Anti-Pax2 Rabbit Monoclonal Antibody - Images



Western blot analysis of Pax2 expression in Human fetal kidney lysate.



Immunohistochemical analysis of paraffin-embedded human colon using Pax2 Antibody.