

**Anti-VASP Rabbit Monoclonal Antibody**  
**Catalog # ABO13342****Specification**

---

**Anti-VASP Rabbit Monoclonal Antibody - Product Information**

Application	WB, IP
Primary Accession	<a href="#">P50552</a>
Host	Rabbit
Isotype	Rabbit IgG
Reactivity	Human
Clonality	Monoclonal
Format	Liquid

**Description**

Anti-VASP Rabbit Monoclonal Antibody . Tested in WB, IP applications. This antibody reacts with Human.

**Anti-VASP Rabbit Monoclonal Antibody - Additional Information**

**Gene ID** 7408

**Other Names**

Vasodilator-stimulated phosphoprotein, VASP, VASP

**Calculated MW**

39830 MW KDa

**Application Details**

WB 1:500-1:2000<br>IP 1:50

**Subcellular Localization**

Cytoplasm. Cytoplasm, cytoskeleton. Cell junction, focal adhesion. Cell junction, tight junction. Cell projection, lamellipodium membrane. Cell projection, filopodium membrane. Targeted to stress fibers and focal adhesions through interaction with a number of proteins including MRL family members. Localizes to the plasma membrane in protruding lamellipodia and filopodial tips. Stimulation by thrombin or PMA, also translocates VASP to focal adhesions. Localized along the sides of actin filaments throughout the peripheral cytoplasm under basal conditions. In pre-apoptotic cells, colocalizes with MEFV in large specks (pyroptosomes).

**Tissue Specificity**

Highly expressed in platelets..

**Contents**

Rabbit IgG in phosphate buffered saline, pH 7.4, 150mM NaCl, 0.02% sodium azide and 50% glycerol, 0.4-0.5mg/ml BSA.

**Immunogen**

A synthesized peptide derived from human VASP

**Purification**

Affinity-chromatography

Storage

**Store at -20°C for one year. For short term storage and frequent use, store at 4°C for up to one month. Avoid repeated freeze-thaw cycles.**

## **Anti-VASP Rabbit Monoclonal Antibody - Protein Information**

**Name** VASP

### **Function**

Ena/VASP proteins are actin-associated proteins involved in a range of processes dependent on cytoskeleton remodeling and cell polarity such as axon guidance, lamellipodial and filopodial dynamics, platelet activation and cell migration. VASP promotes actin filament elongation. It protects the barbed end of growing actin filaments against capping and increases the rate of actin polymerization in the presence of capping protein. VASP stimulates actin filament elongation by promoting the transfer of profilin-bound actin monomers onto the barbed end of growing actin filaments. Plays a role in actin-based mobility of *Listeria monocytogenes* in host cells. Regulates actin dynamics in platelets and plays an important role in regulating platelet aggregation.

### **Cellular Location**

Cytoplasm. Cytoplasm, cytoskeleton. Cell junction, focal adhesion. Cell junction, tight junction Cell projection, lamellipodium membrane. Cell projection, filopodium membrane. Note=Targeted to stress fibers and focal adhesions through interaction with a number of proteins including MRL family members Localizes to the plasma membrane in protruding lamellipodia and filopodial tips. Stimulation by thrombin or PMA, also translocates VASP to focal adhesions. Localized along the sides of actin filaments throughout the peripheral cytoplasm under basal conditions. In pre-apoptotic cells, colocalizes with MEFV in large specks (pyroptosomes)

### **Tissue Location**

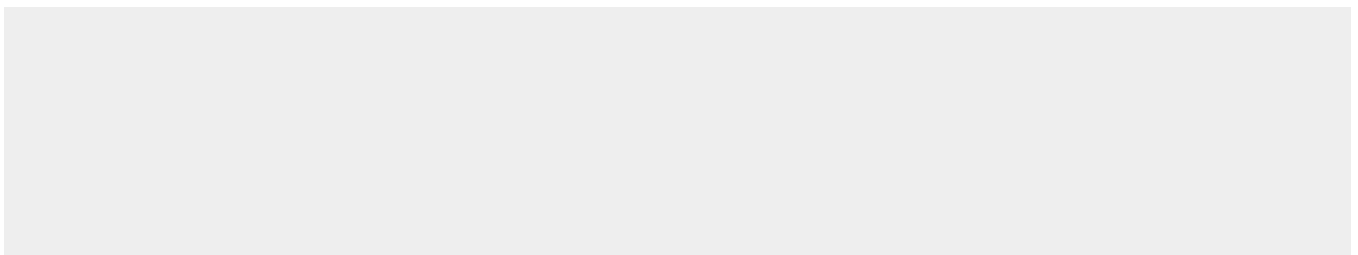
Highly expressed in platelets.

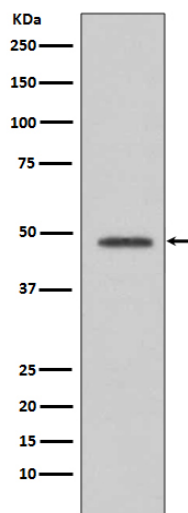
## **Anti-VASP Rabbit Monoclonal Antibody - Protocols**

Provided below are standard protocols that you may find useful for product applications.

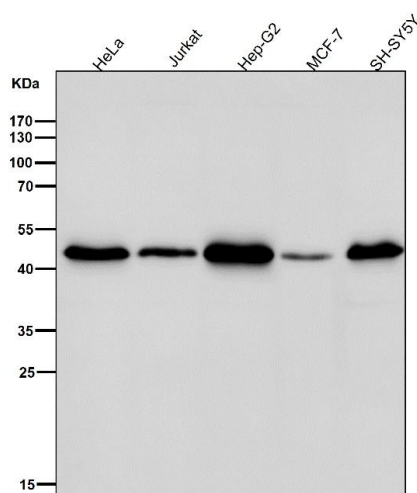
- [Western Blot](#)
- [Blocking Peptides](#)
- [Dot Blot](#)
- [Immunohistochemistry](#)
- [Immunofluorescence](#)
- [Immunoprecipitation](#)
- [Flow Cytometry](#)
- [Cell Culture](#)

## **Anti-VASP Rabbit Monoclonal Antibody - Images**





Western blot analysis of VASP expression in HepG2 cell lysate.



All lanes use the Antibody at 1:5K dilution for 1 hour at room temperature.