

**Anti-WNT2 Rabbit Monoclonal Antibody**  
**Catalog # ABO13345****Specification**

---

**Anti-WNT2 Rabbit Monoclonal Antibody - Product Information**

Application	WB
Primary Accession	<a href="#">P09544</a>
Host	Rabbit
Isotype	Rabbit IgG
Reactivity	Rat, Human, Mouse
Clonality	Monoclonal
Format	Liquid

**Description**

Anti-WNT2 Rabbit Monoclonal Antibody . Tested in WB application. This antibody reacts with Human, Mouse, Rat.

**Anti-WNT2 Rabbit Monoclonal Antibody - Additional Information**

**Gene ID** 7472

**Other Names**

Protein Wnt-2, Int-1-like protein 1, Int-1-related protein, IRP, WNT2, INT1L1, IRP

**Calculated MW**

40418 MW KDa

**Application Details**

WB 1:500-1:2000

**Subcellular Localization**

Secreted, extracellular space, extracellular matrix.

**Tissue Specificity**

Expressed in brain in the thalamus, in fetal and adult lung and in placenta..

**Contents**

Rabbit IgG in phosphate buffered saline, pH 7.4, 150mM NaCl, 0.02% sodium azide and 50% glycerol, 0.4-0.5mg/ml BSA.

**Immunogen**

A synthesized peptide derived from human WNT2

**Purification**

Affinity-chromatography

**Storage**

**Store at -20°C for one year. For short term storage and frequent use, store at 4°C for up to one month. Avoid repeated freeze-thaw cycles.**

## Anti-WNT2 Rabbit Monoclonal Antibody - Protein Information

**Name** WNT2

**Synonyms** INT1L1, IRP

### Function

Ligand for members of the frizzled family of seven transmembrane receptors. Functions in the canonical Wnt signaling pathway that results in activation of transcription factors of the TCF/LEF family (PubMed:<a href="http://www.uniprot.org/citations/20018874" target="\_blank">20018874</a>). Functions as an upstream regulator of FGF10 expression. Plays an important role in embryonic lung development. May contribute to embryonic brain development by regulating the proliferation of dopaminergic precursors and neurons (By similarity).

### Cellular Location

Secreted, extracellular space, extracellular matrix. Secreted

### Tissue Location

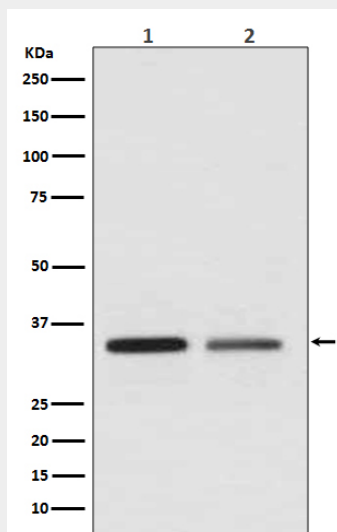
Expressed in brain in the thalamus, in fetal and adult lung and in placenta.

## Anti-WNT2 Rabbit Monoclonal Antibody - Protocols

Provided below are standard protocols that you may find useful for product applications.

- [Western Blot](#)
- [Blocking Peptides](#)
- [Dot Blot](#)
- [Immunohistochemistry](#)
- [Immunofluorescence](#)
- [Immunoprecipitation](#)
- [Flow Cytometry](#)
- [Cell Culture](#)

## Anti-WNT2 Rabbit Monoclonal Antibody - Images



Western blot analysis of WNT2 expression in (1) Jurkat cell lysate; (2) SKBR-3 cell lysate.