

**Anti-TCF3 TCF7L1 Rabbit Monoclonal Antibody**  
**Catalog # ABO13346****Specification**

---

**Anti-TCF3 TCF7L1 Rabbit Monoclonal Antibody - Product Information**

Application	WB, FC
Primary Accession	<a href="#">Q9HCS4</a>
Host	Rabbit
Isotype	Rabbit IgG
Reactivity	Human
Clonality	Monoclonal
Format	Liquid

**Description**

Anti-TCF3 TCF7L1 Rabbit Monoclonal Antibody . Tested in WB, Flow Cytometry applications. This antibody reacts with Human.

**Anti-TCF3 TCF7L1 Rabbit Monoclonal Antibody - Additional Information**

**Gene ID** 83439

**Other Names**

Transcription factor 7-like 1, HMG box transcription factor 3, TCF-3, TCF7L1, TCF3

**Calculated MW**

62631 MW KDa

**Application Details**

WB 1:500-1:2000<br>FC 1:50

**Subcellular Localization**

Nucleus.

**Tissue Specificity**

Detected in hair follicles and skin keratinocytes, and at lower levels in stomach epithelium..

**Contents**

Rabbit IgG in phosphate buffered saline, pH 7.4, 150mM NaCl, 0.02% sodium azide and 50% glycerol, 0.4-0.5mg/ml BSA.

**Immunogen**

A synthesized peptide derived from human TCF3

**Purification**

Affinity-chromatography

Storage

**Store at -20°C for one year. For short term storage and frequent use, store at 4°C for up to one month. Avoid repeated freeze-thaw cycles.**

## Anti-TCF3 TCF7L1 Rabbit Monoclonal Antibody - Protein Information

**Name** TCF7L1

**Synonyms** TCF3

### Function

Participates in the Wnt signaling pathway. Binds to DNA and acts as a repressor in the absence of CTNNB1, and as an activator in its presence. Necessary for the terminal differentiation of epidermal cells, the formation of keratohyalin granules and the development of the barrier function of the epidermis (By similarity). Down-regulates NQO1, leading to increased mitomycin c resistance.

### Cellular Location

Nucleus.

### Tissue Location

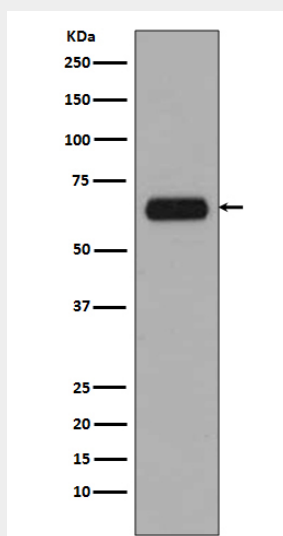
Detected in hair follicles and skin keratinocytes, and at lower levels in stomach epithelium

## Anti-TCF3 TCF7L1 Rabbit Monoclonal Antibody - Protocols

Provided below are standard protocols that you may find useful for product applications.

- [Western Blot](#)
- [Blocking Peptides](#)
- [Dot Blot](#)
- [Immunohistochemistry](#)
- [Immunofluorescence](#)
- [Immunoprecipitation](#)
- [Flow Cytometry](#)
- [Cell Culture](#)

## Anti-TCF3 TCF7L1 Rabbit Monoclonal Antibody - Images



Western blot analysis of TCF3 expression in A431 cell lysate.