

**Anti-GFAP Rabbit Monoclonal Antibody**  
**Catalog # ABO13387****Specification**

---

**Anti-GFAP Rabbit Monoclonal Antibody - Product Information**

Application	WB, IHC, IF, ICC
Primary Accession	<a href="#">P14136</a>
Host	Rabbit
Isotype	Rabbit IgG
Reactivity	Rat, Human
Clonality	Monoclonal
Format	Liquid

**Description**

Anti-GFAP Rabbit Monoclonal Antibody . Tested in WB, IHC, ICC/IF applications. This antibody reacts with Human, Rat.

**Anti-GFAP Rabbit Monoclonal Antibody - Additional Information**

**Gene ID** 2670

**Other Names**

Glial fibrillary acidic protein, GFAP, GFAP

**Calculated MW**

49880 MW KDa

**Application Details**

WB 1:500-1:2000<br>IHC 1:50-1:200<br>ICC/IF 1:50-1:200

**Subcellular Localization**

Cytoplasm. Associated with intermediate filaments.

**Tissue Specificity**

Expressed in cells lacking fibronectin..

**Contents**

Rabbit IgG in phosphate buffered saline, pH 7.4, 150mM NaCl, 0.02% sodium azide and 50% glycerol, 0.4-0.5mg/ml BSA.

**Immunogen**

A synthesized peptide derived from human GFAP

**Purification**

Affinity-chromatography

**Storage**

**Store at -20°C for one year. For short term storage and frequent use, store at 4°C for up to one month. Avoid repeated freeze-thaw cycles.**

## Anti-GFAP Rabbit Monoclonal Antibody - Protein Information

**Name** GFAP

### Function

GFAP, a class-III intermediate filament, is a cell-specific marker that, during the development of the central nervous system, distinguishes astrocytes from other glial cells.

### Cellular Location

Cytoplasm. Note=Associated with intermediate filaments

### Tissue Location

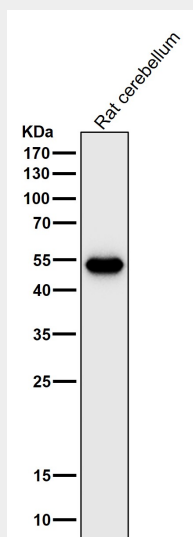
Expressed in cells lacking fibronectin.

## Anti-GFAP Rabbit Monoclonal Antibody - Protocols

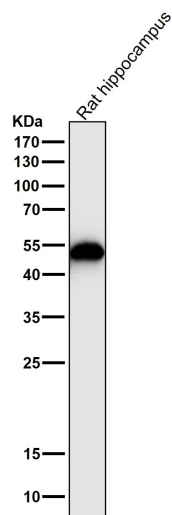
Provided below are standard protocols that you may find useful for product applications.

- [Western Blot](#)
- [Blocking Peptides](#)
- [Dot Blot](#)
- [Immunohistochemistry](#)
- [Immunofluorescence](#)
- [Immunoprecipitation](#)
- [Flow Cytometry](#)
- [Cell Culture](#)

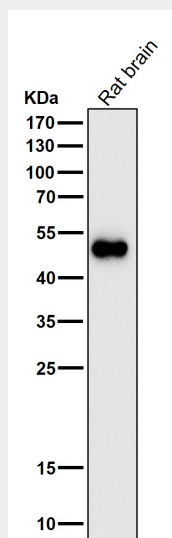
## Anti-GFAP Rabbit Monoclonal Antibody - Images



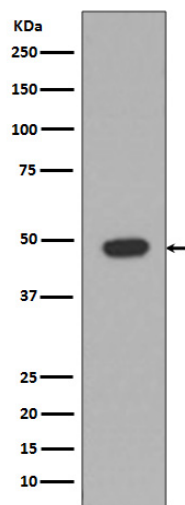
All lanes use the Antibody at 1:2K dilution for 1 hour at room temperature.



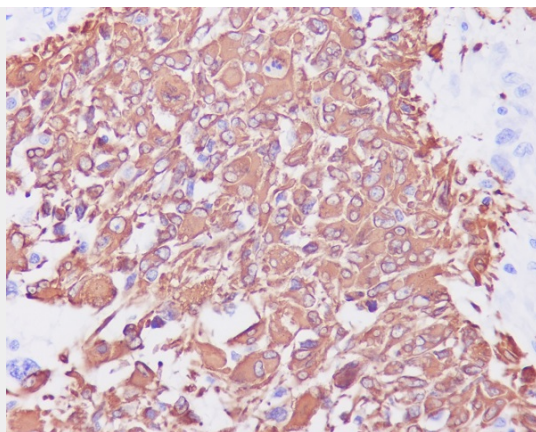
All lanes use the Antibody at 1:2K dilution for 1 hour at room temperature.



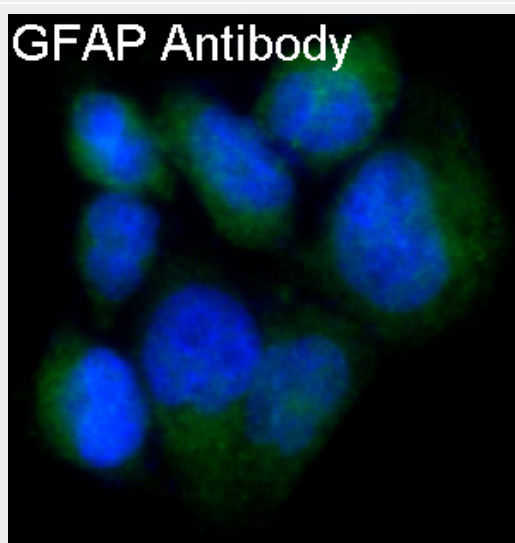
All lanes use the Antibody at 1:2K dilution for 1 hour at room temperature.



Western blot analysis of GFAP expression in Rat brain lysate.



Immunohistochemical analysis of paraffin-embedded human glioma, using GFAP Antibody.



Immunofluorescent analysis of SNB19 cells, using GFAP Antibody.