

Anti-FLI1 Rabbit Monoclonal Antibody
Catalog # ABO13389

Specification

Anti-FLI1 Rabbit Monoclonal Antibody - Product Information

Application	WB, IHC
Primary Accession	Q01543
Host	Rabbit
Isotype	Rabbit IgG
Reactivity	Human, Mouse
Clonality	Monoclonal
Format	Liquid

Description

Anti-FLI1 Rabbit Monoclonal Antibody . Tested in WB, IHC applications. This antibody reacts with Human, Mouse.

Anti-FLI1 Rabbit Monoclonal Antibody - Additional Information

Gene ID 2313

Other Names

Friend leukemia integration 1 transcription factor, Proto-oncogene Fli-1, Transcription factor ERGB, FLI1

Calculated MW

50982 MW KDa

Application Details

WB 1:500-1:2000
IHC 1:100-1:500

Subcellular Localization

Nucleus.

Contents

Rabbit IgG in phosphate buffered saline, pH 7.4, 150mM NaCl, 0.02% sodium azide and 50% glycerol, 0.4-0.5mg/ml BSA.

Immunogen

A synthesized peptide derived from human FLI1

Purification

Affinity-chromatography

Storage

Store at -20°C for one year. For short term storage and frequent use, store at 4°C for up to one month. Avoid repeated freeze-thaw cycles.

Anti-FLI1 Rabbit Monoclonal Antibody - Protein Information

Name FLI1

Function

Sequence-specific transcriptional activator (PubMed:24100448, PubMed:26316623, PubMed:28255014). Recognizes the DNA sequence 5'- C[CA]GGAAGT-3'.

Cellular Location

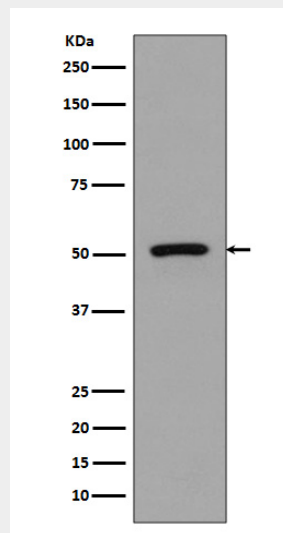
Nucleus.

Anti-FLI1 Rabbit Monoclonal Antibody - Protocols

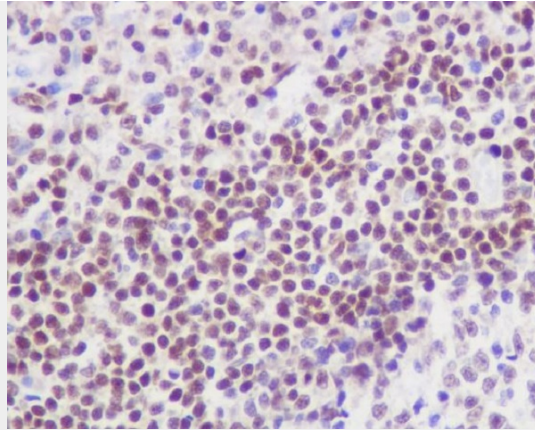
Provided below are standard protocols that you may find useful for product applications.

- [Western Blot](#)
- [Blocking Peptides](#)
- [Dot Blot](#)
- [Immunohistochemistry](#)
- [Immunofluorescence](#)
- [Immunoprecipitation](#)
- [Flow Cytometry](#)
- [Cell Culture](#)

Anti-FLI1 Rabbit Monoclonal Antibody - Images



Western blot analysis of FLI1 expression in Jurkat cell lysate.



Immunohistochemical analysis of paraffin-embedded human tonsil, using FLI1 Antibody.