

Anti-AQP5 Rabbit Monoclonal Antibody
Catalog # ABO13396**Specification**

Anti-AQP5 Rabbit Monoclonal Antibody - Product Information

Application	WB, IHC, IF, ICC
Primary Accession	P55064
Host	Rabbit
Isotype	Rabbit IgG
Reactivity	Human
Clonality	Monoclonal
Format	Liquid

Description

Anti-AQP5 Rabbit Monoclonal Antibody . Tested in WB, IHC, ICC/IF applications. This antibody reacts with Human.

Anti-AQP5 Rabbit Monoclonal Antibody - Additional Information

Gene ID 362

Other Names

Aquaporin-5, AQP-5, AQP5

Calculated MW

28292 MW KDa

Application Details

WB 1:1000-1:2000
IHC 1:50-1:200
ICC/IF 1:50-1:200

Subcellular Localization

Membrane; Multi-pass membrane protein.

Contents

Rabbit IgG in phosphate buffered saline, pH 7.4, 150mM NaCl, 0.02% sodium azide and 50% glycerol, 0.4-0.5mg/ml BSA.

Immunogen

A synthesized peptide derived from human AQP5

Purification

Affinity-chromatography

Storage

Store at -20°C for one year. For short term storage and frequent use, store at 4°C for up to one month. Avoid repeated freeze-thaw cycles.

Anti-AQP5 Rabbit Monoclonal Antibody - Protein Information

Name AQP5 ([HGNC:638](#))

Function

Aquaporins form homotetrameric transmembrane channels, with each monomer independently mediating water transport across the plasma membrane along its osmotic gradient (PubMed:18768791, PubMed:8621489). Plays an important role in fluid secretion in salivary glands (By similarity). Required for TRPV4 activation by hypotonicity. Together with TRPV4, controls regulatory volume decrease in salivary epithelial cells (PubMed:16571723). Seems to play a redundant role in water transport in the eye, lung and in sweat glands (By similarity).

Cellular Location

Apical cell membrane; Multi-pass membrane protein. Cell membrane; Multi-pass membrane protein. Cytoplasmic vesicle membrane; Multi-pass membrane protein Note=Hypotonicity increases location at the cell membrane Phosphorylation decreases location at the cell membrane

Tissue Location

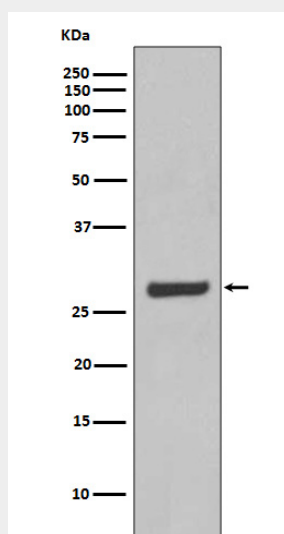
Detected in skin eccrine sweat glands, at the apical cell membrane and at intercellular canaliculi (at protein level).

Anti-AQP5 Rabbit Monoclonal Antibody - Protocols

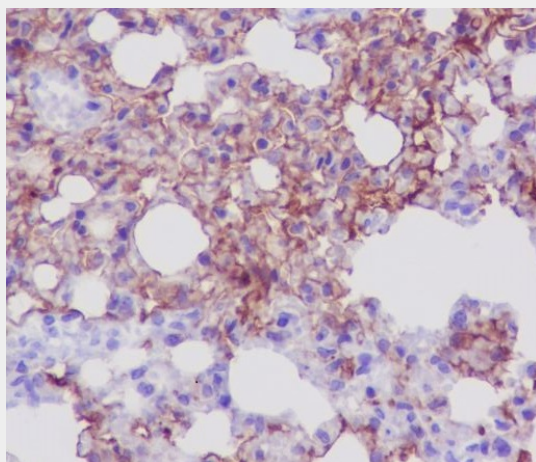
Provided below are standard protocols that you may find useful for product applications.

- [Western Blot](#)
- [Blocking Peptides](#)
- [Dot Blot](#)
- [Immunohistochemistry](#)
- [Immunofluorescence](#)
- [Immunoprecipitation](#)
- [Flow Cytometry](#)
- [Cell Culture](#)

Anti-AQP5 Rabbit Monoclonal Antibody - Images



Western blot analysis of AQP5 expression in SW480 cell lysate.



Immunohistochemical analysis of paraffin-embedded mouse lung, using AQP5 Antibody.