

Anti-NSD3/WHSC1L1 Rabbit Monoclonal Antibody
Catalog # ABO13415**Specification****Anti-NSD3/WHSC1L1 Rabbit Monoclonal Antibody - Product Information**

Application	WB, FC
Primary Accession	Q9BZ95
Host	Rabbit
Isotype	Rabbit IgG
Reactivity	Rat, Human, Mouse
Clonality	Monoclonal
Format	Liquid

Description

Anti-NSD3/WHSC1L1 Rabbit Monoclonal Antibody . Tested in WB, Flow Cytometry applications. This antibody reacts with Human, Mouse, Rat.

Anti-NSD3/WHSC1L1 Rabbit Monoclonal Antibody - Additional Information

Gene ID 54904

Other Names

Histone-lysine N-methyltransferase NSD3, 2.1.1.370, 2.1.1.371, Nuclear SET domain-containing protein 3, Protein whistle, WHSC1-like 1 isoform 9 with methyltransferase activity to lysine, Wolf-Hirschhorn syndrome candidate 1-like protein 1, WHSC1-like protein 1, NSD3 (http://www.genenames.org/cgi-bin/gene_symbol_report?hgnc_id=12767), WHSC1L1

Calculated MW

161613 MW KDa

Application Details

WB 1:1000-1:5000
FC 1:30

Subcellular Localization

Nucleus. Chromosome.

Tissue Specificity

Highly expressed in brain, heart and skeletal muscle. Expressed at lower level in liver and lung..

Contents

Rabbit IgG in phosphate buffered saline, pH 7.4, 150mM NaCl, 0.02% sodium azide and 50% glycerol, 0.4-0.5mg/ml BSA.

Immunogen

A synthesized peptide derived from human NSD3

Purification

Affinity-chromatography

Storage

Store at -20°C for one year. For short term storage and frequent use, store at 4°C for up to one month. Avoid repeated freeze-thaw cycles.

Anti-NSD3/WHSC1L1 Rabbit Monoclonal Antibody - Protein Information

Name NSD3 ([HGNC:12767](#))

Synonyms WHSC1L1

Function

Histone methyltransferase. Preferentially dimethylates 'Lys- 4' and 'Lys-27' of histone H3 forming H3K4me2 and H3K27me2. H3 'Lys-4' methylation represents a specific tag for epigenetic transcriptional activation, while 'Lys-27' is a mark for transcriptional repression.

Cellular Location

Nucleus. Chromosome.

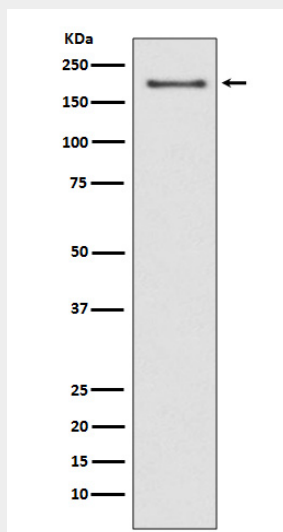
Tissue Location

Highly expressed in brain, heart and skeletal muscle. Expressed at lower level in liver and lung

Anti-NSD3/WHSC1L1 Rabbit Monoclonal Antibody - Protocols

Provided below are standard protocols that you may find useful for product applications.

- [Western Blot](#)
- [Blocking Peptides](#)
- [Dot Blot](#)
- [Immunohistochemistry](#)
- [Immunofluorescence](#)
- [Immunoprecipitation](#)
- [Flow Cytometry](#)
- [Cell Culture](#)

Anti-NSD3/WHSC1L1 Rabbit Monoclonal Antibody - Images

Western blot analysis of NSD3 expression in MCF-7 cell lysate.