

Anti-CD21 CR2 Rabbit Monoclonal Antibody
Catalog # ABO13420**Specification**

Anti-CD21 CR2 Rabbit Monoclonal Antibody - Product Information

Application	WB, IHC, IF, ICC, IP, FC
Primary Accession	P20023
Host	Rabbit
Isotype	Rabbit IgG
Reactivity	Human, Mouse
Clonality	Monoclonal
Format	Liquid

Description

Anti-CD21 CR2 Rabbit Monoclonal Antibody . Tested in WB, IHC, ICC/IF, IP, Flow Cytometry applications. This antibody reacts with Human, Mouse.

Anti-CD21 CR2 Rabbit Monoclonal Antibody - Additional Information

Gene ID 1380

Other Names

Complement receptor type 2, Cr2, Complement C3d receptor, Epstein-Barr virus receptor, EBV receptor, CD21, CR2, C3DR

Calculated MW

112916 MW KDa

Application Details

WB 1:1000-1:5000
IHC 1:50-1:200
ICC/IF 1:50-1:200
IP 1:50
FC 1:50

Subcellular Localization

Membrane; Single-pass type I membrane protein.

Tissue Specificity

Mature B-lymphocytes, T-lymphocytes, pharyngeal epithelial cells, astrocytes and follicular dendritic cells of the spleen.

Contents

Rabbit IgG in phosphate buffered saline, pH 7.4, 150mM NaCl, 0.02% sodium azide and 50% glycerol, 0.4-0.5mg/ml BSA.

Immunogen

A synthesized peptide derived from human CD21

Purification

Affinity-chromatography

Storage

Store at -20°C for one year. For short term storage and frequent use, store at 4°C for

**up to one month. Avoid repeated
freeze-thaw cycles.**

Anti-CD21 CR2 Rabbit Monoclonal Antibody - Protein Information

Name CR2

Synonyms C3DR

Function

Serves as a receptor for various ligands including complement component CD3d, HNRNPU OR IFNA1 (PubMed:1849076, PubMed:21527715, PubMed:7753047). When C3d is bound to antigens, attaches to C3d on B- cell surface and thereby facilitates the recognition and uptake of antigens by B-cells (PubMed:21527715). This interaction enhances B-cell activation and subsequent immune responses. Forms a complex with several partners on the surface of B-cells including CD19, FCRL5 and CD81, to form the B-cell coreceptor complex that plays a crucial role in B-cell activation and signaling (PubMed:1383329, PubMed:30107486). Also induces specific intracellular signaling separately from the BCR and CD19 by activating the tyrosine kinase SRC, which then phosphorylates nucleolin/NCL and triggers AKT and GSK3 kinase activities in a SYK/CD19-independent manner (PubMed:12938232). Acts as a ligand for CD23 (FcepsilonRII), a low-affinity receptor for IgE, which is expressed on B-cells and other immune cells, and thus participates in the regulation of IgE production (PubMed:1386409).

Cellular Location

Cell membrane; Single-pass type I membrane protein

Tissue Location

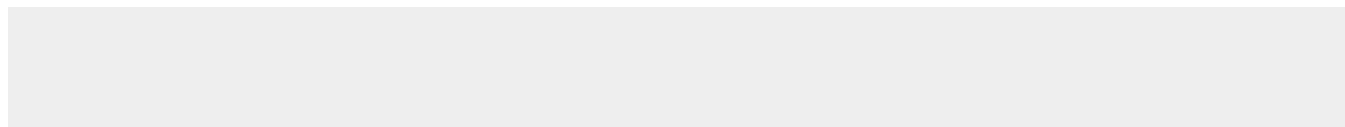
Mature B-lymphocytes, T-lymphocytes, pharyngeal epithelial cells, astrocytes and follicular dendritic cells of the spleen

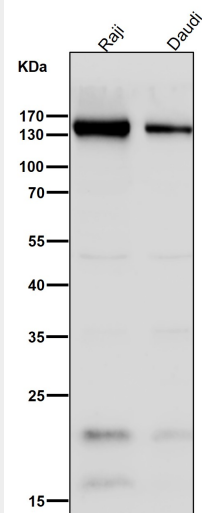
Anti-CD21 CR2 Rabbit Monoclonal Antibody - Protocols

Provided below are standard protocols that you may find useful for product applications.

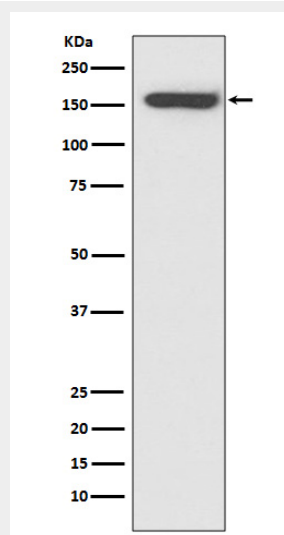
- [Western Blot](#)
- [Blocking Peptides](#)
- [Dot Blot](#)
- [Immunohistochemistry](#)
- [Immunofluorescence](#)
- [Immunoprecipitation](#)
- [Flow Cytometry](#)
- [Cell Culture](#)

Anti-CD21 CR2 Rabbit Monoclonal Antibody - Images

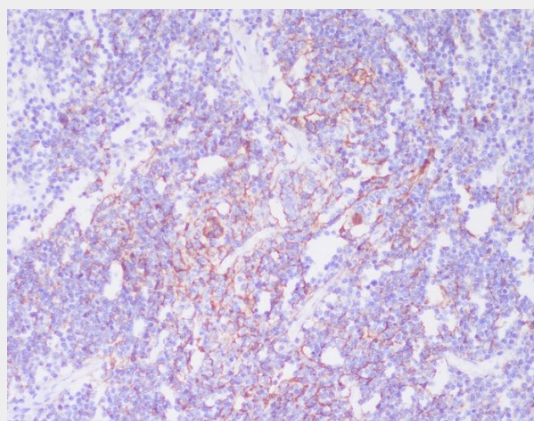




All lanes use the Antibody at 1:3K dilution for 1 hour at room temperature.



Western blot analysis of CD21 expression in Raji cell lysate.



Immunohistochemical analysis of paraffin-embedded human spleen, using CD21 Antibody.