

**Anti-CD68/Sr D1 Rabbit Monoclonal Antibody**  
Catalog # ABO13431

**Specification**

---

**Anti-CD68/Sr D1 Rabbit Monoclonal Antibody - Product Information**

Application	WB
Primary Accession	<a href="#">P34810</a>
Host	Rabbit
Isotype	Rabbit IgG
Reactivity	Rat, Human, Mouse
Clonality	Monoclonal
Format	Liquid

**Description**

Anti-CD68/Sr D1 Rabbit Monoclonal Antibody . Tested in WB application. This antibody reacts with Human, Mouse, Rat.

**Anti-CD68/Sr D1 Rabbit Monoclonal Antibody - Additional Information**

**Gene ID** 968

**Other Names**

Macrosialin, Gp110, CD68, CD68

**Calculated MW**

37408 MW KDa

**Application Details**

WB 1:500-1:1000

**Subcellular Localization**

Isoform Short: Cell membrane; Single-pass type I membrane protein.

**Tissue Specificity**

Highly expressed by blood monocytes and tissue macrophages. Also expressed in lymphocytes, fibroblasts and endothelial cells. Expressed in many tumor cell lines which could allow them to attach to selectins on vascular endothelium, facilitating their dissemination to secondary sites..

**Contents**

Rabbit IgG in phosphate buffered saline, pH 7.4, 150mM NaCl, 0.02% sodium azide and 50% glycerol, 0.4-0.5mg/ml BSA.

**Immunogen**

A synthesized peptide derived from human CD68

**Purification**

Affinity-chromatography

Storage

**Store at -20°C for one year. For short term storage and frequent use, store at 4°C for**

up to one month. Avoid repeated  
freeze-thaw cycles.

## Anti-CD68/Sr D1 Rabbit Monoclonal Antibody - Protein Information

**Name** CD68

### Function

Could play a role in phagocytic activities of tissue macrophages, both in intracellular lysosomal metabolism and extracellular cell-cell and cell-pathogen interactions. Binds to tissue- and organ-specific lectins or selectins, allowing homing of macrophage subsets to particular sites. Rapid recirculation of CD68 from endosomes and lysosomes to the plasma membrane may allow macrophages to crawl over selectin-bearing substrates or other cells.

### Cellular Location

[Isoform Short]: Cell membrane; Single-pass type I membrane protein

### Tissue Location

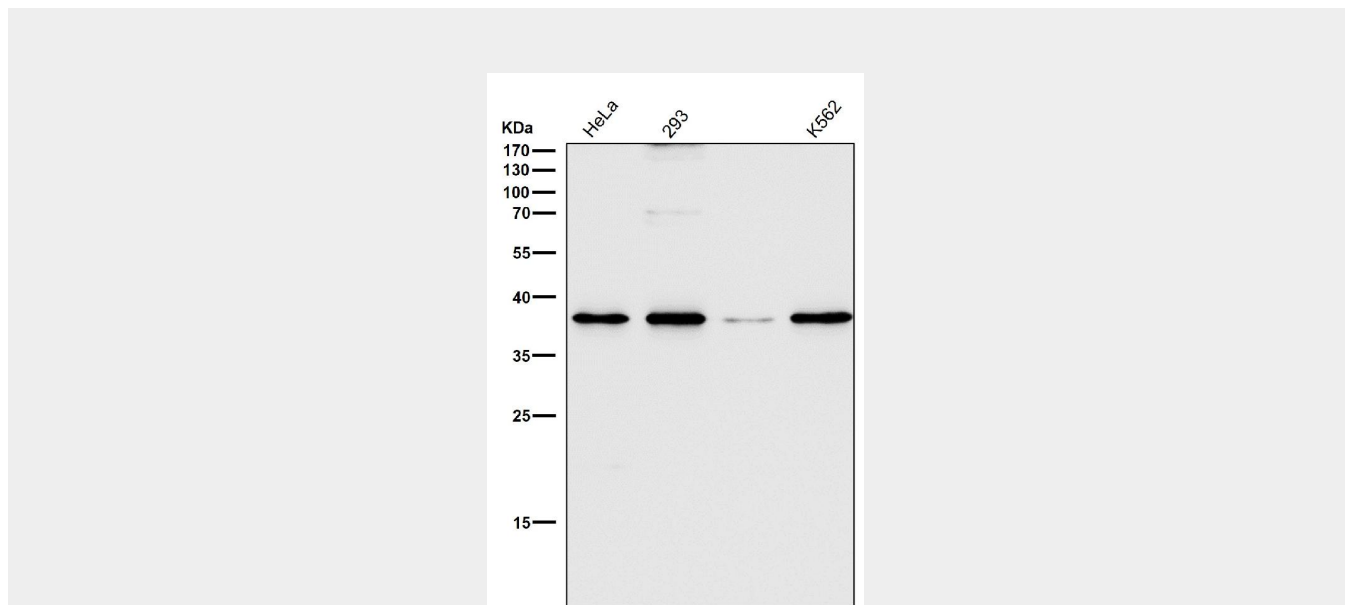
Highly expressed by blood monocytes and tissue macrophages. Also expressed in lymphocytes, fibroblasts and endothelial cells. Expressed in many tumor cell lines which could allow them to attach to selectins on vascular endothelium, facilitating their dissemination to secondary sites.

## Anti-CD68/Sr D1 Rabbit Monoclonal Antibody - Protocols

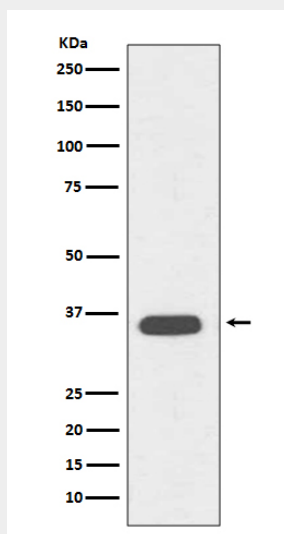
Provided below are standard protocols that you may find useful for product applications.

- [Western Blot](#)
- [Blocking Peptides](#)
- [Dot Blot](#)
- [Immunohistochemistry](#)
- [Immunofluorescence](#)
- [Immunoprecipitation](#)
- [Flow Cytometry](#)
- [Cell Culture](#)

## Anti-CD68/Sr D1 Rabbit Monoclonal Antibody - Images



All lanes use the Antibody at 1:2K dilution for 1 hour at room temperature.



Western blot analysis of CD68 expression in Jurkat cell lysate.