

Anti-IRF6 Rabbit Monoclonal Antibody
Catalog # ABO13448**Specification**

Anti-IRF6 Rabbit Monoclonal Antibody - Product Information

Application	WB, IHC, IF, ICC
Primary Accession	O14896
Host	Rabbit
Isotype	Rabbit IgG
Reactivity	Rat, Human, Mouse
Clonality	Monoclonal
Format	Liquid

Description

Anti-IRF6 Rabbit Monoclonal Antibody . Tested in WB, IHC, ICC/IF applications. This antibody reacts with Human, Mouse, Rat.

Anti-IRF6 Rabbit Monoclonal Antibody - Additional Information

Gene ID 3664

Other Names

Interferon regulatory factor 6, IRF-6, IRF6

Calculated MW

53130 MW KDa

Application Details

WB 1:1000-1:2000
IHC 1:50-1:200
ICC/IF 1:50-1:200

Subcellular Localization

Nucleus. Cytoplasm. Translocates to nucleus in response to an activating signal..

Tissue Specificity

Expressed in normal mammary epithelial cells. Expression is reduced or absent in breast carcinomas..

Contents

Rabbit IgG in phosphate buffered saline, pH 7.4, 150mM NaCl, 0.02% sodium azide and 50% glycerol, 0.4-0.5mg/ml BSA.

Immunogen

A synthesized peptide derived from human IRF6

Purification

Affinity-chromatography

Storage

Store at -20°C for one year. For short term storage and frequent use, store at 4°C for up to one month. Avoid repeated

freeze-thaw cycles.

Anti-IRF6 Rabbit Monoclonal Antibody - Protein Information

Name IRF6

Function

Probable DNA-binding transcriptional activator. Key determinant of the keratinocyte proliferation-differentiation switch involved in appropriate epidermal development (By similarity). Plays a role in regulating mammary epithelial cell proliferation (By similarity). May regulate WDR65 transcription (By similarity).

Cellular Location

Nucleus. Cytoplasm Note=Translocates to nucleus in response to an activating signal

Tissue Location

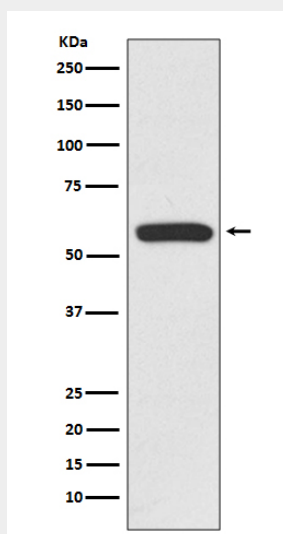
Expressed in normal mammary epithelial cells. Expression is reduced or absent in breast carcinomas

Anti-IRF6 Rabbit Monoclonal Antibody - Protocols

Provided below are standard protocols that you may find useful for product applications.

- [Western Blot](#)
- [Blocking Peptides](#)
- [Dot Blot](#)
- [Immunohistochemistry](#)
- [Immunofluorescence](#)
- [Immunoprecipitation](#)
- [Flow Cytometry](#)
- [Cell Culture](#)

Anti-IRF6 Rabbit Monoclonal Antibody - Images



Western blot analysis of IRF6 expression in Jurkat cell lysate.