

Anti-IRF2 Rabbit Monoclonal Antibody
Catalog # ABO13459**Specification**

Anti-IRF2 Rabbit Monoclonal Antibody - Product Information

Application	WB, IHC, IF, ICC
Primary Accession	P14316
Host	Rabbit
Isotype	Rabbit IgG
Reactivity	Human, Mouse
Clonality	Monoclonal
Format	Liquid

Description

Anti-IRF2 Rabbit Monoclonal Antibody . Tested in WB, IHC, ICC/IF applications. This antibody reacts with Human, Mouse.

Anti-IRF2 Rabbit Monoclonal Antibody - Additional Information

Gene ID 3660

Other Names

Interferon regulatory factor 2, IRF-2, IRF2

Calculated MW

39354 MW KDa

Application Details

WB 1:500-1:1000
IHC 1:50-1:200
ICC/IF 1:50-1:200

Subcellular Localization

Nucleus.

Tissue Specificity

Expressed throughout the epithelium of the colon. Also expressed in lamina propria..

Contents

Rabbit IgG in phosphate buffered saline, pH 7.4, 150mM NaCl, 0.02% sodium azide and 50% glycerol, 0.4-0.5mg/ml BSA.

Immunogen

A synthesized peptide derived from human IRF2

Purification

Affinity-chromatography

Storage

Store at -20°C for one year. For short term storage and frequent use, store at 4°C for up to one month. Avoid repeated freeze-thaw cycles.

Anti-IRF2 Rabbit Monoclonal Antibody - Protein Information

Name IRF2

Function

Specifically binds to the upstream regulatory region of type I IFN and IFN-inducible MHC class I genes (the interferon consensus sequence (ICS)) and represses those genes. Also acts as an activator for several genes including H4 and IL7. Constitutively binds to the ISRE promoter to activate IL7. Involved in cell cycle regulation through binding the site II (HiNF-M) promoter region of H4 and activating transcription during cell growth. Antagonizes IRF1 transcriptional activation.

Cellular Location

Nucleus.

Tissue Location

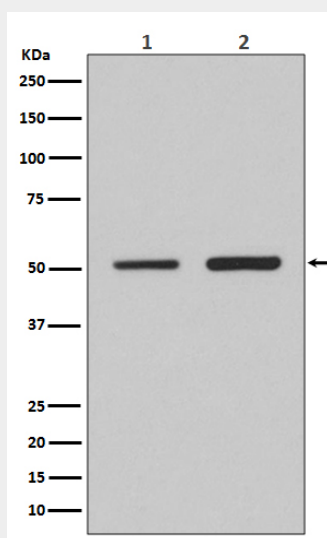
Expressed throughout the epithelium of the colon. Also expressed in lamina propria.

Anti-IRF2 Rabbit Monoclonal Antibody - Protocols

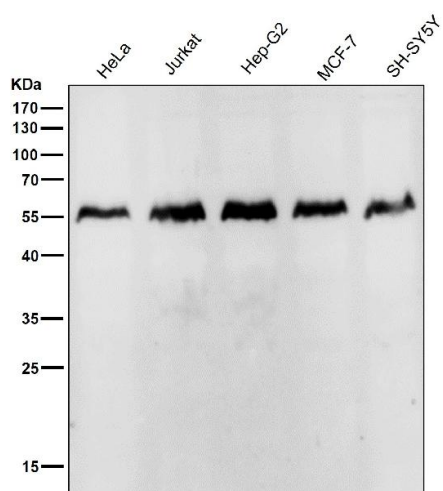
Provided below are standard protocols that you may find useful for product applications.

- [Western Blot](#)
- [Blocking Peptides](#)
- [Dot Blot](#)
- [Immunohistochemistry](#)
- [Immunofluorescence](#)
- [Immunoprecipitation](#)
- [Flow Cytometry](#)
- [Cell Culture](#)

Anti-IRF2 Rabbit Monoclonal Antibody - Images



Western blot analysis of IRF2 expression in (1) HeLa cell lysate; (2) 3T3 cell lysate.



All lanes use the Antibody at 1:2K dilution for 1 hour at room temperature.