

Anti-MEK5 Rabbit Monoclonal Antibody
Catalog # ABO13465**Specification**

Anti-MEK5 Rabbit Monoclonal Antibody - Product Information

| | |
|-------------------|------------------------|
| Application | WB, IF, ICC |
| Primary Accession | Q13163 |
| Host | Rabbit |
| Isotype | Rabbit IgG |
| Reactivity | Human |
| Clonality | Monoclonal |
| Format | Liquid |

Description

Anti-MEK5 Rabbit Monoclonal Antibody . Tested in WB, ICC/IF applications. This antibody reacts with Human.

Anti-MEK5 Rabbit Monoclonal Antibody - Additional Information

Gene ID 5607

Other Names

Dual specificity mitogen-activated protein kinase kinase 5, MAP kinase kinase 5, MAPKK 5, 2.7.12.2, MAPK/ERK kinase 5, MEK 5, MAP2K5, MEK5, MKK5, PRKMK5

Calculated MW

50112 MW KDa

Application Details

WB 1:1000-1:2000
ICC/IF 1:50-1:200

Tissue Specificity

Expressed in many adult tissues. Abundant in heart and skeletal muscle.

Contents

Rabbit IgG in phosphate buffered saline, pH 7.4, 150mM NaCl, 0.02% sodium azide and 50% glycerol, 0.4-0.5mg/ml BSA.

Immunogen

A synthesized peptide derived from human MEK5

Purification

Affinity-chromatography

Storage

Store at -20°C for one year. For short term storage and frequent use, store at 4°C for up to one month. Avoid repeated freeze-thaw cycles.

Anti-MEK5 Rabbit Monoclonal Antibody - Protein Information

Name MAP2K5

Synonyms MEK5, MKK5, PRKMK5

Function

Acts as a scaffold for the formation of a ternary MAP3K2/MAP3K3-MAP3K5-MAPK7 signaling complex. Activation of this pathway appears to play a critical role in protecting cells from stress-induced apoptosis, neuronal survival and cardiac development and angiogenesis. As part of the MAPK/ERK signaling pathway, acts as a negative regulator of apoptosis in cardiomyocytes via promotion of STUB1/CHIP-mediated ubiquitination and degradation of ICER-type isoforms of CREM (By similarity).

Tissue Location

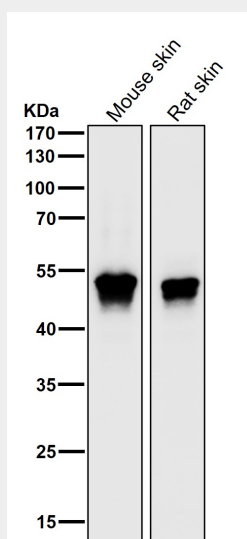
Expressed in many adult tissues. Abundant in heart and skeletal muscle

Anti-MEK5 Rabbit Monoclonal Antibody - Protocols

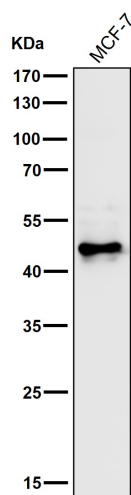
Provided below are standard protocols that you may find useful for product applications.

- [Western Blot](#)
- [Blocking Peptides](#)
- [Dot Blot](#)
- [Immunohistochemistry](#)
- [Immunofluorescence](#)
- [Immunoprecipitation](#)
- [Flow Cytometry](#)
- [Cell Culture](#)

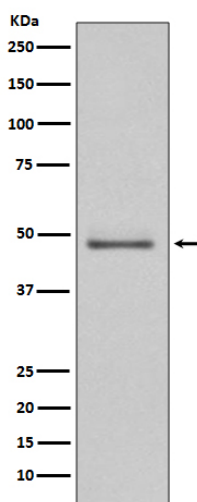
Anti-MEK5 Rabbit Monoclonal Antibody - Images



All lanes use the Antibody at 1:2K dilution for 1 hour at room temperature.



All lanes use the Antibody at 1:2K dilution for 1 hour at room temperature.



Western blot analysis of MEK5 expression in HeLa cell lysate.