

Anti-MEK3 MAP2K3 Rabbit Monoclonal Antibody
Catalog # ABO13468**Specification****Anti-MEK3 MAP2K3 Rabbit Monoclonal Antibody - Product Information**

Application	WB, IHC, IF, ICC, IP, FC
Primary Accession	P46734
Host	Rabbit
Isotype	Rabbit IgG
Reactivity	Rat, Human, Mouse
Clonality	Monoclonal
Format	Liquid

Description

Anti-MEK3 MAP2K3 Rabbit Monoclonal Antibody . Tested in WB, IHC, ICC/IF, IP, Flow Cytometry applications. This antibody reacts with Human, Mouse, Rat.

Anti-MEK3 MAP2K3 Rabbit Monoclonal Antibody - Additional Information

Gene ID 5606

Other Names

Dual specificity mitogen-activated protein kinase kinase 3, MAP kinase kinase 3, MAPKK 3, 2.7.12.2, MAPK/ERK kinase 3, MEK 3, Stress-activated protein kinase kinase 2, SAPK kinase 2, SAPKK-2, SAPKK2, MAP2K3, MEK3, MKK3, PRKMK3, SKK2

Calculated MW

39318 MW KDa

Application Details

WB 1:1000-1:2000
IHC 1:50-1:200
ICC/IF 1:50-1:200
IP 1:50
FC 1:500

Tissue Specificity

Abundant expression is seen in the skeletal muscle. It is also widely expressed in other tissues.

Contents

Rabbit IgG in phosphate buffered saline, pH 7.4, 150mM NaCl, 0.02% sodium azide and 50% glycerol, 0.4-0.5mg/ml BSA.

Immunogen

A synthesized peptide derived from human MEK3

Purification

Affinity-chromatography

Storage

Store at -20°C for one year. For short term storage and frequent use, store at 4°C for up to one month. Avoid repeated freeze-thaw cycles.

Anti-MEK3 MAP2K3 Rabbit Monoclonal Antibody - Protein Information

Name MAP2K3

Synonyms MEK3, MKK3, PRKMK3, SKK2

Function

Dual specificity kinase. Is activated by cytokines and environmental stress in vivo. Catalyzes the concomitant phosphorylation of a threonine and a tyrosine residue in the MAP kinase p38. Part of a signaling cascade that begins with the activation of the adrenergic receptor ADRA1B and leads to the activation of MAPK14.

Tissue Location

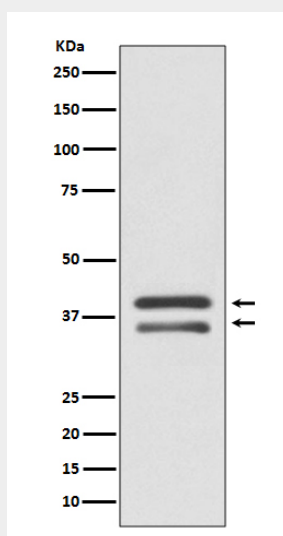
Abundant expression is seen in the skeletal muscle. It is also widely expressed in other tissues

Anti-MEK3 MAP2K3 Rabbit Monoclonal Antibody - Protocols

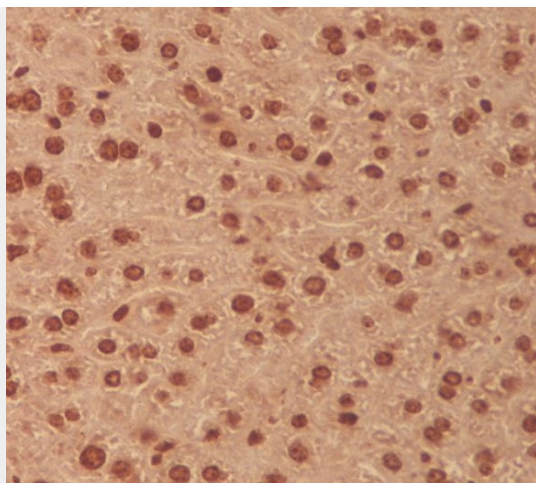
Provided below are standard protocols that you may find useful for product applications.

- [Western Blot](#)
- [Blocking Peptides](#)
- [Dot Blot](#)
- [Immunohistochemistry](#)
- [Immunofluorescence](#)
- [Immunoprecipitation](#)
- [Flow Cytometry](#)
- [Cell Culture](#)

Anti-MEK3 MAP2K3 Rabbit Monoclonal Antibody - Images



Western blot analysis of MEK3 expression in HepG2 cell lysate.



Immunohistochemical analysis of paraffin-embedded human liver, using MEK3 Antibody.