

**Anti-SDF1 CXCL12 Rabbit Monoclonal Antibody**  
**Catalog # ABO13490****Specification**

---

**Anti-SDF1 CXCL12 Rabbit Monoclonal Antibody - Product Information**

Application	WB, IF, ICC
Primary Accession	<a href="#">P48061</a>
Host	Rabbit
Isotype	Rabbit IgG
Reactivity	Human
Clonality	Monoclonal
Format	Liquid

**Description**

Anti-SDF1 CXCL12 Rabbit Monoclonal Antibody . Tested in WB, ICC/IF applications. This antibody reacts with Human.

**Anti-SDF1 CXCL12 Rabbit Monoclonal Antibody - Additional Information**

**Gene ID** 6387

**Other Names**

Stromal cell-derived factor 1, SDF-1, hSDF-1, C-X-C motif chemokine 12, Interchrine reduced in hepatomas, IRH, hIRH, Pre-B cell growth-stimulating factor, PBSF, SDF-1-beta(3-72), SDF-1-alpha(3-67), CXCL12, SDF1, SDF1A, SDF1B

**Calculated MW**

10666 MW KDa

**Application Details**

WB 1:1000-1:5000<br>ICC/IF 1:50-1:200

**Subcellular Localization**

Secreted.

**Tissue Specificity**

Isoform Alpha and isoform Beta are ubiquitously expressed, with highest levels detected in liver, pancreas and spleen. Isoform Gamma is mainly expressed in heart, with weak expression detected in several other tissues. Isoform Delta, isoform Epsilon and isoform Theta have highest expression levels in pancreas, with lower levels detected in heart, kidney, liver and spleen..

**Contents**

Rabbit IgG in phosphate buffered saline, pH 7.4, 150mM NaCl, 0.02% sodium azide and 50% glycerol, 0.4-0.5mg/ml BSA.

**Immunogen**

A synthesized peptide derived from human SDF1

**Purification**

Affinity-chromatography

**Storage**

**Store at -20°C for one year. For short term storage and frequent use, store at 4°C for up to one month. Avoid repeated freeze-thaw cycles.**

**Anti-SDF1 CXCL12 Rabbit Monoclonal Antibody - Protein Information**

**Name** CXCL12

**Synonyms** SDF1, SDF1A, SDF1B

**Function**

Chemoattractant active on T-lymphocytes and monocytes but not neutrophils. Activates the C-X-C chemokine receptor CXCR4 to induce a rapid and transient rise in the level of intracellular calcium ions and chemotaxis. SDF-1-beta(3-72) and SDF-1-alpha(3-67) show a reduced chemotactic activity. Binding to cell surface proteoglycans seems to inhibit formation of SDF-1-alpha(3-67) and thus to preserve activity on local sites. Also binds to atypical chemokine receptor ACKR3, which activates the beta-arrestin pathway and acts as a scavenger receptor for SDF-1. Binds to the allosteric site (site 2) of integrins and activates integrins ITGAV:ITGB3, ITGA4:ITGB1 and ITGA5:ITGB1 in a CXCR4-independent manner (PubMed:<a href="http://www.uniprot.org/citations/29301984" target="\_blank">29301984</a>). Acts as a positive regulator of monocyte migration and a negative regulator of monocyte adhesion via the LYN kinase. Stimulates migration of monocytes and T- lymphocytes through its receptors, CXCR4 and ACKR3, and decreases monocyte adherence to surfaces coated with ICAM-1, a ligand for beta-2 integrins. SDF1A/CXCR4 signaling axis inhibits beta-2 integrin LFA-1 mediated adhesion of monocytes to ICAM-1 through LYN kinase. Inhibits CXCR4-mediated infection by T-cell line-adapted HIV-1. Plays a protective role after myocardial infarction. Induces down-regulation and internalization of ACKR3 expressed in various cells. Has several critical functions during embryonic development; required for B-cell lymphopoiesis, myelopoiesis in bone marrow and heart ventricular septum formation. Stimulates the proliferation of bone marrow-derived B-cell progenitors in the presence of IL7 as well as growth of stromal cell- dependent pre-B-cells (By similarity).

**Cellular Location**

Secreted.

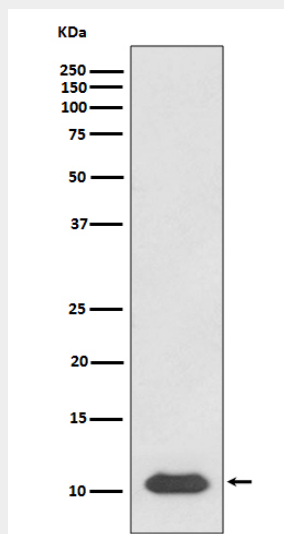
**Tissue Location**

Isoform Alpha and isoform Beta are ubiquitously expressed, with highest levels detected in liver, pancreas and spleen Isoform Gamma is mainly expressed in heart, with weak expression detected in several other tissues. Isoform Delta, isoform Epsilon and isoform Theta have highest expression levels in pancreas, with lower levels detected in heart, kidney, liver and spleen

**Anti-SDF1 CXCL12 Rabbit Monoclonal Antibody - Protocols**

Provided below are standard protocols that you may find useful for product applications.

- [Western Blot](#)
- [Blocking Peptides](#)
- [Dot Blot](#)
- [Immunohistochemistry](#)
- [Immunofluorescence](#)
- [Immunoprecipitation](#)
- [Flow Cytometry](#)
- [Cell Culture](#)

**Anti-SDF1 CXCL12 Rabbit Monoclonal Antibody - Images**

Western blot analysis of SDF1 expression in Jurkat cell lysate.