

**Anti-Bmi1 Rabbit Monoclonal Antibody**  
**Catalog # ABO13494****Specification**

---

**Anti-Bmi1 Rabbit Monoclonal Antibody - Product Information**

Application	WB, IHC, IF, ICC
Primary Accession	<a href="#">P35226</a>
Host	Rabbit
Isotype	Rabbit IgG
Reactivity	Rat, Human
Clonality	Monoclonal
Format	Liquid

**Description**

Anti-Bmi1 Rabbit Monoclonal Antibody . Tested in WB, IHC, ICC/IF applications. This antibody reacts with Human, Rat.

**Anti-Bmi1 Rabbit Monoclonal Antibody - Additional Information**

**Gene ID** 100532731;648

**Other Names**

Polycomb complex protein BMI-1, Polycomb group RING finger protein 4, RING finger protein 51, BMI1, PCGF4, RNF51

**Calculated MW**

36949 MW KDa

**Application Details**

WB 1:500-1:2000<br>IHC 1:50-1:200<br>ICC/IF 1:50-1:200

**Subcellular Localization**

Nucleus. Cytoplasm.

**Contents**

Rabbit IgG in phosphate buffered saline, pH 7.4, 150mM NaCl, 0.02% sodium azide and 50% glycerol, 0.4-0.5mg/ml BSA.

**Immunogen**

A synthesized peptide derived from human Bmi1

**Purification**

Affinity-chromatography

**Storage**

**Store at -20°C for one year. For short term storage and frequent use, store at 4°C for up to one month. Avoid repeated freeze-thaw cycles.**

**Anti-Bmi1 Rabbit Monoclonal Antibody - Protein Information**

**Name** BMI1**Synonyms** PCGF4, RNF51**Function**

Component of a Polycomb group (PcG) multiprotein PRC1-like complex, a complex class required to maintain the transcriptionally repressive state of many genes, including Hox genes, throughout development. PcG PRC1 complex acts via chromatin remodeling and modification of histones; it mediates monoubiquitination of histone H2A 'Lys-119', rendering chromatin heritably changed in its expressibility (PubMed:<a href="http://www.uniprot.org/citations/15386022" target="\_blank">15386022</a>, PubMed:<a href="http://www.uniprot.org/citations/16359901" target="\_blank">16359901</a>, PubMed:<a href="http://www.uniprot.org/citations/16714294" target="\_blank">16714294</a>, PubMed:<a href="http://www.uniprot.org/citations/21772249" target="\_blank">21772249</a>, PubMed:<a href="http://www.uniprot.org/citations/25355358" target="\_blank">25355358</a>, PubMed:<a href="http://www.uniprot.org/citations/26151332" target="\_blank">26151332</a>, PubMed:<a href="http://www.uniprot.org/citations/27827373" target="\_blank">27827373</a>). The complex composed of RNF2, UB2D3 and BMI1 binds nucleosomes, and has activity only with nucleosomal histone H2A (PubMed:<a href="http://www.uniprot.org/citations/21772249" target="\_blank">21772249</a>, PubMed:<a href="http://www.uniprot.org/citations/25355358" target="\_blank">25355358</a>). In the PRC1-like complex, regulates the E3 ubiquitin-protein ligase activity of RNF2/RING2 (PubMed:<a href="http://www.uniprot.org/citations/15386022" target="\_blank">15386022</a>, PubMed:<a href="http://www.uniprot.org/citations/21772249" target="\_blank">21772249</a>, PubMed:<a href="http://www.uniprot.org/citations/26151332" target="\_blank">26151332</a>).

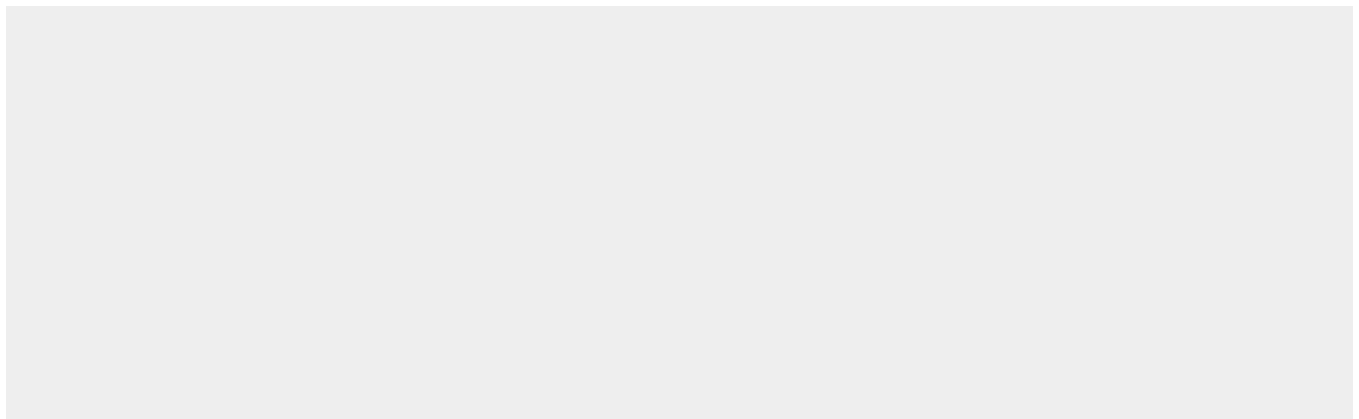
**Cellular Location**

Nucleus. Cytoplasm

**Anti-Bmi1 Rabbit Monoclonal Antibody - Protocols**

Provided below are standard protocols that you may find useful for product applications.

- [Western Blot](#)
- [Blocking Peptides](#)
- [Dot Blot](#)
- [Immunohistochemistry](#)
- [Immunofluorescence](#)
- [Immunoprecipitation](#)
- [Flow Cytometry](#)
- [Cell Culture](#)

**Anti-Bmi1 Rabbit Monoclonal Antibody - Images**

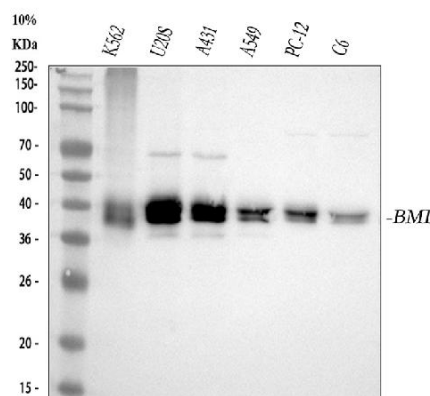


Figure 1. Western blot analysis of Bmi1 using anti-Bmi1 antibody (M00313).

Electrophoresis was performed on a 5-20% SDS-PAGE gel at 70V (Stacking gel) / 90V (Resolving gel) for 2-3 hours. The sample well of each lane was loaded with 30 ug of sample under reducing conditions.

Lane 1: human K562 whole cell lysates,

Lane 2: human U2OS whole cell lysates,

Lane 3: human A431 whole cell lysates,

Lane 4: human A549 whole cell lysates,

Lane 5: rat PC-12 whole cell lysates,

Lane 6: rat C6 whole cell lysates.

After electrophoresis, proteins were transferred to a nitrocellulose membrane at 150 mA for 50-90 minutes. Blocked the membrane with 5% non-fat milk/TBS for 1.5 hour at RT. The membrane was incubated with rabbit anti-Bmi1 antigen affinity purified monoclonal antibody (Catalog # M00313) at 1:500 overnight at 4°C, then washed with TBS-0.1%Tween 3 times with 5 minutes each and probed with a goat anti-rabbit IgG-HRP secondary antibody at a dilution of 1:5000 for 1.5 hour at RT. The signal is developed using an Enhanced Chemiluminescent detection (ECL) kit (Catalog # EK1002) with Tanon 5200 system. A specific band was detected for Bmi1 at approximately 40 kDa. The expected band size for Bmi1 is at 37 kDa.