

**Anti-RAGE Rabbit Monoclonal Antibody**  
**Catalog # ABO13500****Specification**

---

**Anti-RAGE Rabbit Monoclonal Antibody - Product Information**

Application	WB
Primary Accession	<a href="#">Q15109</a>
Host	Rabbit
Isotype	Rabbit IgG
Reactivity	Rat, Human, Mouse
Clonality	Monoclonal
Format	Liquid

**Description**

Anti-RAGE Rabbit Monoclonal Antibody . Tested in WB application. This antibody reacts with Human, Mouse, Rat.

**Anti-RAGE Rabbit Monoclonal Antibody - Additional Information**

**Gene ID** 177

**Other Names**

Advanced glycosylation end product-specific receptor, Receptor for advanced glycosylation end products, AGER, RAGE

**Calculated MW**

42803 MW KDa

**Application Details**

WB 1:500-1:2000

**Subcellular Localization**

Isoform 1: Cell membrane; Single-pass type I membrane protein.

**Tissue Specificity**

Endothelial cells.

**Contents**

Rabbit IgG in phosphate buffered saline, pH 7.4, 150mM NaCl, 0.02% sodium azide and 50% glycerol, 0.4-0.5mg/ml BSA.

**Immunogen**

A synthesized peptide derived from human RAGE

**Purification**

Affinity-chromatography

Storage

**Store at -20°C for one year. For short term storage and frequent use, store at 4°C for up to one month. Avoid repeated**

**freeze-thaw cycles.****Anti-RAGE Rabbit Monoclonal Antibody - Protein Information****Name** AGER**Synonyms** RAGE**Function**

Cell surface pattern recognition receptor that senses endogenous stress signals with a broad ligand repertoire including advanced glycation end products, S100 proteins, high-mobility group box 1 protein/HMGB1, amyloid beta/APP oligomers, nucleic acids, histones, phospholipids and glycosaminoglycans (PubMed: <a href="http://www.uniprot.org/citations/27572515" target="\_blank">27572515</a>, PubMed: <a href="http://www.uniprot.org/citations/28515150" target="\_blank">28515150</a>, PubMed: <a href="http://www.uniprot.org/citations/34743181" target="\_blank">34743181</a>, PubMed: <a href="http://www.uniprot.org/citations/35974093" target="\_blank">35974093</a>, PubMed: <a href="http://www.uniprot.org/citations/24081950" target="\_blank">24081950</a>). Advanced glycosylation end products are nonenzymatically glycosylated proteins which accumulate in vascular tissue in aging and at an accelerated rate in diabetes (PubMed: <a href="http://www.uniprot.org/citations/21565706" target="\_blank">21565706</a>). These ligands accumulate at inflammatory sites during the pathogenesis of various diseases including diabetes, vascular complications, neurodegenerative disorders and cancers, and RAGE transduces their binding into pro-inflammatory responses. Upon ligand binding, uses TIRAP and MYD88 as adapters to transduce the signal ultimately leading to the induction of inflammatory cytokines IL6, IL8 and TNFalpha through activation of NF-kappa-B (PubMed: <a href="http://www.uniprot.org/citations/21829704" target="\_blank">21829704</a>, PubMed: <a href="http://www.uniprot.org/citations/33436632" target="\_blank">33436632</a>). Interaction with S100A12 on endothelium, mononuclear phagocytes, and lymphocytes triggers cellular activation, with generation of key pro-inflammatory mediators (PubMed: <a href="http://www.uniprot.org/citations/19386136" target="\_blank">19386136</a>). Interaction with S100B after myocardial infarction may play a role in myocyte apoptosis by activating ERK1/2 and p53/TP53 signaling (By similarity). Contributes to the translocation of amyloid- beta peptide (ABPP) across the cell membrane from the extracellular to the intracellular space in cortical neurons (PubMed: <a href="http://www.uniprot.org/citations/19906677" target="\_blank">19906677</a>). ABPP- initiated RAGE signaling, especially stimulation of p38 mitogen- activated protein kinase (MAPK), has the capacity to drive a transport system delivering ABPP as a complex with RAGE to the intraneuronal space. Participates in endothelial albumin transcytosis together with HMGB1 through the RAGE/SRC/Caveolin-1 pathway, leading to endothelial hyperpermeability (PubMed: <a href="http://www.uniprot.org/citations/27572515" target="\_blank">27572515</a>). Mediates the loading of HMGB1 in extracellular vesicles (EVs) that shuttle HMGB1 to hepatocytes by transferrin-mediated endocytosis and subsequently promote hepatocyte pyroptosis by activating the NLRP3 inflammasome (PubMed: <a href="http://www.uniprot.org/citations/34743181" target="\_blank">34743181</a>). Binds to DNA and promotes extracellular hypomethylated DNA (CpG DNA) uptake by cells via the endosomal route to activate inflammatory responses (PubMed: <a href="http://www.uniprot.org/citations/24081950" target="\_blank">24081950</a>, PubMed: <a href="http://www.uniprot.org/citations/28515150" target="\_blank">28515150</a>). Mediates phagocytosis by non-professional phagocytes (NPP) and this is enhanced by binding to ligands including RNA, DNA, HMGB1 and histones (PubMed: <a href="http://www.uniprot.org/citations/35974093" target="\_blank">35974093</a>). Promotes NPP-mediated phagocytosis of Saccharomyces cerevisiae spores by binding to RNA attached to the spore wall (PubMed: <a href="http://www.uniprot.org/citations/35974093" target="\_blank">35974093</a>). Also promotes NPP-mediated phagocytosis of apoptotic cells (PubMed: <a href="http://www.uniprot.org/citations/35974093" target="\_blank">35974093</a>). Following DNA damage, recruited to DNA double-strand break sites where it colocalizes with the MRN repair complex via interaction with double-strand break repair protein MRE11 (By similarity).

Enhances the endonuclease activity of MRE11, promoting the end resection of damaged DNA (By similarity). Promotes DNA damage repair in trophoblasts which enhances trophoblast invasion and contributes to placental development and maintenance (PubMed:<a href="http://www.uniprot.org/citations/33918759" target="\_blank">33918759</a>). Protects cells from DNA replication stress by localizing to damaged replication forks where it stabilizes the MCM2-7 complex and promotes faithful progression of the replication fork (PubMed:<a href="http://www.uniprot.org/citations/36807739" target="\_blank">36807739</a>). Mediates the production of reactive oxygen species (ROS) in human endothelial cells (PubMed:<a href="http://www.uniprot.org/citations/25401185" target="\_blank">25401185</a>).

#### **Cellular Location**

Cell membrane; Single-pass type I membrane protein. Cell projection, phagocytic cup. Early endosome. Nucleus. Note=Detected on the surface of CD11c+ peripheral blood mononuclear cells under basal conditions and after activation (PubMed:22509345). No surface expression is observed on resting T cells (PubMed:22509345). Localizes intracellularly in early endosomes in activated T cells of healthy controls and in resting T cells of patients with type I diabetes (PubMed:22509345). Nuclear translocation is enhanced by irradiation, hypoxia and reperfusion injury to brain or kidney (By similarity). Nuclear localization is enhanced by DNA damage in trophoblasts and increases in pre-term labor and preeclampsia placentas compared to control placentas (PubMed:33918759). {ECO:0000250|UniProtKB:Q62151, ECO:0000269|PubMed:22509345, ECO:0000269|PubMed:33918759} [Isoform 2]: Secreted.

#### **Tissue Location**

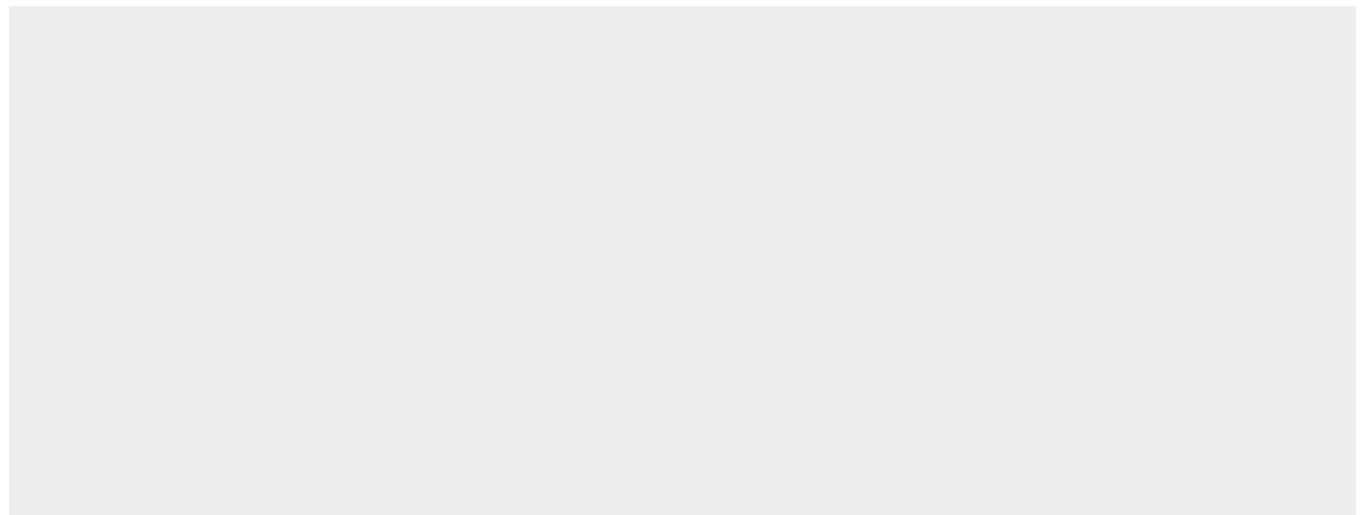
Endothelial cells. Increased expression in pre-term labor and preeclampsia placentas compared to controls (PubMed:33918759).

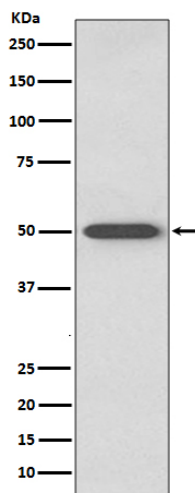
### **Anti-RAGE Rabbit Monoclonal Antibody - Protocols**

Provided below are standard protocols that you may find useful for product applications.

- [Western Blot](#)
- [Blocking Peptides](#)
- [Dot Blot](#)
- [Immunohistochemistry](#)
- [Immunofluorescence](#)
- [Immunoprecipitation](#)
- [Flow Cytometry](#)
- [Cell Culture](#)

### **Anti-RAGE Rabbit Monoclonal Antibody - Images**





Western blot analysis of RAGE expression in mouse lung lysate.